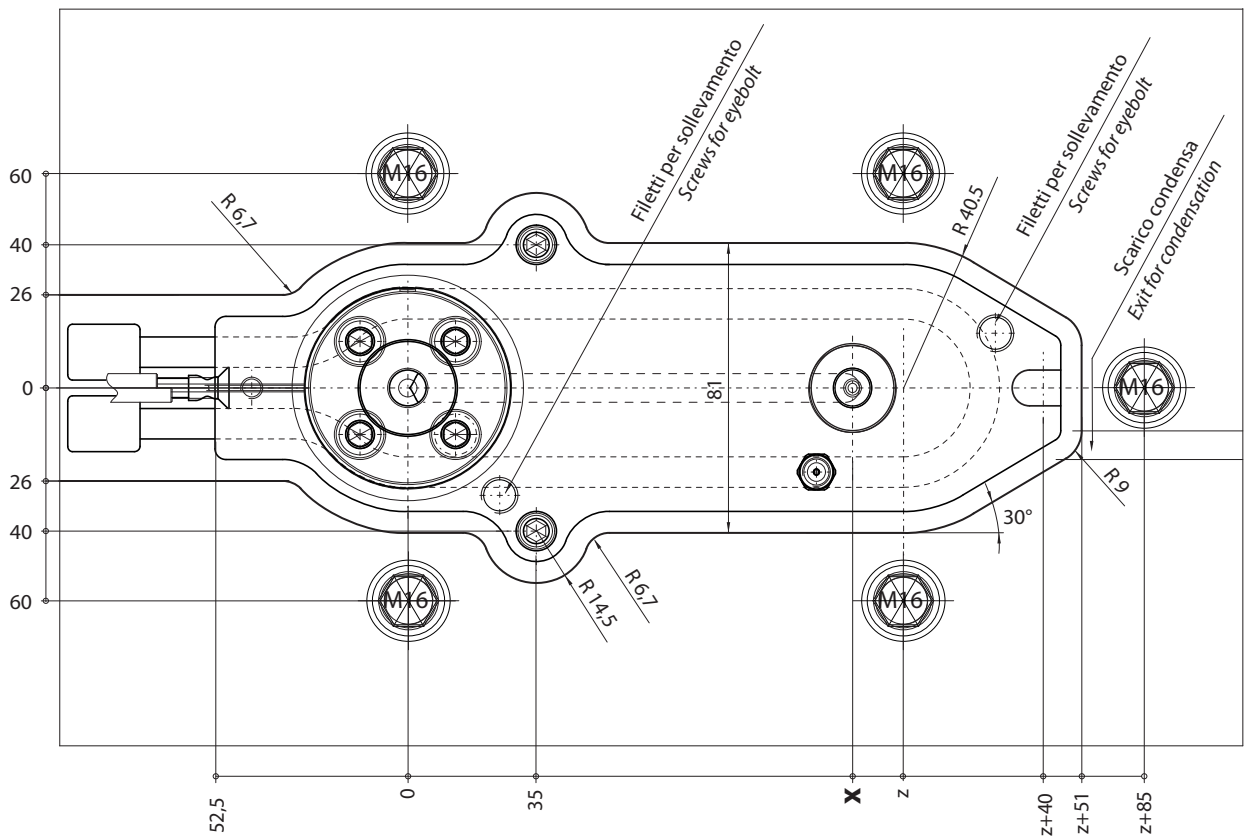
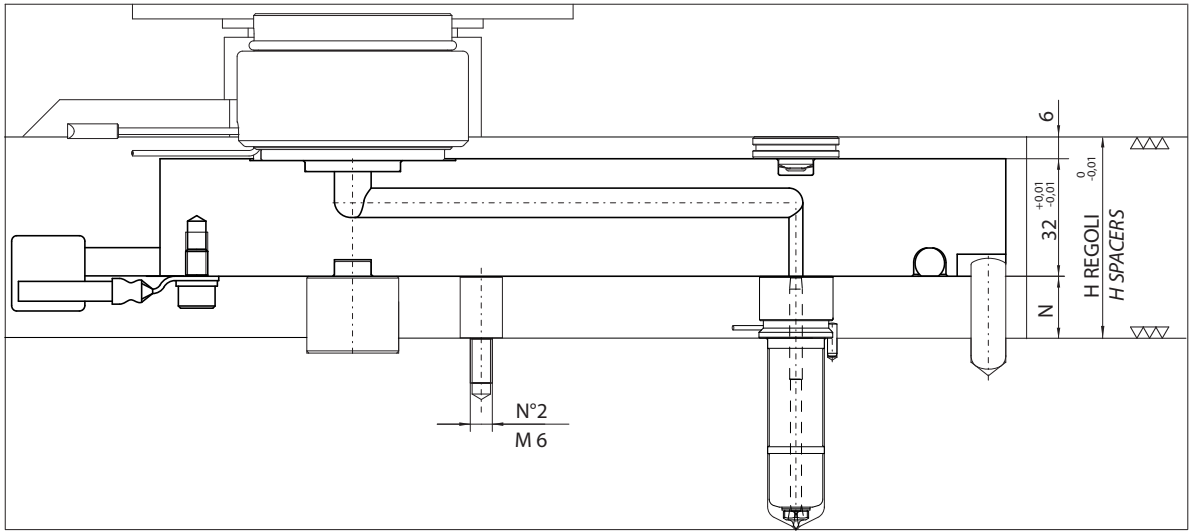


ELS SERIES (Easy Line System SERIES)

SISTEMI A CANALE CALDO CONFIGURABILI
CONFIGURABLE SYSTEM



x = relativa a posizione ugelli / quote relative to the position of nozzles

z = relativa a contorno esterno distributore / quote relative to the external shape of manifold

$$H \text{ regoli / Spacers} = (N + 32 + 6) + [(N + 32 + 6) \cdot \Delta T \cdot k] - 0.05 = \text{mm}$$

N = testa ugelli / Nozzles head

ΔT = differenza di temperatura tra camera calda e stampo / Temperature difference between the hot runner and the mould

k = coefficiente di dilatazione termica dell'acciaio / Steel thermal expansion coefficient (=0.000125)

Accedere a Webcreator per ottenere automaticamente i modelli CAD e la distinta parti
Gain access to Webcreator to automatically obtain CAD models and the part list.
<http://configurator.thermoplay.it>

Piastra Manifold			Resistenza Heater						Termocoppia Thermocouple		
Codice piastra Manifold code	Interasse Nozzle c/c	Tipo termocoppia Thermocouple type	Resistenze non corazzate Heaters not armored			Resistenze corazzate Armored heaters			a massa grounded	isolata ungrounded	Q.tà Q.ty
			Codice / Code	Potenza* Power* [W]	Q.tà Q.ty	Codice / Code	Potenza* Power* [W]	Q.tà Q.ty			
E90311	50 < x ≤ 60	JG / JU	TS056	1300	1	TS056	1300	E06145	E16058	1	
E90312	60 < x ≤ 70		TS001	1200		TS001	1200				
E90313	70 < x ≤ 80		TS002	1200		TS002	1200				
E90314	80 < x ≤ 90		TS076	800		TS052	1300				
E90315	90 < x ≤ 100		TS077	800		TS045	1400				
E90316	100 < x ≤ 110		TS078	900		TS004	1800				
E90317	110 < x ≤ 120		TS079	900		TS058	1900				
E90318	120 < x ≤ 130		TS003	1300		TS003	1300				
E90319	130 < x ≤ 140		TS080	1000		TS047	1500				
E90320	140 < x ≤ 150		TS081	1000		TS059	2100				
E90321	150 < x ≤ 160		TS082	1100		TS007	2400				
E90322	160 < x ≤ 170		TS083	1100		TS060	2200				
E90323	170 < x ≤ 180		TS084	1200		TS008	2400				
E90324	180 < x ≤ 190		TS085	1200		TS046	2200				
E90325	190 < x ≤ 200		TS086	1400		TS146	2000				
E90326	200 < x ≤ 210		TS087	1500		TS146	2000				
E90327	210 < x ≤ 220		TS088	1600		TS011	2700				
E90328	220 < x ≤ 230		TS089	1600		TS050	2500				
E90329	230 < x ≤ 240		TS090	1700		TS012	2500				
E90330	240 < x ≤ 250		TS091	1700		TS062	2500				
E90331	250 < x ≤ 260		TS092	1800		TS063	2700				
E90332	260 < x ≤ 270		TS093	1800		TS014	3300				
E90333	270 < x ≤ 280		TS094	1800		TS174	2400				
E90334	280 < x ≤ 290		TS095	1900		TS016	3200				
E90335	290 < x ≤ 300		TS096	2100		TS065	3100				
E90336	300 < x ≤ 310		TS097	2000		TS017	3100				
E90337	310 < x ≤ 320		TS098	2200		TS018	3300				
E90338	320 < x ≤ 330		TS099	2100		TS066	3200				
E90339	330 < x ≤ 340		TS100	2300		TS019	3200				
E90340	340 < x ≤ 350		TS101	2200		TS067	3200				
E90341	350 < x ≤ 360		TS102	2200		TS020	3200				
E90342	360 < x ≤ 370		TS103	2400		TS021	3200				
E90343	370 < x ≤ 380		TS104	2500		TS069	3300				
E90344	380 < x ≤ 390		TS105	2700		TS115	2900				
E90345	390 < x ≤ 400		TS106	3000		TS023	3200				
E90346	400 < x ≤ 410	TS107	3100	TS024	3300						
E90347	410 < x ≤ 420	TS108	3200	TS108	3200						
E90348	420 < x ≤ 430	TS109	2600	TS025	3300						
E90349	430 < x ≤ 440	TS110	2600	TS026	3400						
E90350	440 < x ≤ 450	TS111	2600	TS175	3400						

JG= Termocoppie tipo J a massa / Grounded thermocouples J type.

JU =Termocoppie tipo J isolate / Ungrounded thermocouples J type.

* Potenza nominale riferita ad ogni singolo elemento riscaldante / Nominal power referred to each single heater

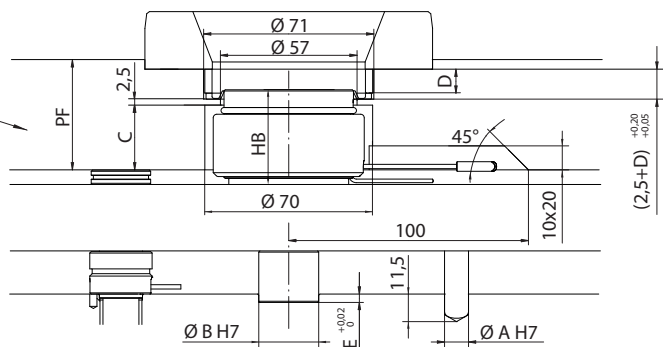
ATTENZIONE: in funzione della temperatura di processo del polimero utilizzato, Webcreator consiglia la tipologia di piastra di distribuzione idonea (con o senza resistenze corazzate).

WARNING: according to the process temperature of the injected polymer, webcreator advice the suitable kind of manifold (with or without armored heaters).

Piastra in acciaio bonificato 110 kg/mm²
in alternativa acciaio temprato HRC 42-46
Heat treatable steel plate 110 kg/mm²
in alternative hardened steel HRC 42-46

Per le quote non specificate consultare il catalogo Thermoplay nella sezione accessori.
For dimensions not specified consult Thermoplay catalogue in accessories section.

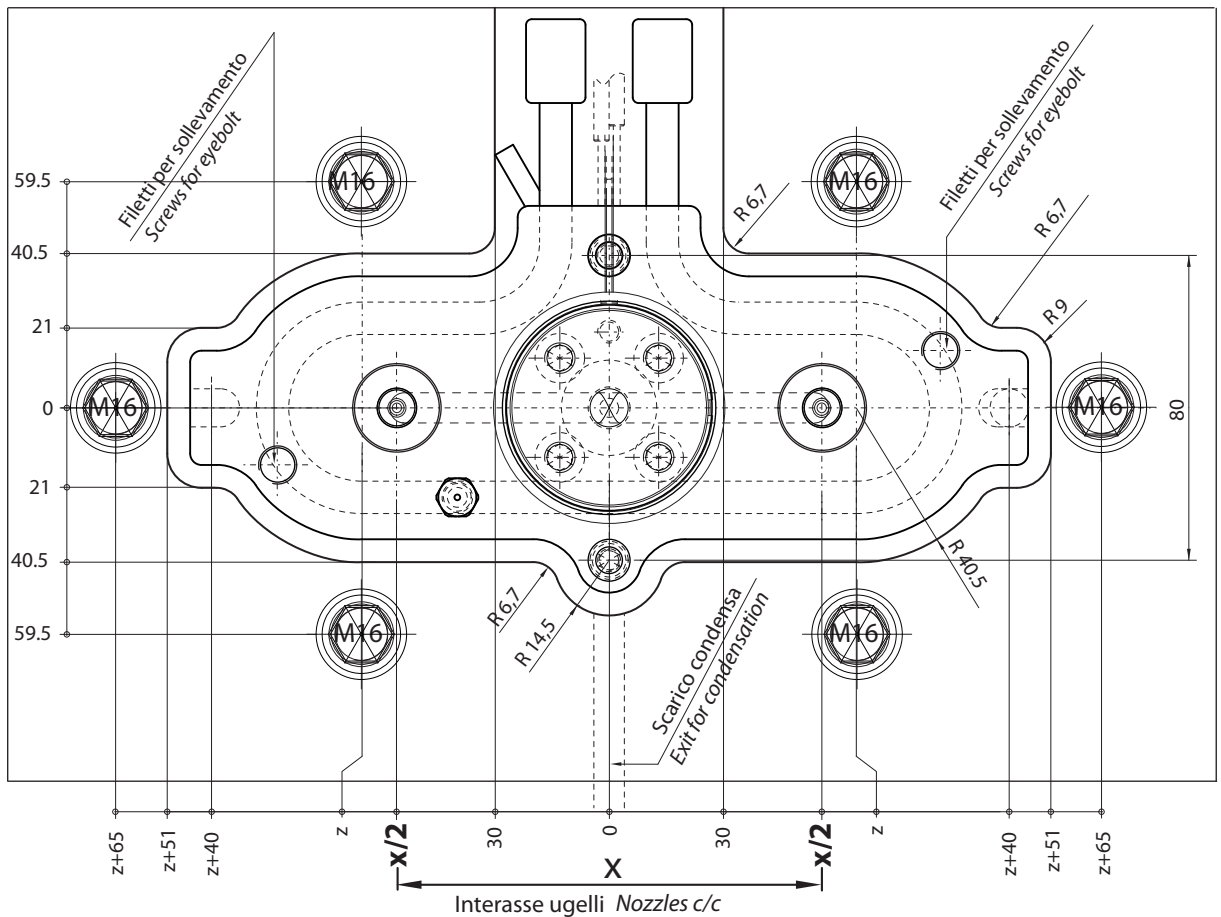
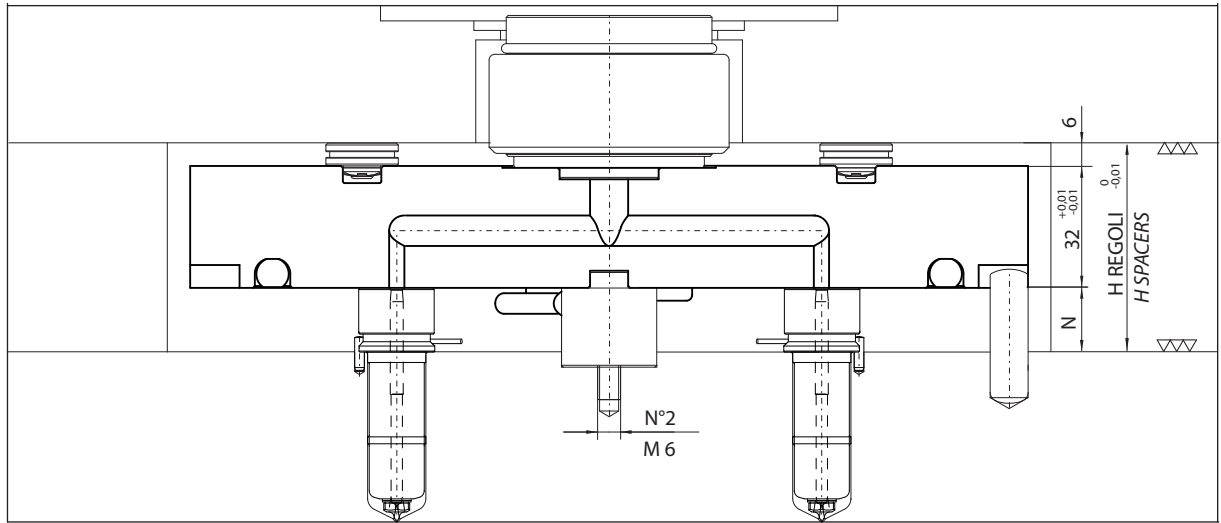
HB	C	PF
22	11	18 + D
40	27	36 + D
46	27	36 + D
60	47	56 + D
84	71	80 + D



Per ulteriori informazioni consultare il Servizio Tecnico Thermoplay - Further information have to be required to Thermoplay's Technical Support

ELS SERIES (Easy Line System SERIES)

SISTEMI A CANALE CALDO CONFIGURABILI
CONFIGURABLE SYSTEM



x = relativa a posizione ugelli / quote relative to the position of nozzles

z = relativa a contorno esterno distributore / quote relative to the external shape of manifold

$$H \text{ regoli / Spacers} = (N + 32 + 6) + [(N + 32 + 6) \cdot \Delta T \cdot k] - 0.05 = \text{mm}$$

N = testa ugelli / nozzles head

ΔT = differenza di temperatura tra camera calda e stampo

Temperature difference between the hot runner and the mould

k = coefficiente di dilatazione termica dell'acciaio / Steel thermal expansion coefficient (=0.0000125)

Accedere a Webcreator per ottenere automaticamente i modelli CAD e la distinta parti
Gain access to Webcreator to automatically obtain CAD models and the part list.
<http://configurator.thermoplay.it>

Piastra Manifold				Resistenza Heater						Termocoppia Thermocouple		
Codice piastra * Manifold code *	Interasse Nozzle c/c	Tipo termocoppia Thermocouple type	z	Resistenze non corazzate Heaters not armored			Resistenze corazzate Armored heaters			a massa grounded	isolata ungrounded	Q.tà Q.ty
				Codice / Code	Potenza** Power [W]	Q.tà Q.ty	Codice / Code	Potenza** Power [W]	Q.tà Q.ty			
E90100	90 < x ≤ 100	JG / JU	50	TS076	800	1	TS052	1300	1	E06145	1	
E90101	100 < x ≤ 110		55	TS077	800		TS045	1400				
E90102	110 < x ≤ 120		60	TS078	900		TS057	1600				
E90103	120 < x ≤ 130		65	TS079	900		TS058	1900				
E90108	130 < x ≤ 140		70	TS112	900		TS005	2300				
E90112	140 < x ≤ 150		75	TS080	1000		TS047	1500				
E90116	150 < x ≤ 160		80	TS081	1000		TS059	2100				
E90117	160 < x ≤ 170		85	TS082	1100		TS007	2400				
E90121	170 < x ≤ 180		90	TS083	1100		TS060	2200				
E90298	180 < x ≤ 190		95	TS084	1200		TS008	2400				
E90125	190 < x ≤ 200		100	TS085	1200		TS046	2200				
E90299	200 < x ≤ 210		105	TS086	1400		TS009	2400				
E90129	210 < x ≤ 220		110	TS087	1500		TS146	2000				
E90300	220 < x ≤ 230		115	TS113	1600		TS061	2400				
E90133	230 < x ≤ 240		120	TS089	1600		TS011	2700				
E90141	240 < x ≤ 250		125	TS090	1700		TS012	2500				
E90145	250 < x ≤ 260		130	TS091	1700		TS062	2500				
E90297	260 < x ≤ 270		135	TS092	1800		TS063	2700				
E90149	270 < x ≤ 280		140	TS093	1800		TS014	3300				
E90301	280 < x ≤ 290		145	TS094	1800		TS174	2200				
E90120	290 < x ≤ 300		150	TS095	1900		TS015	3100				
E90302	300 < x ≤ 310		155	TS096	2100		TS016	3200				
E90157	310 < x ≤ 320		160	TS097	2000		TS065	3100				
E90303	320 < x ≤ 330		165	TS098	2200		TS017	3100				
E90161	330 < x ≤ 340		170	TS099	2100		TS018	3300				
E90165	340 < x ≤ 350		175	TS114	2200		TS176	3000				
E90169	350 < x ≤ 360		180	TS101	2200		TS067	3200				
E90304	360 < x ≤ 370		185	TS102	2200		TS020	3200				
E90173	370 < x ≤ 380		190	TS103	2400		TS068	3300				
E90351	380 < x ≤ 390		195	TS021	3200		TS021	3200				
E90177	390 < x ≤ 400	200	TS115	2900	TS022	3200						
E90352	400 < x ≤ 410	205	TS106	3000	TS070	3200						
E90353	410 < x ≤ 420	210	TS023	3200	TS023	3200						
E90354	420 < x ≤ 430	215	TS107	3100	TS024	3300						
E90355	430 < x ≤ 440	220	TS116	2600	TS071	3300						
E90181	440 < x ≤ 450	225	TS109	2600	TS025	3300						
E90356	450 < x ≤ 460	230	TS118	3000	TS175	3400						
E90357	460 < x ≤ 470	235	TS027	3300	TS177	3500						
E90358	470 < x ≤ 480	240	TS119	3400	TS119	3400						
E90359	480 < x ≤ 490	245	TS028	3300	TS140	3500						
E90150	490 < x ≤ 500	250	TS029	3300	TS029	3300						

* Non valido come codice d'ordine/ Not valid code for order

JG= Termocoppie tipo J a massa / Grounded thermocouples J type.

JU =Termocoppie tipo J isolate / Ungrounded thermocouples J type.

** Potenza nominale riferita ad ogni singolo elemento riscaldante / Nominal power referred to each single heater

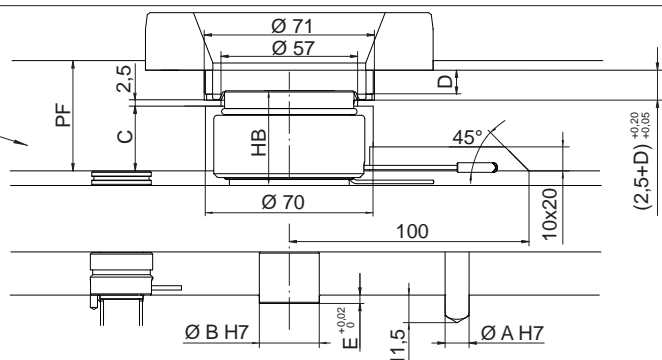
ATTENZIONE: in funzione della temperatura di processo del polimero utilizzato, Webcreator consiglia la tipologia di piastra di distribuzione idonea (con o senza resistenze corazzate).

WARNING: according to the process temperature of the injected polymer, webcreator advice the suitable kind of manifold (with or without armored heaters).

Piastra in acciaio bonificato 110 kg/mm²
in alternativa acciaio temprato HRC 42-46
Heat treatable steel plate 110 kg/mm²
in alternative hardened steel HRC 42-46

Per le quote non specificate consultare il catalogo Thermoplay nella sezione accessori.
For dimensions not specified consult Thermoplay catalogue in accessories section.

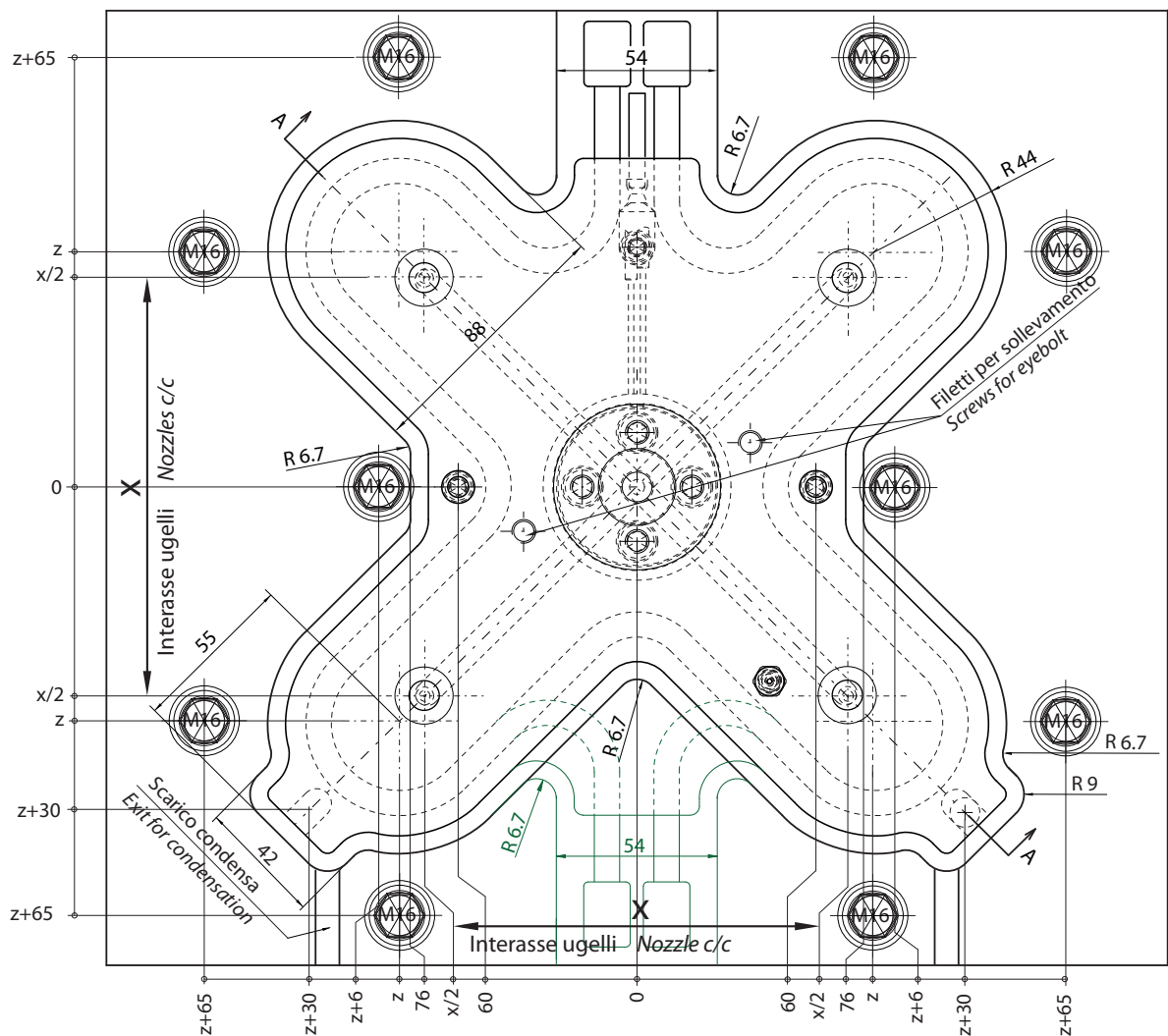
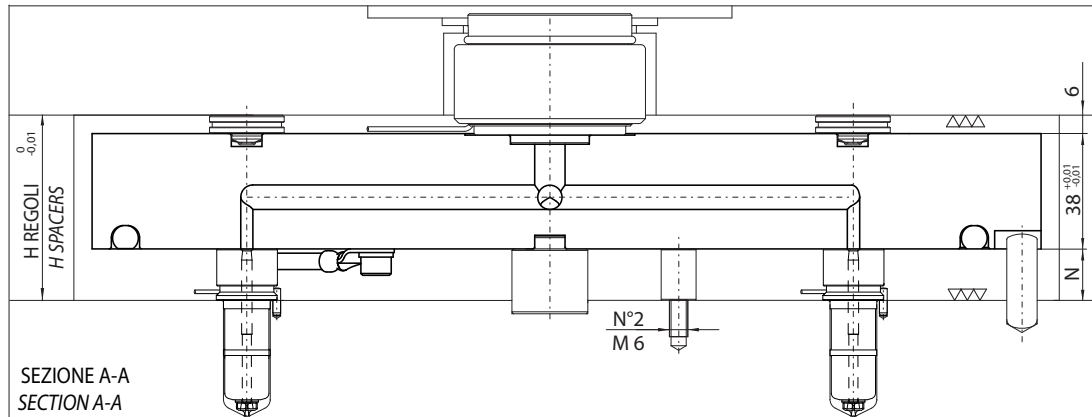
HB	C	PF
22	11	18 + D
40	27	36 + D
46	27	36 + D
60	47	56 + D
84	71	80 + D



Per ulteriori informazioni consultare il Servizio Tecnico Thermoplay - Further information have to be required to Thermoplay's Technical Support

ELS SERIES (Easy Line System SERIES)

SISTEMI A CANALE CALDO CONFIGURABILI
CONFIGURABLE SYSTEM



x = relativa a posizione ugelli / quote relative to the position of nozzles

z = relativa a contorno esterno distributore / quote relative to the external shape of manifold

$$H \text{ regoli / Spacers} = (N + 38 + 6) + [(N + 38 + 6) \cdot \Delta T \cdot k] - 0.05 = \text{mm}$$

N = testa ugelli / nozzles head

ΔT = differenza di temperatura tra camera calda e stampo

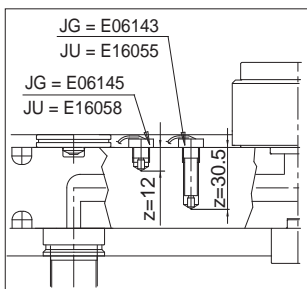
Temperature difference between the hot runner and the mould

k = coefficiente di dilatazione termica dell'acciaio / Steel thermal expansion coefficient (=0.0000125)

Accedere a Webcreator per ottenere automaticamente i modelli CAD e la distinta parti
 Gain access to Webcreator to automatically obtain CAD models and the part list.
<http://configurator.thermoplay.it>

Piastra / Manifold					Resistenze non corazzate Heaters not armored						Resistenze corazzate Armored heaters									
Codice piastra * Manifold code *	Interasse Nozzle c/c	Tipo / Type Termocoppia Thermocouple	Disegno / Drawing	z	Resistenza Heater			Termocoppia Thermoelement			Resistenza Heater			Termocoppia Thermoelement						
					Codice Code	Potenza** Power [W]	Q.tà Qty	a massa grounded	isolata ungrounded	Q.tà Qty	Codice Code	Potenza** Power [W]	Q.tà Qty	a massa grounded	isolata ungrounded	Q.tà Qty				
E90188	90 < x ≤ 100	JG / JU	A	50	TS120	2200	1	E06143	E16055	1	TS090	1700	2	E06143 - E06145	E16055 - E16058	1+1				
E90305	100 < x ≤ 110																TS121	2300	TS092	1800
E90192	110 < x ≤ 120																TS122	2500	TS179	2000
E90105	120 < x ≤ 130																TS123	2700	TS098	2200
E90199	130 < x ≤ 140																TS124	2800	TS101	2200
E90203	140 < x ≤ 150																TS125	3000	TS103	2400
E90207	150 < x ≤ 160																TS023	3200	TS023	3200
E90306	160 < x ≤ 170																TS126	1800	TS126	1800
E90211	170 < x ≤ 180																TS046	2200	TS046	2200
E90307	180 < x ≤ 190																TS127	1900	TS086	1400
E90215	190 < x ≤ 200																TS128	2000	TS113	1600
E90308	200 < x ≤ 210																TS129	2100	TS089	1600
E90219	210 < x ≤ 220																TS012	2500	TS012	2500
E90309	220 < x ≤ 230																TS121	2300	TS092	1800
E90223	230 < x ≤ 240																TS130	2300	TS093	1800
E90227	240 < x ≤ 250																TS131	2400	TS179	2000
E90231	250 < x ≤ 260																TS132	2500	TS096	2100
E90310	260 < x ≤ 270																TS133	2600	TS181	2200
E90235	270 < x ≤ 280																TS134	2600	TS099	2100
E90360	280 < x ≤ 290																TS135	2600	TS100	2300
E90239	290 < x ≤ 300																TS136	2600	TS102	2200
E90361	300 < x ≤ 310																TS021	3200	TS103	2400
E90243	310 < x ≤ 320	TS115	2900	TS115	2900															
E90362	320 < x ≤ 330	TS106	3000	TS106	3000															
E90247	330 < x ≤ 340	TS107	3100	TS107	3100															
E90251	340 < x ≤ 350	TS137	3000	TS071	3300															
E90255	350 < x ≤ 360	TS138	3000	TS026	3400															
E90363	360 < x ≤ 370	TS139	3000	TS175	3400															
E90259	370 < x ≤ 380	TS119	3400	TS119	3400															
E90364	380 < x ≤ 390	TS140	3500	TS140	3500															
E90134	390 < x ≤ 400	TS072	3300	TS072	3300															
E90365	400 < x ≤ 410	TS141	3500	TS141	3500															
E90366	410 < x ≤ 420	TS142	3500	TS178	2400															
E90367	420 < x ≤ 430	TS143	3500	TS049	2600															
E90368	430 < x ≤ 440	TS144	3500	TS073	3200															
E90266	440 < x ≤ 450	TS145	3500	TS074	3200															

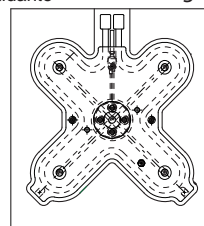
* Non valido come codice d'ordine / Not valid code for order



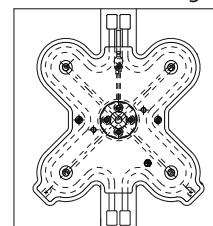
JG = Termocoppie tipo J a massa / Grounded thermocouples J type
 JU = Termocoppie tipo J isolate / Ungrounded thermocouples J type
 ** Potenza nominale riferita ad ogni singolo elemento riscaldante
 ** Nominal power referred to each single heater

ATTENZIONE: in funzione della temperatura di processo del polimero utilizzato, Webcreator consiglia la tipologia di piastra di distribuzione idonea (con o senza resistenze corazzate).
WARNING: according to the process temperature of the injected polymer, Webcreator will advise the suitable kind of manifold (with or without armored heaters).

Disegno A
Drawing A

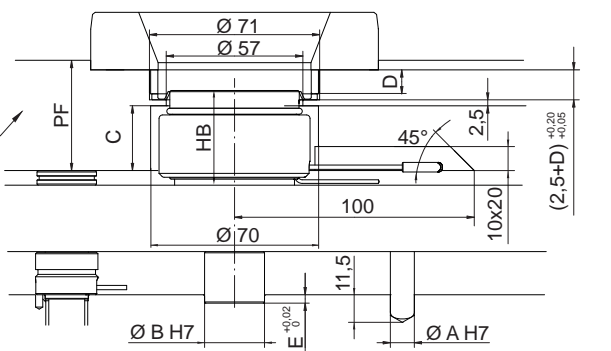


Disegno B
Drawing B



HB	C	PF
22	11	18 + D
40	27	36 + D
46	27	36 + D
60	47	56 + D
84	71	80 + D

Piastra in acciaio bonificato 110 kg/mm²
 in alternativa acciaio temprato HRc 42-46
 Heat treatable steel plate 110 kg/mm²
 in alternative hardened steel HRc 42-46



Per le quote non specificate consultare il catalogo Thermoplay nella sezione accessori.

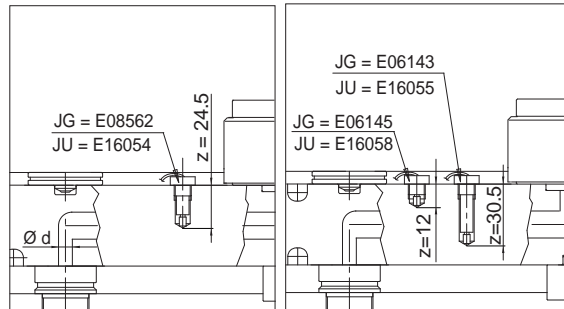
For dimensions not specified consult Thermoplay catalogue in accessories section.

Per ulteriori informazioni consultare il Servizio Tecnico Thermoplay - Further information have to be required to Thermoplay's Technical Support

Accedere a Webcreator per ottenere automaticamente i modelli CAD e la distinta parti
Gain access to Webcreator to automatically obtain CAD models and the part list.
<http://configurator.thermoplay.it>

Codice piastra Manifold code	Interasse Nozzle c/c		T	N	S	G	V	W	R
	x	y							
E90270	300	150	224	185	140	75	25	81	40.5
E90135	400	200	251	211	160	100	25	81	40.5
E90277	500	250	287	248	200	125	30	99	49.5
E90281	600	300	314	274	220	150	30	99	49.5

Tipo ugello Nozzle type	Ø d	suffisso suffix	Piastra disponibile Available manifold
DN Ø18	Ø 4	- 40	E90270 - E90135
K55-8 Ø22 F Ø16 - 24 DN Ø22	Ø 6	- 60	E90270 - E90135
K55-8 Ø30 DN Ø30	Ø 8	- 80	E90270 - E90135 E90277 - E90281
F Ø32 DN Ø44	Ø 11	- 11	E90277 - E90281
K55-8 Ø44	Ø12.7	- 127	E90277 - E90281



ESEMPIO D'ORDINE - EXAMPLE FOR ORDER: **E90135** - **40** - **JU**

① Codice piastra Manifold code ② Suffisso tipo ugello Nozzle type suffix ③ Termocoppie Thermocouples

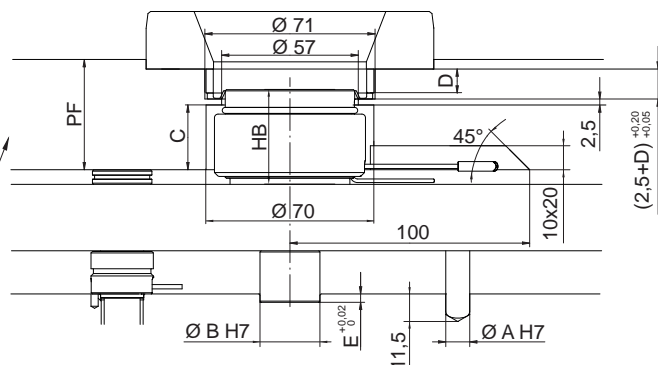
RICAMBI - SPARE PARTS						
Codice piastra Manifold code	Resistenze - Heaters			Termocoppie - Thermocouples ③		
	Codice resistenza Heater code	Potenza* Power * [W]	Q.tà Q.ty	a massa - grounded JG	isolata - ungrounded JU	Q.tà Q.ty
E90270	TS174	2200	2	E08562	E16054	2
E90135	TS115	2900	2			
E90277	TS180	2200	4	E06143	E16055	2+2
E90281	TS117	2600	4	E06145	E16058	

* Potenza nominale riferita ad ogni singolo elemento riscaldante
* Nominal power referred to each single heater
JG= Termocoppie tipo J a massa / Grounded thermocouples J type.
JU = Termocoppie tipo J isolate / Ungrounded thermocouples J type.

HB	C	PF
22	11	18 + D
40	27	36 + D
46	27	36 + D
60	47	56 + D
84	71	80 + D

Piastra in acciaio bonificato 110 kg/mm²
in alternativa acciaio temprato HRC 42-46
Heat treatable steel plate 110 kg/mm²
in alternative hardened steel HRC 42-46

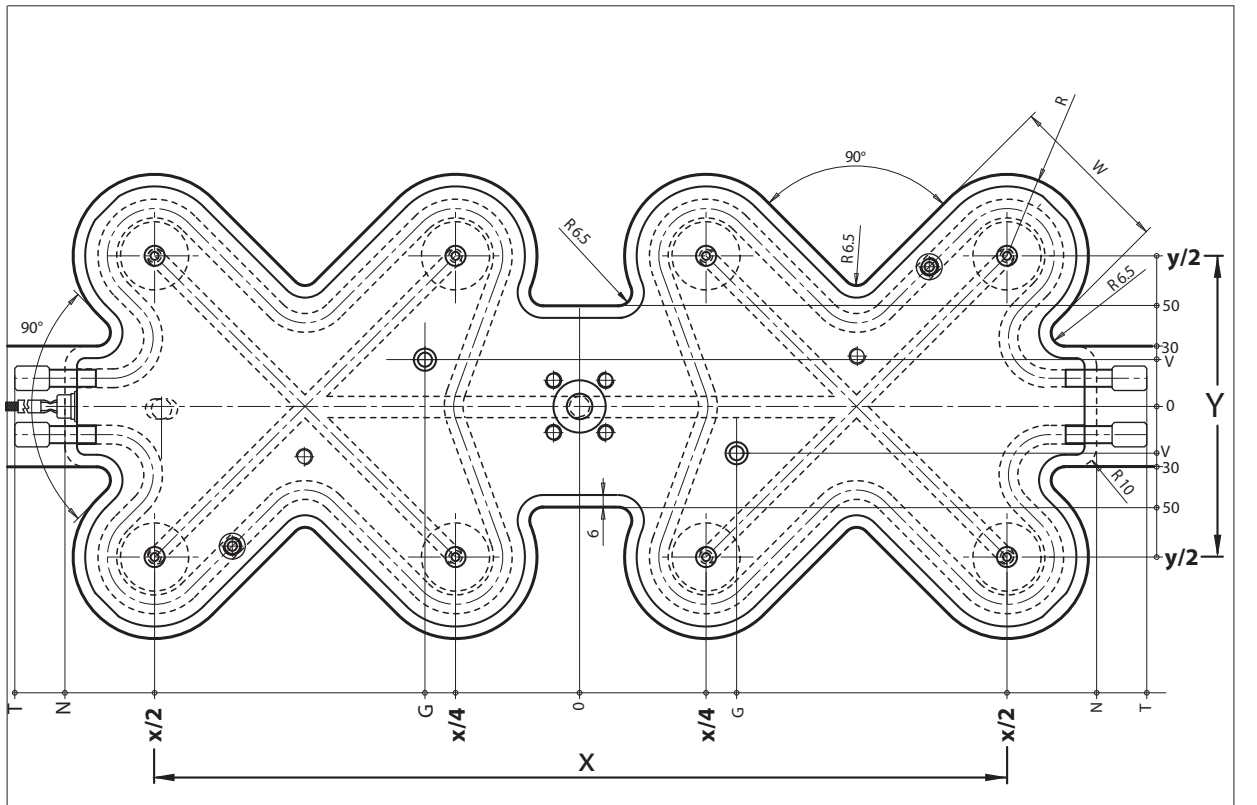
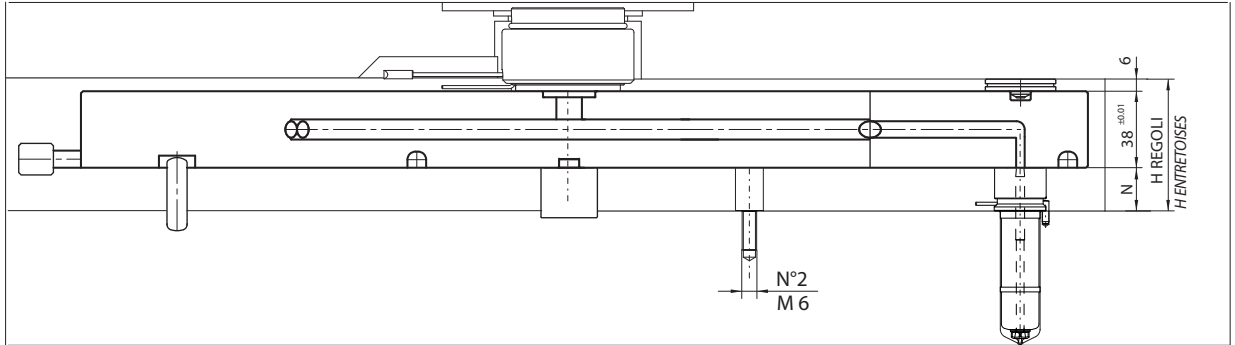
Per le quote non specificate consultare il catalogo Thermoplay nella sezione accessori.
For dimension not specified consult Thermoplay catalogue in accessories section.



Per ulteriori informazioni consultare il Servizio Tecnico Thermoplay - Further information have to be required to Thermoplay's Technical Support

ELS SERIES (Easy Line System SERIES)

SISTEMI A CANALE CALDO CONFIGURABILI
CONFIGURABLE SYSTEM



$$H \text{ regoli / Spacers} = (N + 38 + 6) + [(N + 38 + 6) \cdot \Delta T \cdot k] - 0.05 = \text{mm}$$

N = testa ugelli / nozzles head

ΔT = differenza di temperatura tra camera calda e stampo

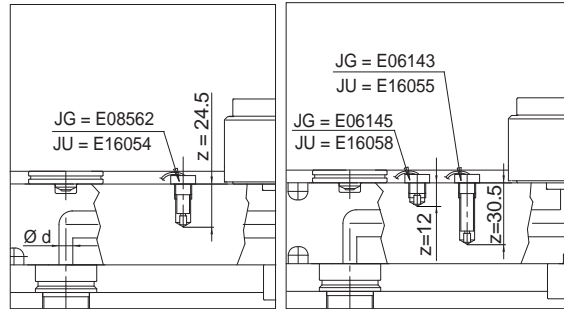
Temperature difference between the hot runner and the mould

k = coefficiente di dilatazione termica dell'acciaio / Steel thermal expansion coefficient (=0.000125)

Accedere a Webcreator per ottenere automaticamente i modelli CAD e la distinta parti
Gain access to Webcreator to automatically obtain CAD models and the part list.
<http://configurator.thermoplay.it>

Codice piastra Manifold code	Interasse Nozzle c/c		T	N	S	G	V	W	R
	x	y							
E90285	300	100	244	205	150	60	20	81	40.5
E90136	450	150	300	261	220	90	30	81	40.5
E90292	600	200	363	323	270	110	50	99	49.5
E90296	750	250	412	373	320	160	50	99	49.5

Tipo ugello Nozzle type	Ø d	suffisso ② suffix	Piastra disponibile Available manifold
DN Ø18	Ø 4	- 40	E90285 - E90136
KS5-8 Ø22 F Ø16 - 24 DN Ø22	Ø 6	- 60	E90285 - E90136
KS5-8 Ø30 DN Ø30	Ø 8	- 80	E90285 - E90136 E90292 - E90296
F Ø32 DN Ø44	Ø 11	- 11	E90292 - E90296
KS5-8 Ø44	Ø12.7	- 127	E90292 - E90296



ESEMPIO D'ORDINE - EXAMPLE OF ORDER: **E90136** - **40** - **JU**

① Codice piastra - Manifold code ② Suffisso tipo ugello - Nozzle type suffix ③ Termocoppie - Thermoement

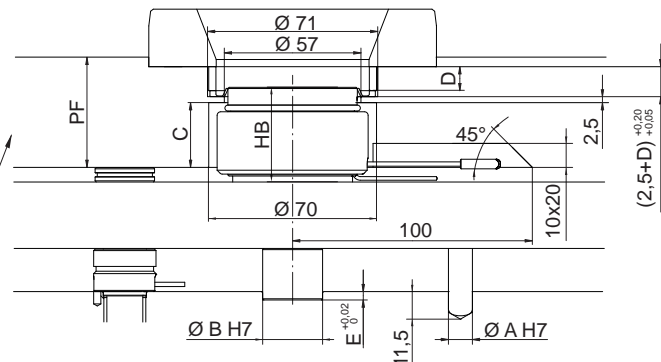
RICAMBI - SPARE PARTS						
Codice piastra Manifold code	Resistenze - Heaters			Termocoppie - Thermoement ③		
	Codice resistenza Heater code	Potenza* Power* [W]	Q.tà Q.ty	a massa - grounded JG	isolata - ungrounded JU	Q.tà Q.ty
E90285	TS146	2000	2	E08562	E16054	2
E90136	TS176	3000	2			
E90292	TS142	2400	4	E06143	E16055	2+2
E90296	TS182	3000	4	E06145	E16058	

* Potenza nominale riferita ad ogni singolo elemento riscaldante
* Nominal power referred to each single heater
JG= Termocoppie tipo J a massa / Grounded thermocouples J type.
JU =Termocoppie tipo J isolate / Ungrounded thermocouples J type.

HB	C	PF
22	11	18+ D
40	27	36 + D
46	27	36 + D
60	47	56 + D
84	71	80 + D

Piastra in acciaio bonificato 110 kg/mm²
in alternativa acciaio temprato HRc 42-46
Heat treatable steel plate 110 kg/mm²
in alternative hardened steel HRc 42-46

Per le quote non specificate consultare il catalogo Thermoplay nella sezione accessori.
For dimensions not specified consult Thermoplay catalogue in accessories section.



Per ulteriori informazioni consultare il Servizio Tecnico Thermoplay - Further information have to be required to Thermoplay's Technical Support