

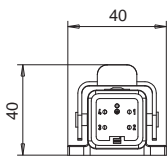
Composed by: cover, receptacle and strain relief.

由罩子、容器以及溢放口组成

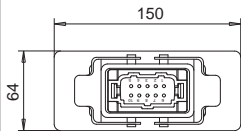
Diagram of connectors assemblies composed by: cover, box and receptacle.

接头组件图 (含: 罩子、箱体和底座)

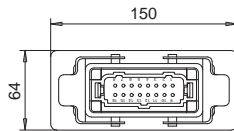
N. plug 插头数量	Q.ty poles 杆数	code 代码
n° 1	4 Male poles 4根 阳极杆	E16833



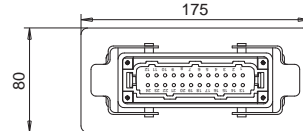
N. plug 插头数量	Q.ty poles 杆数	code 代码
n° 1	10 female poles 10根 阴极杆	E15761
n° 1	10 Male poles 10根 阳极杆	E05128



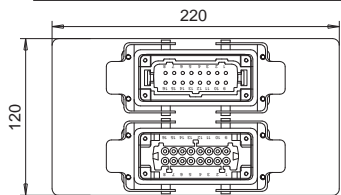
N. plug 插头数量	Q.ty poles 杆数	code 代码
n° 1	16 female poles 16根 阴极杆	E09509
n° 1	16 Male poles 16根 阳极杆	E05129



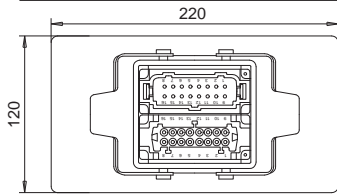
N. plug 插头数量	Q.ty poles 杆数	code 代码
n° 1	24 female poles 24根 阴极杆	E09510
n° 1	24 Male poles 24根 阳极杆	E05131



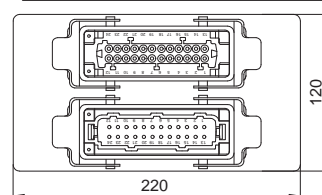
N. plug 插头数量	Q.ty poles 杆数	code 代码
n° 1	16 female poles 16根 阴极杆	E08102
n° 1	16 Male poles 16根 阳极杆	



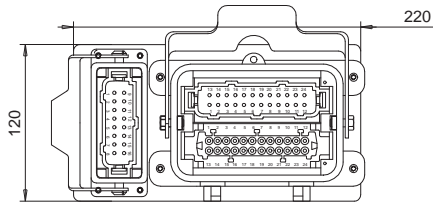
N. plug 插头数量	Q.ty poles 杆数	code 代码
n° 1	16 female poles 16根 阴极杆 + 16 Male poles 16根 阳极杆	E05134



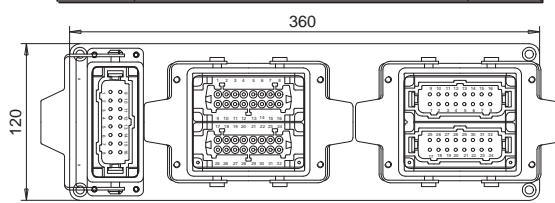
N. plug 插头数量	Q.ty poles 杆数	code 代码
n° 1	24 female poles 24根 阴极杆	E05137
n° 1	24 Male poles 24根 阳极杆	



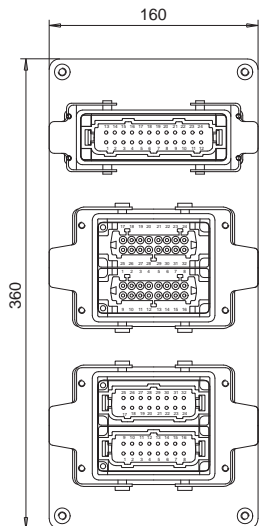
N. plug 插头数量	Q.ty poles / 杆数	code 代码
n° 1	24 female poles 16根 阴极杆 + 24 Male poles 16根 阳极杆	E05140
n° 1	16 Male poles 16根 阳极杆	



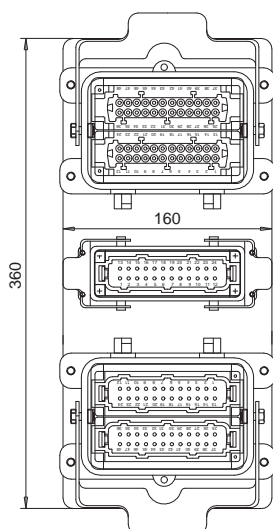
N. plug 插头数量	Q.ty poles / 杆数	code 代码
n° 1	32 female poles 32根 阴极杆	E05143
n° 1	32 Male poles 32根 阳极杆	
n° 1	16 Male poles 16根 阴极杆	



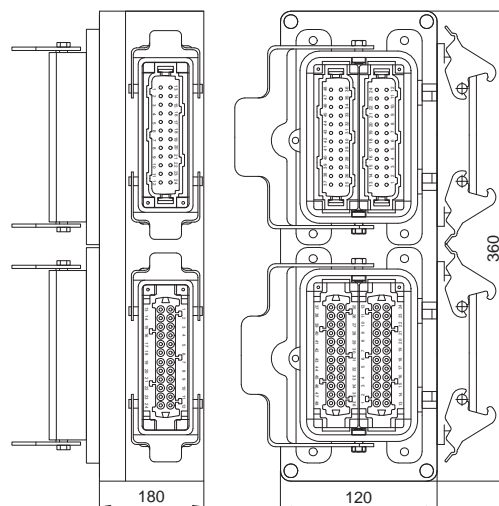
N. plug 插头数量	Q.ty poles 杆数	code 代码
n° 1	32 Male poles 32根 阳极杆	E05145
n° 1	32 female poles 32根 阴极杆	
n° 1	24 Male poles 24根 阳极杆	



N. plug 插头数量	Q.ty poles 杆数	code 代码
n° 1	48 Male poles 48根 阳极杆	E05148
n° 1	48 female poles 48根 阴极杆	
n° 1	24 Male poles 24根 阳极杆	



N. plug 插头数量	Q.ty poles 杆数	code 代码
n° 1	48 Male poles 48根 阳极杆	E05150
n° 1	48 female poles 48根 阴极杆	
n° 1	24 Male poles 24根 阳极杆	
n° 1	24 female poles 24根 阴极杆	



Q.ty/杆数	code / 代码	E05151
n°2	32 Female poles 32 根阴极杆	
n°2	32 Male poles 32 根阳极杆	
n°1	24 Female poles 24 根阴极杆	
n°1	24 Male poles 24 根阳极杆	

Q.ty/杆数	code / 代码	E05152
n°2	48 female poles 48 根阴极杆	
n°2	48 male poles 48 根阳极杆	

Q.ty/杆数	code / 代码	E05155
n°2	48 Male poles 48 根阳极杆	
n°2	48 Female poles 48 根阴极杆	
n°1	24 Male poles 24 根阳极杆	
n°1	24 Female poles 24 根阴极杆	

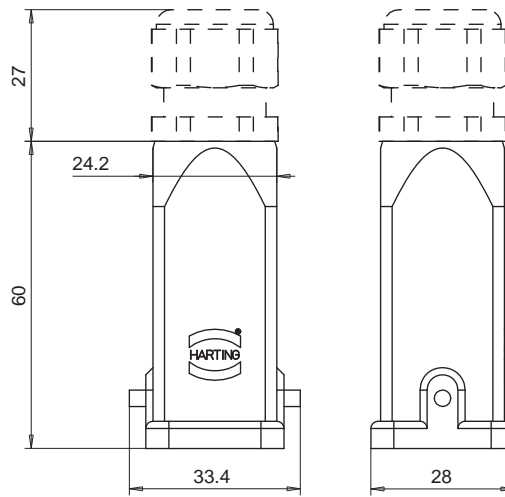
ELECTRICAL CONNECTOR
4 poles - 240V - 10A

导电体
4 极 240V 10A

Cables
min. 6
max. 12
电缆
最小 6
最大 12

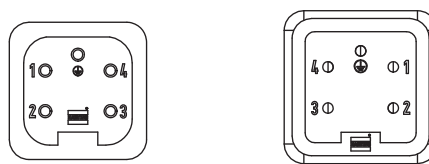
HOOD / 罩子

code / 代码 E16188



RECEPTACLE / 容器

code / 代码 E11160



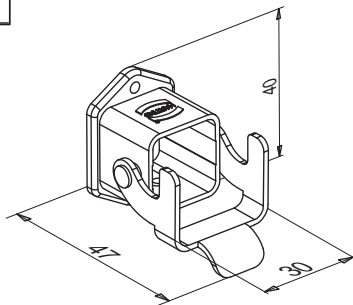
PLUG / 插头

code / 代码 E16186

BASE / 底座

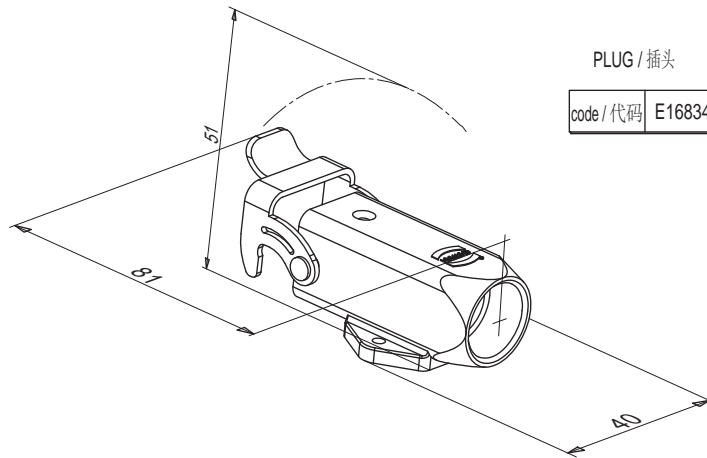
BASE / 底座

code / 代码 E11161



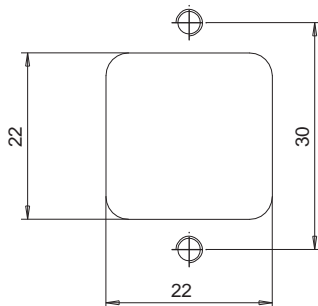
PLUG / 插头

code / 代码 E16834



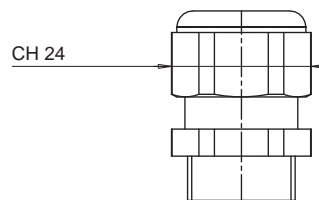
Layout to attach base to mold
模具底座安装图

To mount base use n 2 screws M3x10 UNI 5931
使用2个M3x10 UNI5931螺丝安装底座



STRAIN RELIEF FITTING / 减压设备

code / 代码 E16187



Cable
min. 6
max. 12
电缆
最小 6
最大 12

ELECTRICAL CONNECTOR
6 poles - 240V - 35A

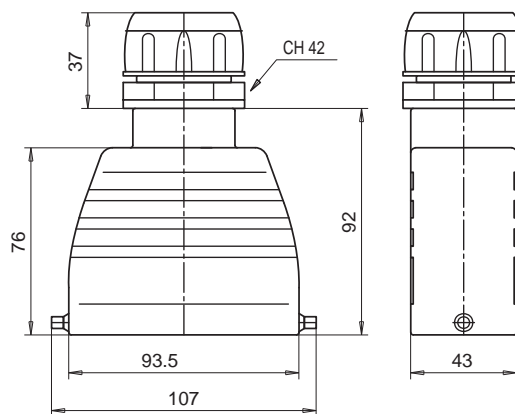
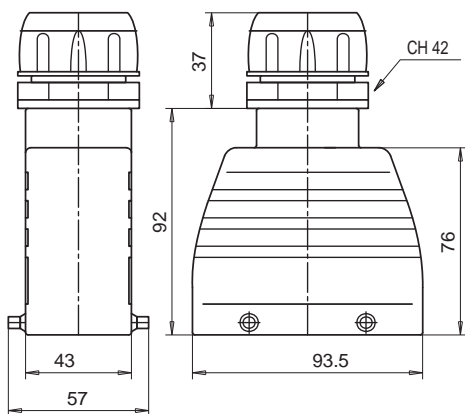
导电体
6极 240V 35A

Cables
min. 19
max. 29
电缆
最小 19
最大 29

code / 代码 E04238

HOOD / 罩子

code / 代码 E04239

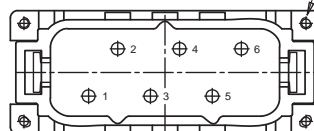
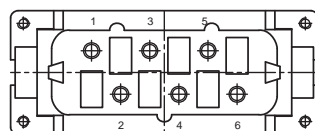


RECEPTACLE / 容器

code / 代码 E04213

BASE / 底座

code / 代码 E04236



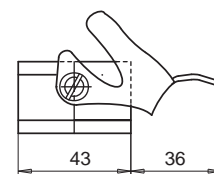
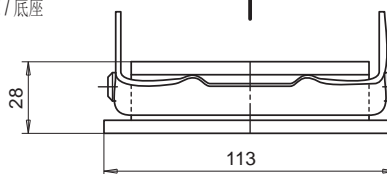
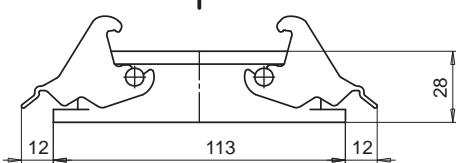
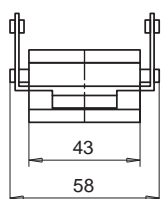
Mounting screw
安装螺钉

PLUG / 插头

code / 代码 E04212

BASE / 底座

code / 代码 E04237



CODING PIN FEMALE

代码PIN号 (螺母)

code / 代码 E04254



Where several plugs are mounted adjacent to one another, substitute these pins to avoid errors.

应用锁定阴阳极的特制销以防方向错误



CODING PIN MALE

代码PIN号 (螺栓)

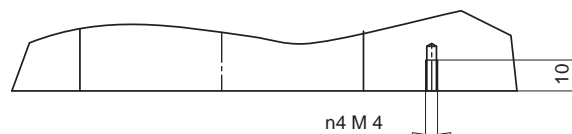
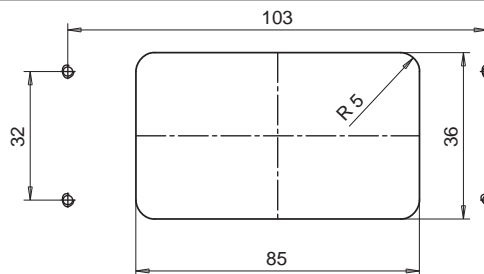
code / 代码 E04253

Layout to attach base to mold

模具底座安装图

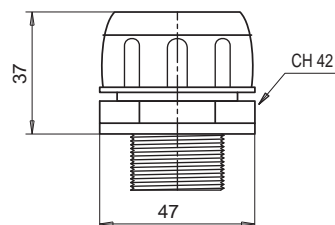
To mount base use n4 screws M4x12 UNI 5931

使用4个M4x12 UNI 5931螺丝安装底座



STRAIN RELIEF FITTING / 减压设备

code / 代码 E04252



Cables
min. 19
max. 29
电缆
最小 19
最大 29

ELECTRICAL CONNECTOR
10 poles - 240V - 16A

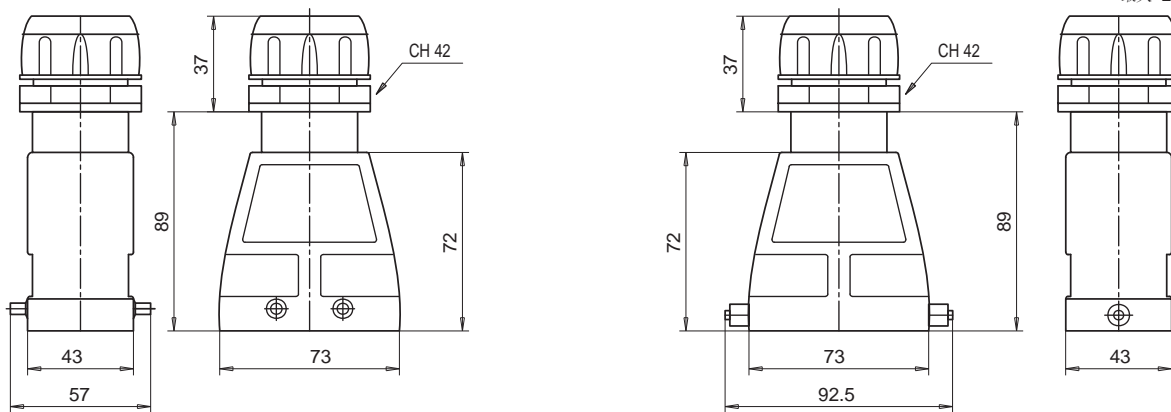
导电体
10 极 240V 16 A

code / 代码 E04232

HOOD / 罩子

code / 代码 E04233

Cables
min. 19
max. 29
电缆
最小 19
最大 29

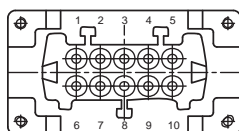


RECEPTACLE / 容器

code / 代码 E04215

BASE / 底座

code / 代码 E04230



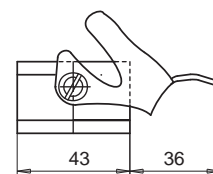
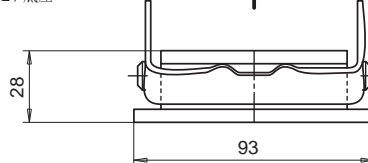
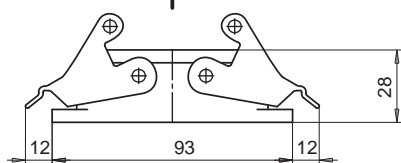
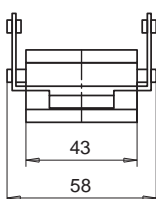
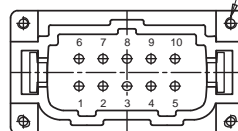
Mounting screw
安装螺钉

PLUG / 插头

code / 代码 E04214

BASE / 底座

code / 代码 E04231



CODING PIN FEMALE

代码PIN号 (螺母)

code / 代码 E04254



Where several plugs are mounted adjacent to one another, substitute these pins to avoid errors.

应用锁定阴阳极的特制销以防方向错误

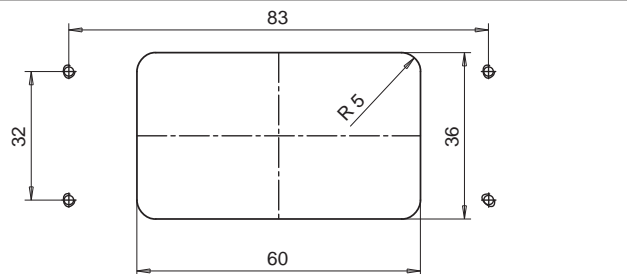
CODING PIN MALE

代码PIN号 (螺栓)

code / 代码 E04253

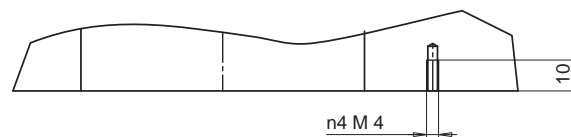


Layout to attach base to mold
模具底座安装图



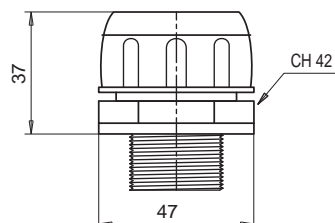
To mount base use n4 screws M4x12 UNI 5931

使用4个M4x12 UNI5931螺丝安装底座



STRAIN RELIEF FITTING / 减压设备

code / 代码 E04252



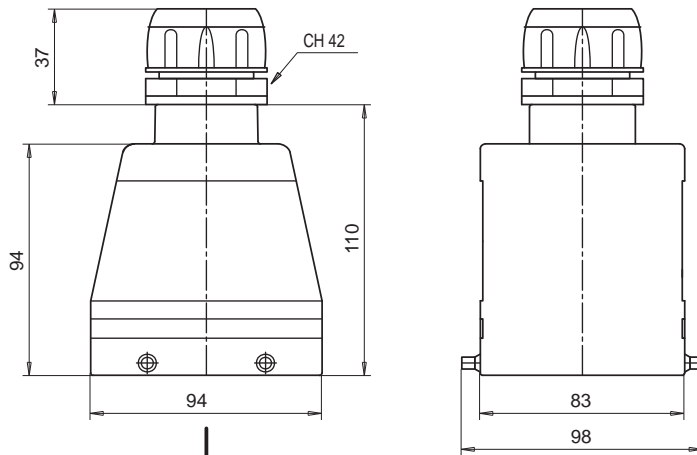
Cable
min. 19
max. 29
电缆
最小 19
最大 29

ELECTRICAL CONNECTOR 导电体
12 poles - 240V - 35A 12 极 240V 35 A

Cables
min. 19
max. 29
电缆
最小 19
最大 29

HOOD / 罩子

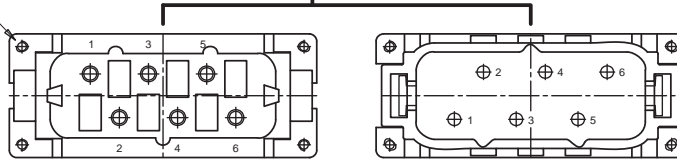
code / 代码 E04245



Mounting screw
安装螺钉

RECEPTACLE / 容器

code / 代码 E04213

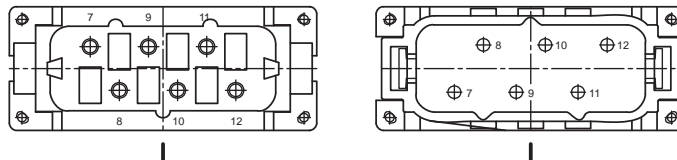


PLUG / 插头

code / 代码 E04212

RECEPTACLE / 容器

code / 代码 E04217

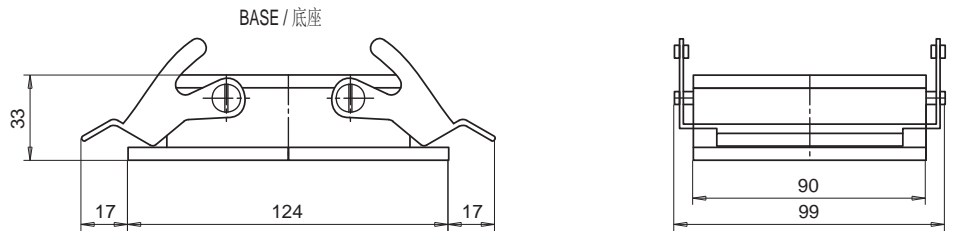


PLUG / 插头

code / 代码 E04216

BASE / 底座

code / 代码 E04244



CODING PIN FEMALE

代码PIN号 (螺母)

code / 代码 E04254



Where several plugs are mounted adjacent to one another, substitute these pins to avoid errors.

应用锁定阴阳极的特制销以防方向错误



CODING PIN MALE

代码PIN号 (螺栓)

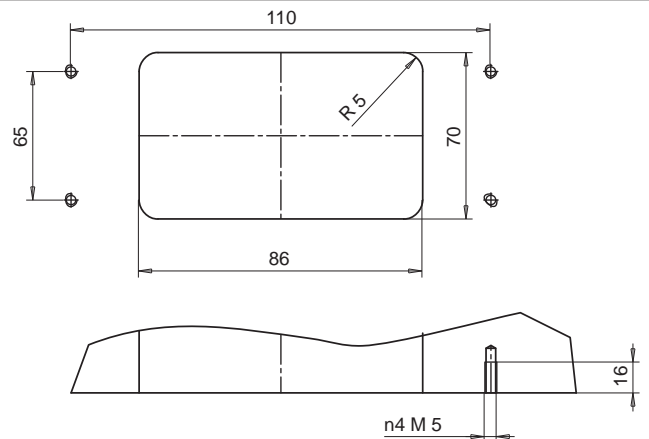
code / 代码 E04253

Layout to attach base to mold

模具底座安装图

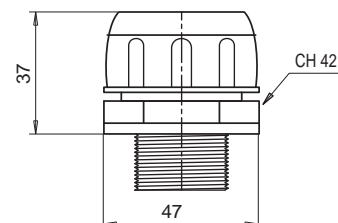
To mount base use n 4 screws M5x12 UNI 5931

使用4个M5x12 UNI5931螺丝安装底座



STRAIN RELIEF FITTING / 减压设备

code / 代码 E04252



Cable
min. 19
max. 29
电缆
最小 19
最大 29

ELECTRICAL CONNECTOR
16 poles - 240V - 16A

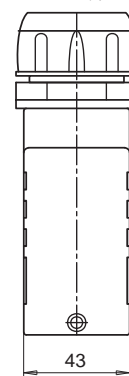
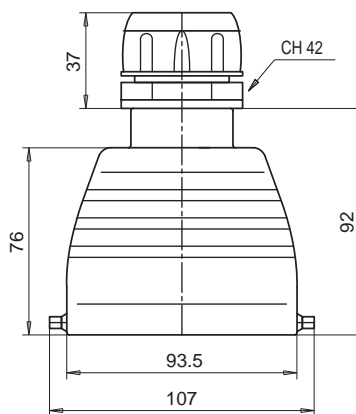
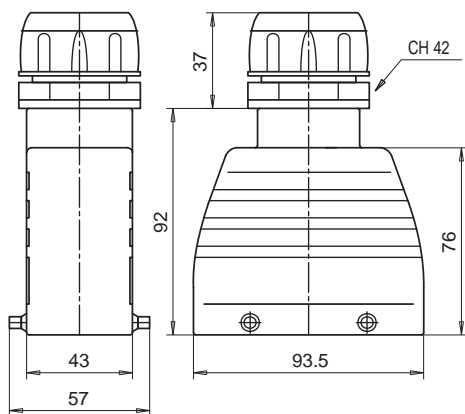
导体
16 极 240V 16A

Cables
min. 19
max. 29
电缆
最小 19
最大 29

code / 代码 E04238

HOOD / 罩子

code / 代码 E04239

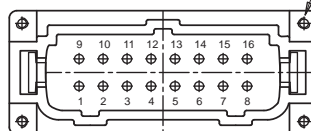
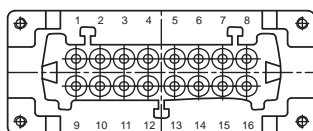


RECEPTACLE / 容器

code / 代码 E04219

BASE / 底座

code / 代码 E04236



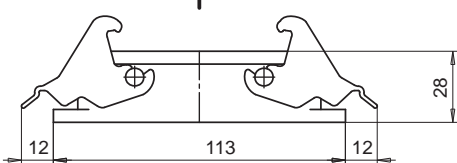
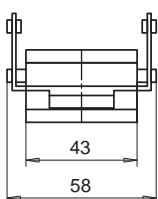
Mounting screw
安装螺钉

PLUG / 插头

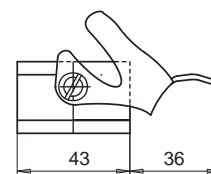
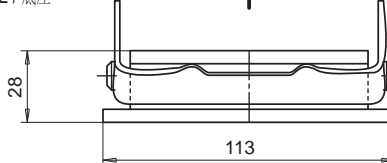
code / 代码 E04218

BASE / 底座

code / 代码 E04237



BASE / 底座



CODING PIN FEMALE
代码PIN号 (螺母)

code / 代码 E04254



Where several plugs are mounted adjacent to one another, substitute these pins to avoid errors.

应用锁定阴阳极的特制销以防方向错误

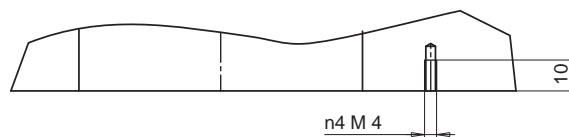
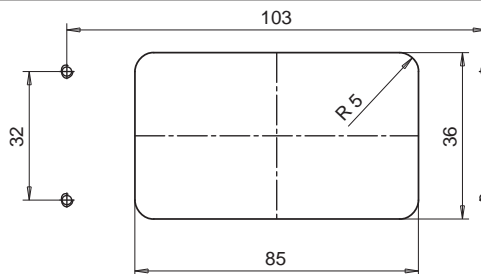


CODING PIN MALE
代码PIN号 (螺栓)

code / 代码 E04253

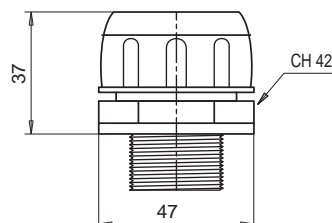
Layout to attach base to mold
模具底座安装图

To mount base use n 4 screws M4x12 UNI 5931
使用4个M4x12 UNI5931螺丝安装底座



STRAIN RELIEF FITTING / 减压设备

code / 代码 E04252



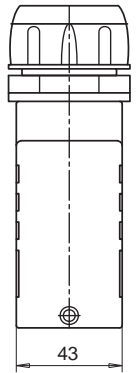
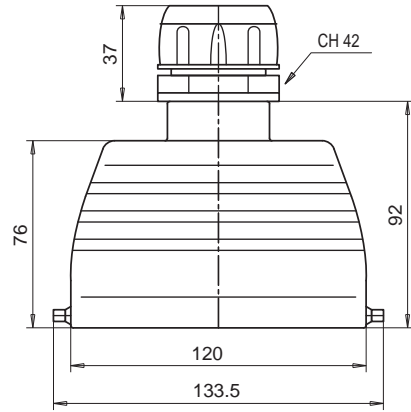
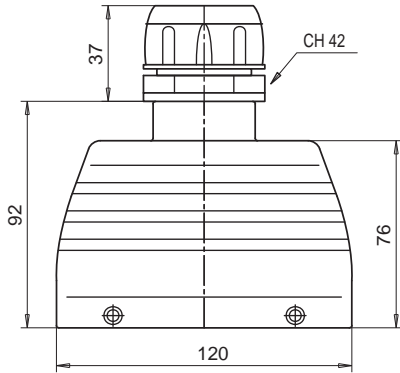
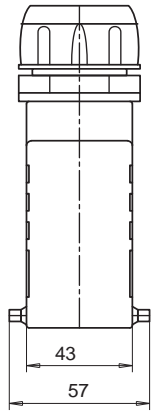
Cable
min. 19
max. 29
电缆
最小 19
最大 29

ELECTRICAL CONNECTOR
24 poles - 240V - 16A

导电体
16 极 240V 16 A

Cables
min. 19
max. 29

电缆
最小 19
最大 29



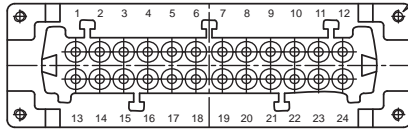
code / 代码 E04242

HOOD / 罩子

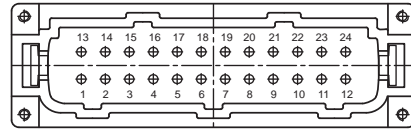
code / 代码 E04243

RECEPTACLE / 容器

code / 代码 E04221



Mounting screw
安装螺钉

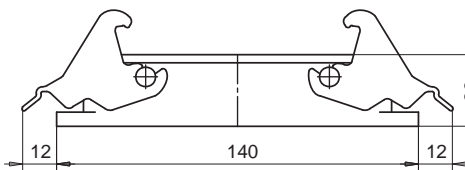
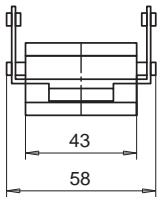


PLUG / 插头

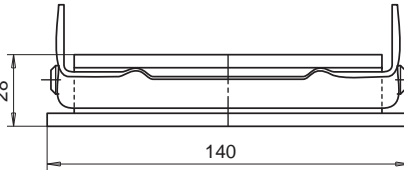
code / 代码 E04220

BASE / 底座

code / 代码 E04240

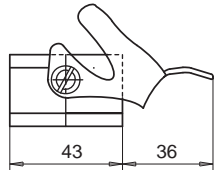


BASE / 底座



BASE / 底座

code / 代码 E04241



CODING PIN FEMALE

代码PIN号 (螺母)

code / 代码 E04254



Where several plugs are mounted adjacent to one another, substitute these pins to avoid errors.

应用锁定阴阳极的特制销以防方向错误



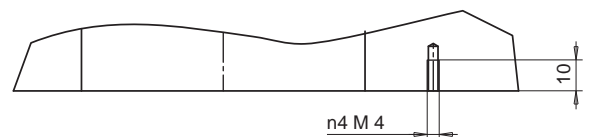
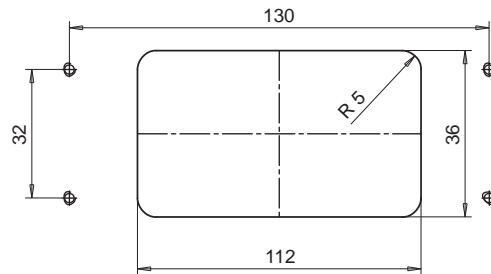
CODING PIN MALE

代码PIN号 (螺栓)

code / 代码 E04253

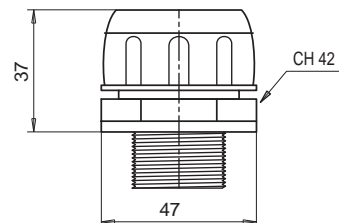
Layout to attach base to mold
模具底座安装图

To mount base use n 4 screws M4x12 UNI 5931
使用4个M4x12 UNI5931螺丝安装底座



STRAIN RELIEF FITTING / 减压设备

code / 代码 E04252



Cable
min. 19
max. 29

电缆
最小 19
最大 29

ELECTRICAL CONNECTOR
32 poles - 240V - 16A

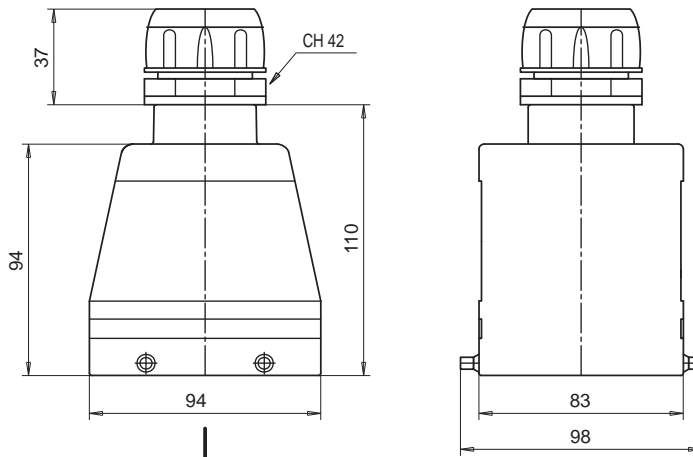
导电体
32 极 240V 16 A

Cables
min. 19
max. 29

电缆
最小 19
最大 29

HOOD / 罩子

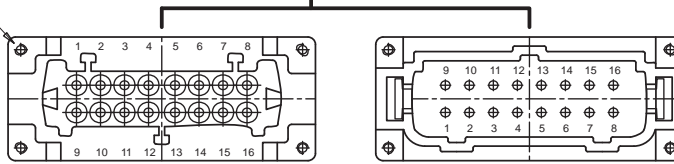
code / 代码 E04245



Mounting screw
安装螺钉

RECEPTACLE / 容器

code / 代码 E04219

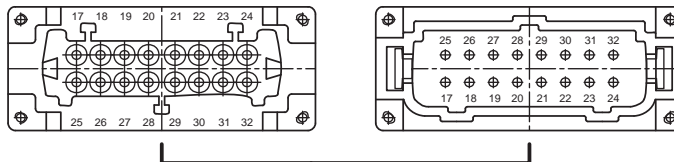


PLUG / 插头

code / 代码 E04218

RECEPTACLE / 容器

code / 代码 E05142

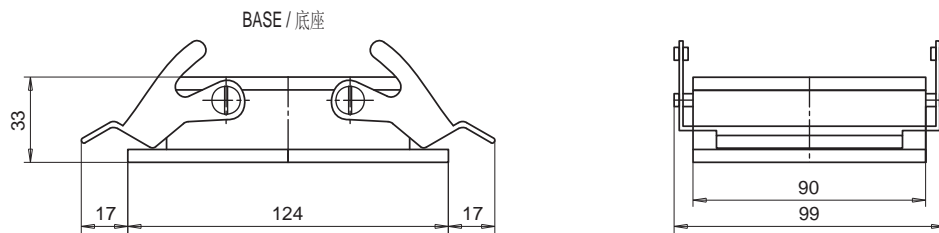


PLUG / 插头

code / 代码 E05141

BASE / 底座

code / 代码 E04244



CODING PIN FEMALE

代码PIN号 (螺母)

code / 代码 E04254



Where several plugs are mounted adjacent to one another, substitute these pins to avoid errors.

应用锁定阴阳极的特制销以防方向错误



CODING PIN MALE

代码PIN号 (螺栓)

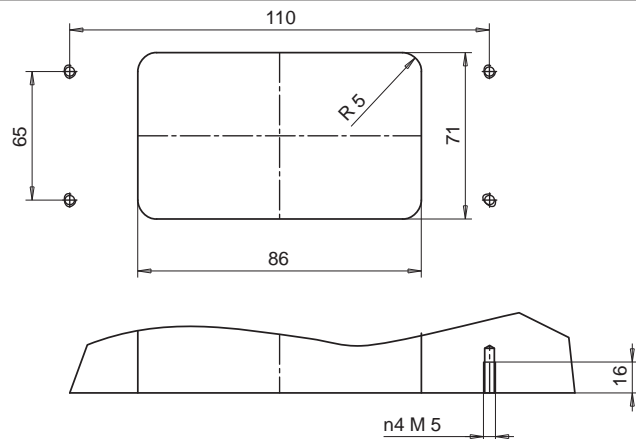
code / 代码 E04253

Layout to attach base to mold

模具底座安装图

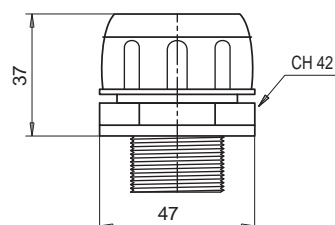
To mount base use n 4 screws M5x12 UNI 5931

使用4个M5x12 UNI5931螺丝安装底座



STRAIN RELIEF FITTING / 减压设备

code / 代码 E04252



Cable
min. 19
max. 29

电缆
最小 19
最大 29

ELECTRICAL CONNECTOR
48 poles - 240V - 16A

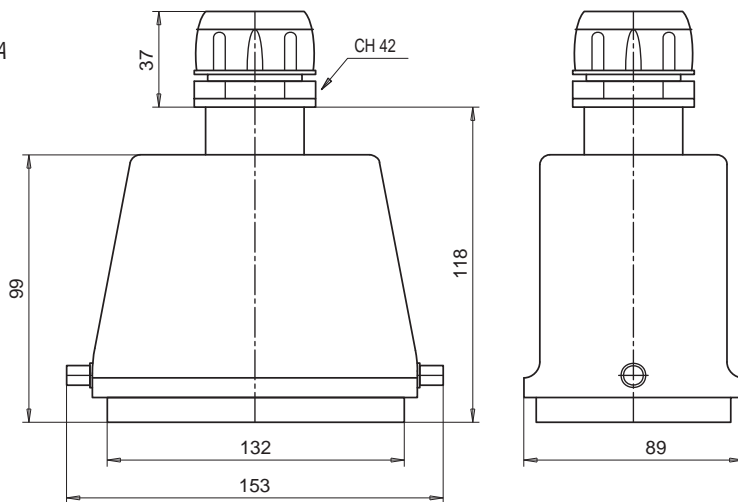
导体
48 极 240V 16A

Cables
min. 19
max. 29

电缆
最小 19
最大 29

HOOD / 罩子

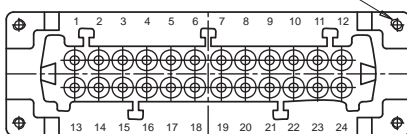
code / 代码 E04247



Mounting screw
安装螺钉

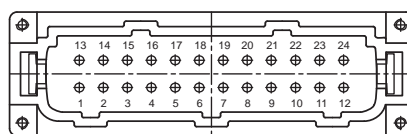
RECEPTACLE / 容器

code / 代码 E04221



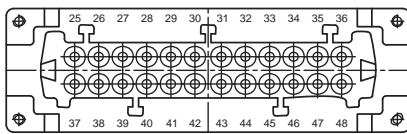
PLUG / 插头

code / 代码 E04220



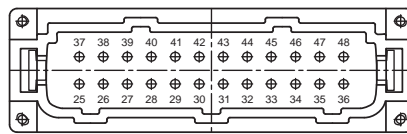
RECEPTACLE / 容器

code / 代码 E05147



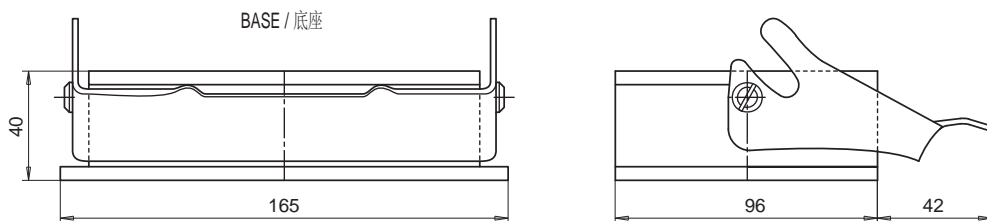
PLUG / 插头

code / 代码 E05146



BASE / 底座

code / 代码 E04246



CODING PIN FEMALE

代码PIN号 (螺母)

code / 代码 E04254



Where several plugs are mounted adjacent to one another, substitute these pins to avoid errors.

应用锁定阴阳极的特制销以防方向错误



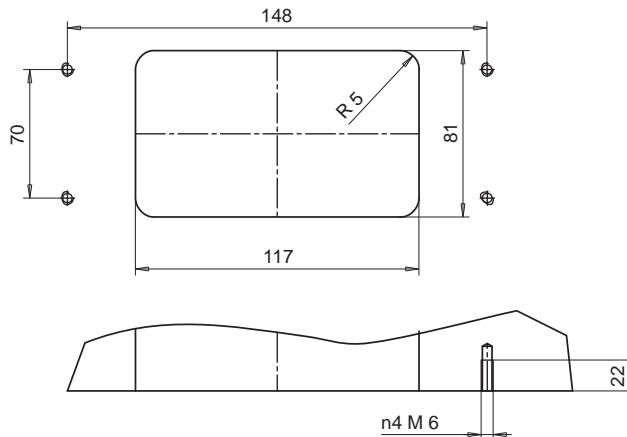
CODING PIN MALE

代码PIN号 (螺栓)

code / 代码 E04253

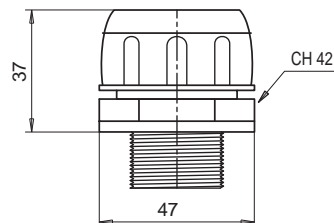
Layout to attach base to mold
模具底座安装图

To mount base use n 4 screws M6x12 UNI 5931
使用4个M6x12 UNI 5931螺丝安装底座



STRAIN RELIEF FITTING / 减压设备

code / 代码 E04252



Cable
min. 19
max. 29

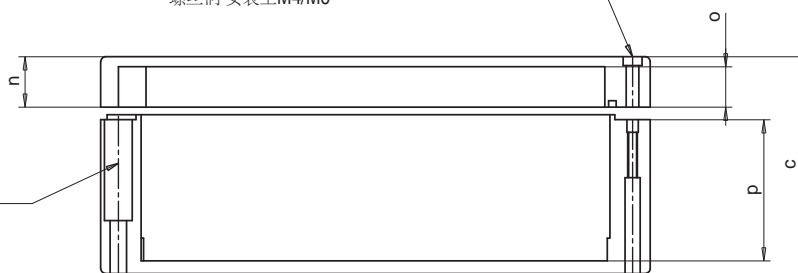
电缆
最小 19
最大 29

TERMINAL MOUNTING BOX / 接线盒安装

Material / 材质 Aluminium / 铝

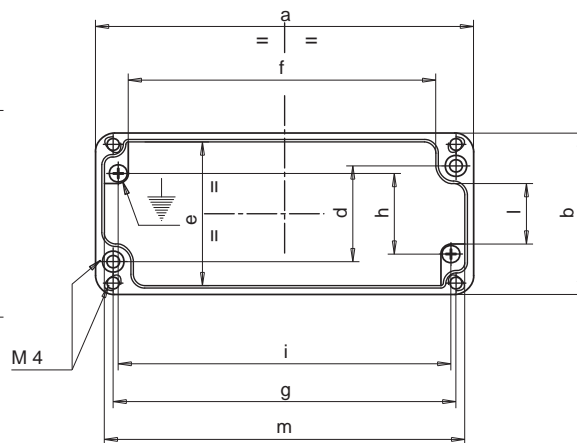
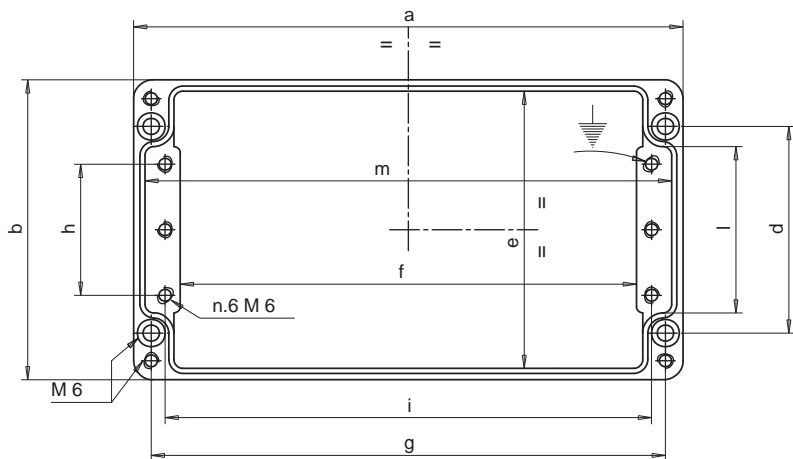
Screw hole M4/M6 to mount cover
螺丝洞 安装上M4/M6

Screw hole M4/M6 to mount terminal box
螺丝洞 M4/M6 以安装接线盒



Type / 类型 A

Type / 类型 B



code/代码	Type/类型	a	b	c	d	e	f	g	h	i	l	m	n	o	p	
E04384	A	360	120	80	82	111	328	344	52	333	66	351	20	16.5	56.5	
E04385		220					188	204		193		211				
E04386		160	160	90	110	151	120	140	76	130	90	151				66.5
E05144		360					320	340		330		351				
E05153		330	230	180	181	221	290	310	144	300	160	318				15
E04387	B	250	80	52	52	72	224	238	48	230	40	242	12	8.5	36.5	
E04388		150	64	34	36	56	126	138	32	132	24	142	9	5.5	21.5	
E05127		175	80	57	52	72	147	163	30	156	50	167	15	11.5	38.5	

APPLICATION EXAMPLES OF TERMINAL MOUNTING BOX / 安装接线盒实例

