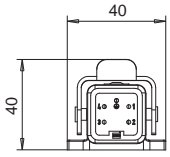


Composed by: cover, receptacle and strain relief.
Bestehend: Gehäuse, Zugentlastung und Buchse/Stecker.

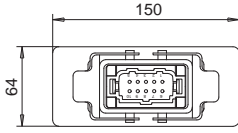
Diagram of connectors assemblies composed by: cover, box and receptacle.

Schema des zusammengesetzten Verbindungssets bestehend aus: Gehäuse, Steckverbinder und Buchse/Stecker.

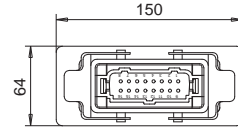
N. plug Menge	Q.ty poles Menge polig	code Code
1	4 Male poles 4 Arretierstift	E16833



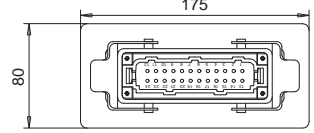
N. plug Menge	Q.ty poles Menge polig	code Code
1	10 female poles 10 Arretierhülse	E15761
1	10 Male poles 10 Arretierstift	E05128



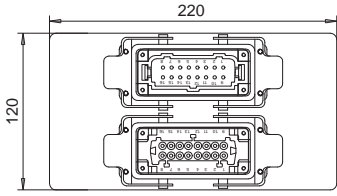
N. plug Menge	Q.ty poles Menge polig	code Code
1	16 female poles 16 Arretierhülse	E09509
1	16 Male poles 16 Arretierstift	E05129



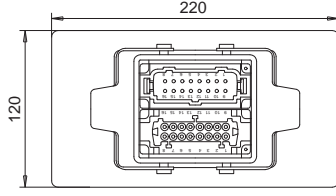
N. plug Menge	Q.ty poles Menge polig	code Code
1	24 female poles 24 Arretierhülse	E09510
1	24 Male poles 24 Arretierstift	E05131



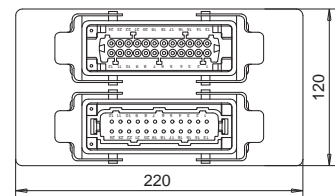
N. plug Menge	Q.ty poles Menge polig	code Code
1	16 female poles 16 Arretierhülse	E08102
1	16 Male poles 16 Arretierstift	



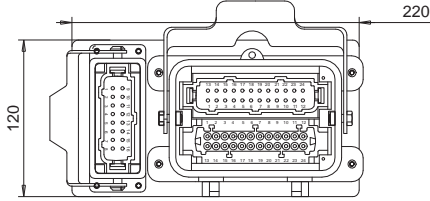
N. plug Menge	Q.ty poles Menge polig	code Code
1	16 female poles 16 Arretierhülse + 16 Male poles 16 Arretierstift	E05134



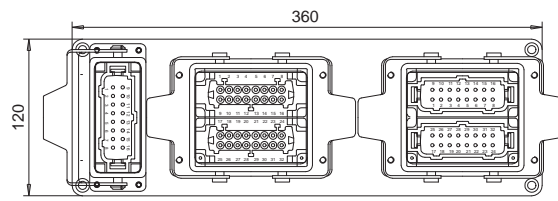
N. plug Menge	Q.ty poles Menge polig	code Code
1	24 female poles 24 Arretierhülse	E05137
1	24 Male poles 24 Arretierstift	



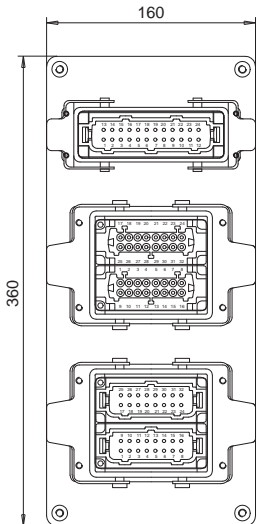
N. plug Menge	Q.ty poles / Menge polig	code Code
1	24 female poles 24 Arretierhülse + 24 Male poles 24 Arretierstift	E05140
1	16 Male poles 16 Arretierstift	



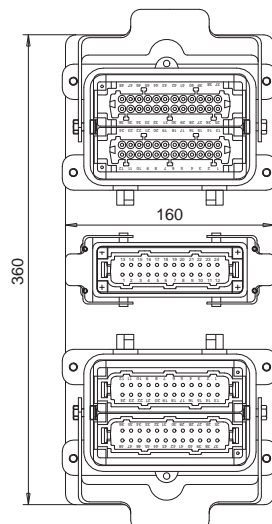
N. plug Menge	Q.ty poles / Menge polig	code Code
1	32 female poles 32 Arretierhülse	E05143
1	32 Male poles 32 Arretierstift	
1	16 Male poles 16 Arretierstift	



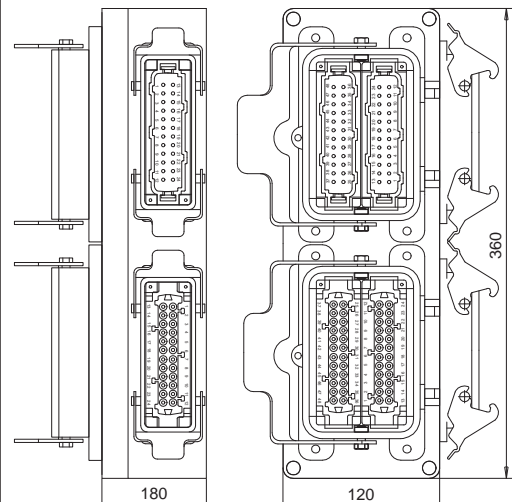
N. plug Menge	Q.ty poles Menge polig	code Code
1	32 Male poles 32 Arretierstift	E05145
1	32 female poles 32 Arretierhülse	
1	24 Male poles 24 Arretierstift	



N. plug Menge	Q.ty poles Menge polig	code Code
1	48 Male poles 48 Arretierstift	E05148
1	48 female poles 48 Arretierhülse	
1	24 Male poles 24 Arretierstift	



N. plug Menge	Q.ty poles Menge polig	code Code
1	48 Male poles 48 Arretierstift	E05150
1	48 female poles 48 Arretierhülse	
1	24 Male poles 24 Arretierstift	
1	24 female poles 24 Arretierhülse	



Q.ty / Menge	Code / Code	E05151
2	32 Female poles 32 Arretierhülse	
2	32 Male poles 32 Arretierstift	
1	24 Female poles 24 Arretierhülse	
1	24 Male poles 24 Arretierstift	

Q.ty / Menge	Code / Code	E05152
2	48 female poles 48 Arretierhülse	
2	48 male poles 48 Arretierstift	

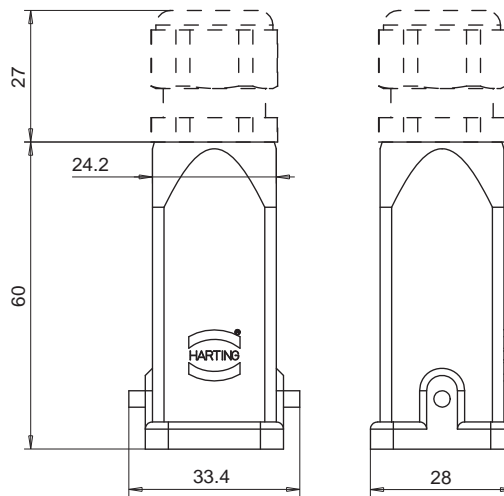
Q.ty / Menge	Code / Code	E05155
2	48 Male poles 48 Arretierstift	
2	48 Female poles 48 Arretierhülse	
1	24 Male poles 24 Arretierstift	
1	24 Female poles 24 Arretierhülse	

ELECTRICAL CONNECTOR *STECKVERBINDUNGEN*
 4 poles - 240V - 10A *4 polig - 240V - 10A*

Cables
 min. 6
 max. 12
Kabeldurchmesser
 min. 6
 max. 12

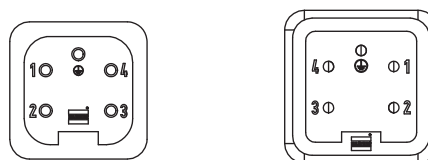
HOOD / GEHÄUSE

Code / Code E16188



RECEPTACLE / BUCHSE

Code / Code E11160



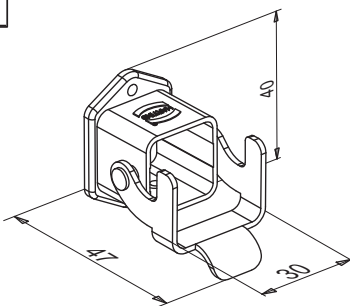
PLUG / STECKER

Code / Code E16186

BASE / KUPPLUNG FÜR STECKERGEHÄUSE

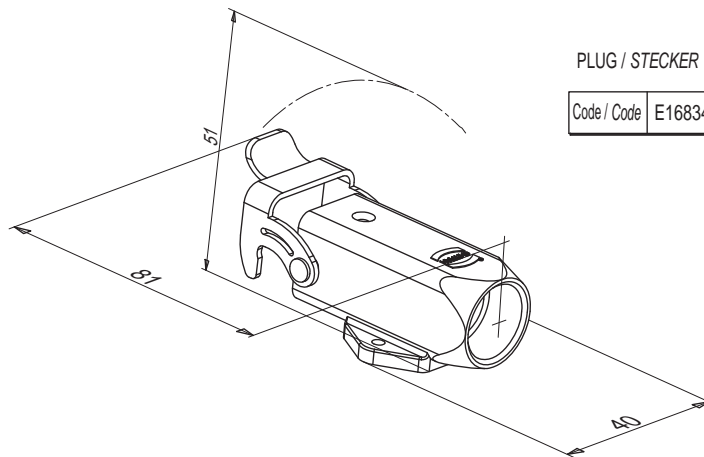
BASE / KUPPLUNG FÜR STECKERGEHÄUSE

Code / Code E11161



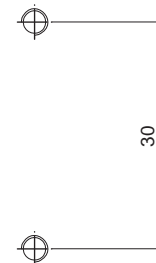
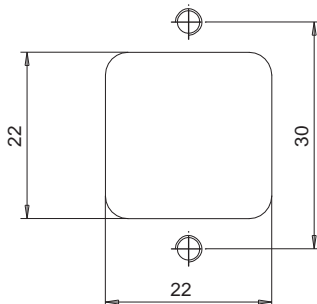
PLUG / STECKER

Code / Code E16834



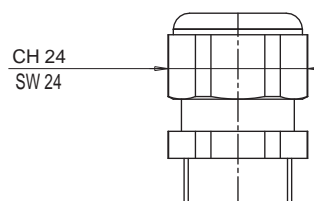
Layout to attach base to mold
Montageskizze für Gehäuse auf dem Werkzeug

To mount base use n 2 screws M3x10 UNI 5931
Zur Befestigung des Gehäuses werden 2 Schrauben M3x10 UNI 5931 benötigt



STRAIN RELIEF FITTING / KUPPLUNG FÜR ZUGENTLASTUNG

Code / Code E16187



Cable
 min. 6
 max. 12
Kabeldurchmesser
 min. 6
 max. 12

ELECTRICAL CONNECTOR
6 poles - 240V - 35A

STECKVERBINDUNGEN
6 polig - 240V - 35A

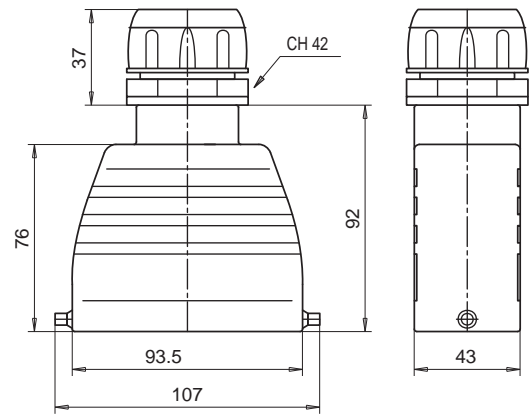
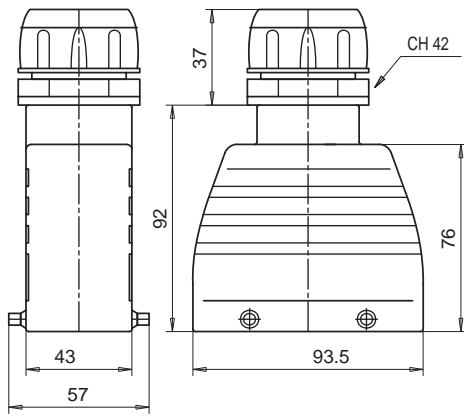
Cables
min. 19
max. 29

Kabeldurchmesser
min. 19
max. 29

Code / Code E04238

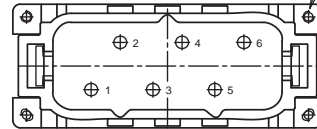
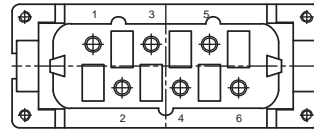
HOOD / GEHÄUSE

Code / Code E04239



RECEPTACLE / BUCHSE

Code / Code E04213



PLUG / STECKER

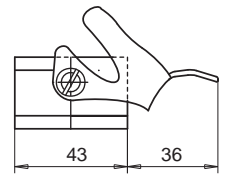
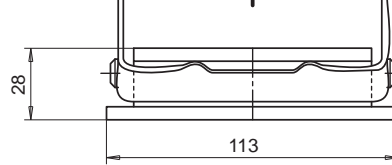
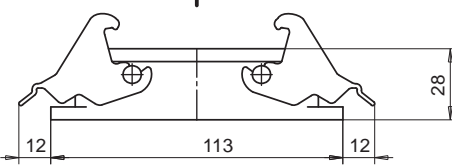
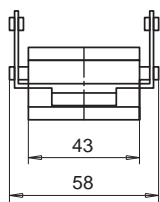
Code / Code E04212

BASE / KUPPLUNG FÜR STECKERGEHÄUSE

Code / Code E04236

BASE / KUPPLUNG FÜR STECKERGEHÄUSE

Code / Code E04237



Mounting screw
Befestigungsschrauben

CODING PIN FEMALE
ARRETIERHÜLSE

Code / Code E04254



Where several plugs are mounted adjacent to one another, substitute these pins to avoid errors.

Um fehlerhafte Montagen zu vermeiden sind ein Paar oder mehrere Arretierhülsen und-stifte zu montieren.

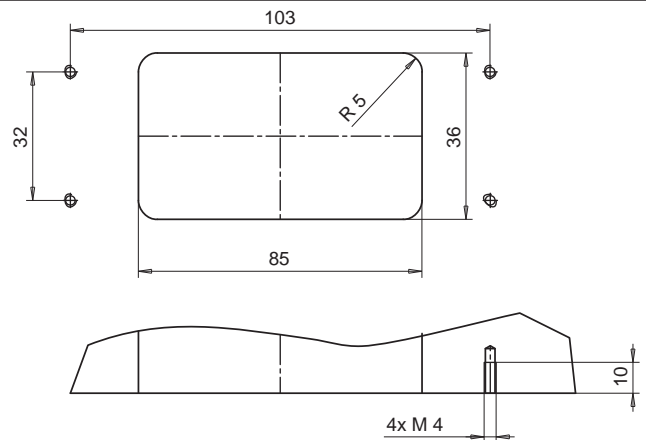


CODING PIN MALE
ARRETIERSTIFT

Code / Code E04253

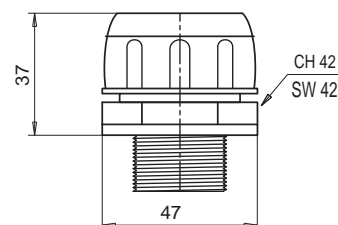
Layout to attach base to mold
Montageskizze für Gehäuse auf dem Werkzeug

To mount base use n4 screws M4x12 UNI 5931
Zur Befestigung des Gehäuses werden 4 Schrauben M4x12 UNI 5931 benötigt



STRAIN RELIEF FITTING / KUPPLUNG FÜR ZUGENTLASTUNG

Code / Code E04252



Cables
min. 19
max. 29

Kabeldurchmesser
min. 19
max. 29

ELECTRICAL CONNECTOR
10 poles - 240V - 16A

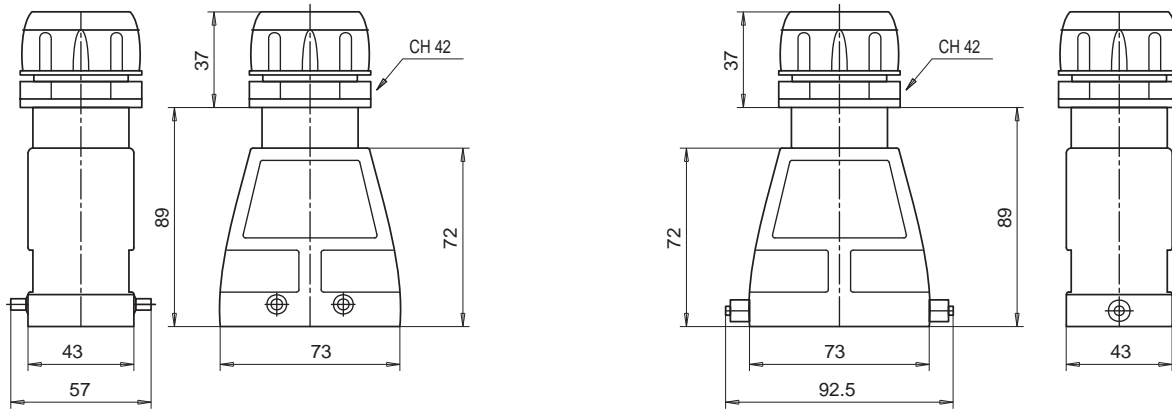
STECKVERBINDUNGEN
10 polig - 240V - 16A

Cables
min. 19
max. 29
Kabeldurchmesser
min. 19
max. 29

Code / Code E04232

HOOD / GEHÄUSE

Code / Code E04233

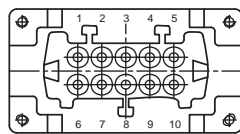


RECEPTACLE / BUCHSE

Code / Code E04215

BASE / KUPPLUNG FÜR STECKERGEHÄUSE

Code / Code E04230



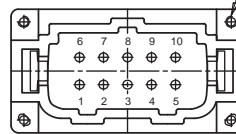
Mounting screw
Befestigungsschrauben

PLUG / STECKER

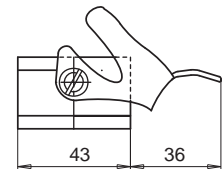
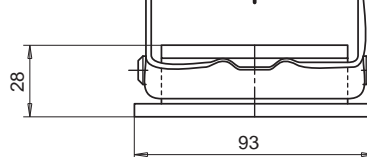
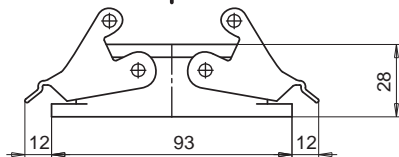
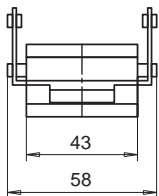
Code / Code E04214

BASE / KUPPLUNG FÜR STECKERGEHÄUSE

Code / Code E04231



BASE / KUPPLUNG FÜR STECKERGEHÄUSE



CODING PIN FEMALE

ARRETIERHÜLSE

code / Code E04254



Where several plugs are mounted adjacent to one another, substitute these pins to avoid errors.

Um fehlerhafte Montagen zu vermeiden sind ein Paar oder mehrere Arretierhülsen und-stifte zu montieren.

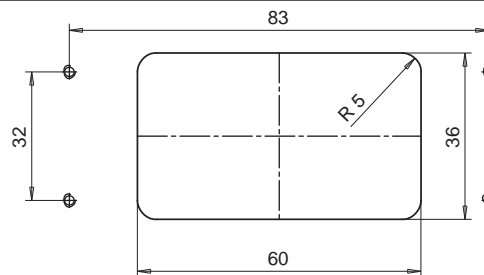


CODING PIN MALE

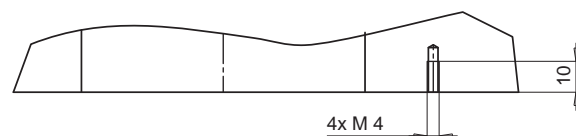
ARRETIERTSTIFT

code / Code E04253

Layout to attach base to mold
Montageskizze für Gehäuse auf dem Werkzeug

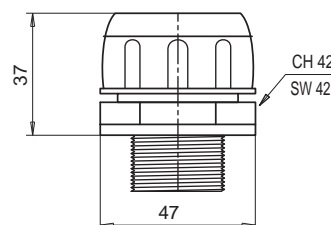


To mount base use n4 screws M4x12 UNI 5931
Zur Befestigung des Gehäuses werden 4 Schrauben M4x12 UNI 5931 benötigt



STRAIN RELIEF FITTING / KUPPLUNG FÜR ZUGENTLASTUNG

Code / Code E04252



Cable
min. 19
max. 29
Kabeldurchmesser
min. 19
max. 29

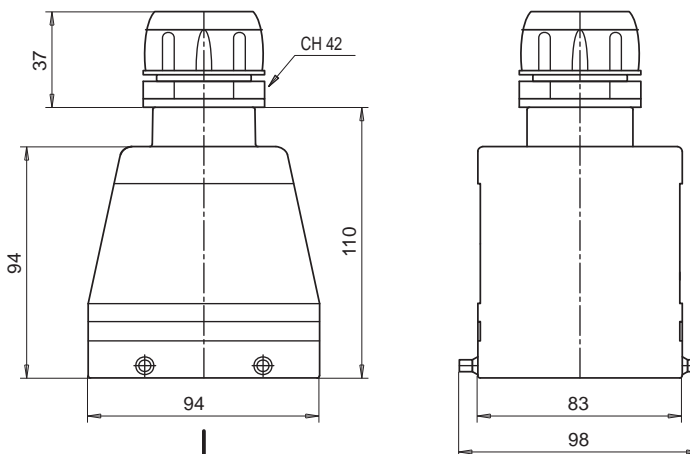
ELECTRICAL CONNECTOR
12 poles - 240V - 35A

STECKVERBINDUNGEN
12 polig - 240V - 35A

Cables
min. 19
max. 29
Kabeldurchmesser
min. 19
max. 29

HOOD / GEHÄUSE

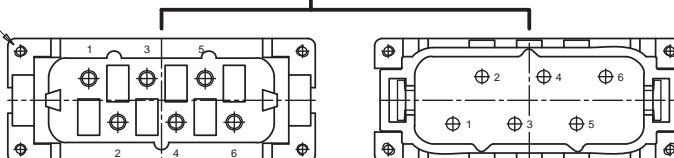
Code / Code E04245



Mounting screw
Befestigungsschrauben

RECEPTACLE / BUCHSE

Code / Code E04213

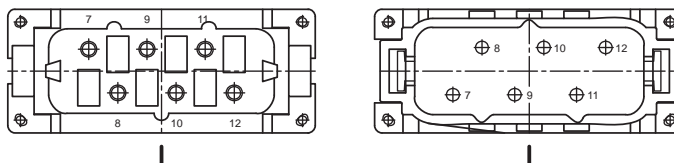


PLUG / STECKER

Code / Code E04212

RECEPTACLE / BUCHSE

Code / Code E04217

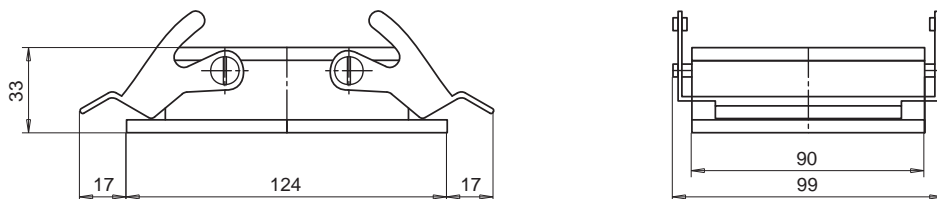


PLUG / STECKER

Code / Code E04216

BASE / KUPPLUNG FÜR STECKERGEHÄUSE

Code / Code E04244



CODING PIN FEMALE

ARRETIERHÜLSE

Code / Code E04254



Where several plugs are mounted adjacent to one another, substitute these pins to avoid errors.

Um fehlerhafte Montagen zu vermeiden sind ein Paar oder mehrere Arretierhülsen und-stifte zu montieren.

CODING PIN MALE

ARRETIERSTIFT

Code / Code E04253

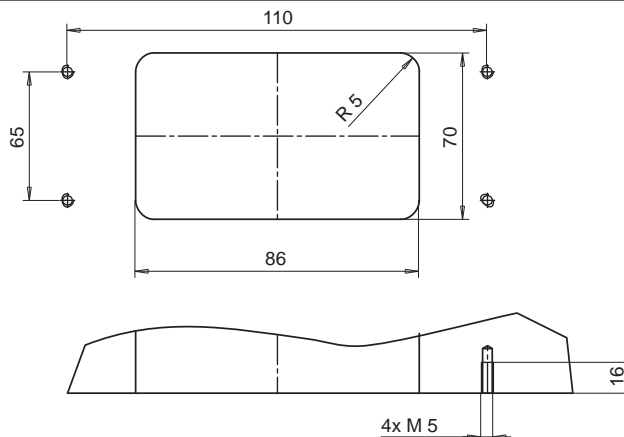


Layout to attach base to mold

Montageskizze für Gehäuse auf dem Werkzeug

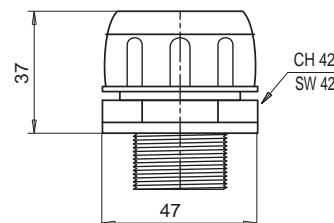
To mount base use n 4 screws M5x12 UNI 5931

Zur Befestigung des Gehäuses werden 4 Schrauben M5x12 UNI 5931 benötigt



STRAIN RELIEF FITTING / KUPPLUNG FÜR ZUGENTLASTUNG

Code / Code E04252



Cable
min. 19
max. 29
Kabeldurchmesser
min. 19
max. 29

ELECTRICAL CONNECTOR
16 poles - 240V - 16A

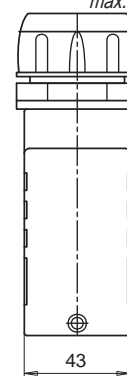
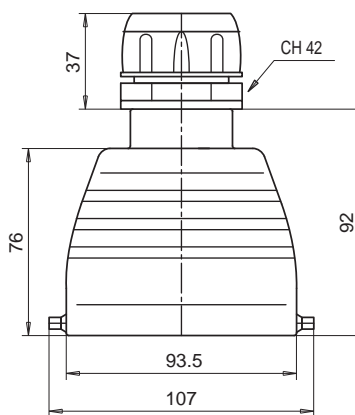
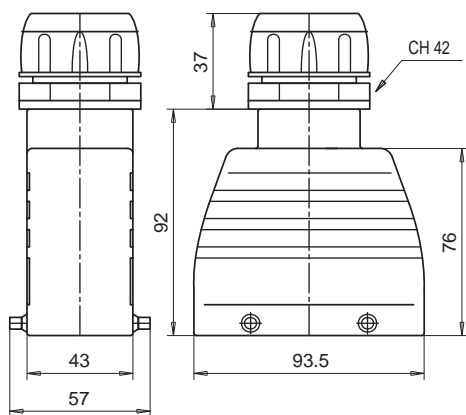
STECKVERBINDUNGEN
16 polig - 240V - 16A

Cables
min. 19
max. 29
Kabeldurchmesser
min. 19
max. 29

Code / Code E04238

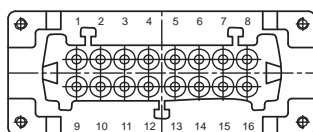
HOOD / GEHÄUSE

Code / Code E04239



RECEPTACLE / BUCHSE

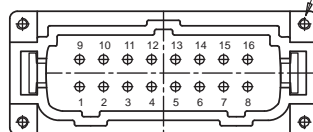
Code / Code E04219



Mounting screw
Befestigungsschrauben

PLUG / STECKER

Code / Code E04218



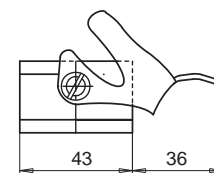
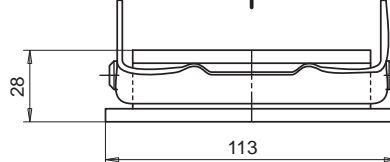
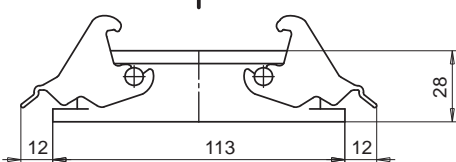
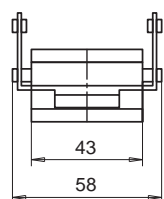
BASE / KUPPLUNG FÜR STECKERGEHÄUSE

Code / Code E04236

BASE / KUPPLUNG FÜR STECKERGEHÄUSE

Code / Code E04237

BASE / KUPPLUNG FÜR STECKERGEHÄUSE



CODING PIN FEMALE
ARRETIERHÜLSE

Code / Code E04254



Where several plugs are mounted adjacent to one another, substitute these pins to avoid errors.

Um fehlerhafte Montagen zu vermeiden sind ein Paar oder mehrere Arretierhülsen und-stifte zu montieren.



CODING PIN MALE
ARRETIERSTIFT

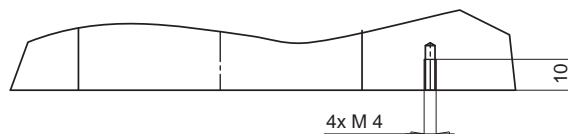
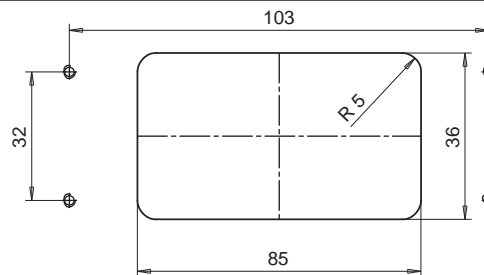
Code / Code E04253

Layout to attach base to mold

Montageskizze für Gehäuse auf dem Werkzeug

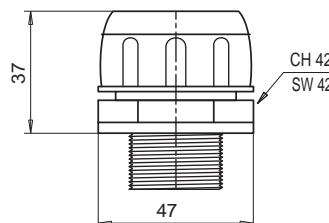
To mount base use n 4 screws M4x12 UNI 5931

Zur Befestigung des Gehäuses werden 4 Schrauben M4x12 UNI 5931 benötigt



STRAIN RELIEF FITTING / KUPPLUNG FÜR ZUGENTLASTUNG

Code / Code E04252



Cable
min. 19
max. 29
Kabeldurchmesser
min. 19
max. 29

