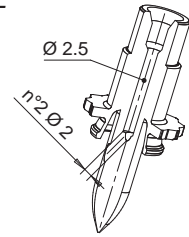


• NOZZLES FOR MULTICAVITY MOLDS / DÜSEN IN VERBINDUNG MIT EINEM VERTEILERBLOCK

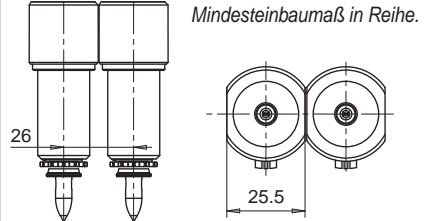
Nozzle code Düse	L	Heater code Heizung	Watt	Thermocouple / Thermofühler	
				grounded / geerdet	insulated / isoliert
F24056-A-1B-..	56	E09610	200	E05302-F24	E16027-F24
F24066-A-1B-..	66	E09428	200		
F24076-A-1B-..	76	E09431	200		
F24086-A-1B-..	86	E09433	200		
F24096-A-1B-..	96	E09436	200	E05504-F24	E16029-F24
F24106-A-1B-..	106	E09438	250		
F24116-A-1B-..	116	E09441	250		
F24126-A-1B-..	126	E09443	250		
F24136-A-1B-..	136	E09446	250	E05917-F24	E16030-F24
F24146-A-1B-..	146	E09448	270		
F24156-A-1B-..	156	E09451	270		
F24166-A-1B-..	166	E09453	300		
F24176-A-1B-..	176	E09456	300	E05913-F24	E16031-F24
F24186-A-1B-..	186	E09458	350		
F24196-A-1B-..	196	E09461	350		
F24206-A-1B-..	206	E09463	350		
F24216-A-1B-..	216	E09465	350		

TIP / DÜSENSPITZE

Code tip  
Düsen Spitze  
**E09479**



Minimum distance between centres is possible through special execution.



HEATER AND THERMOCOUPLE  
HEIZUNG UND THERMOFÜHLER

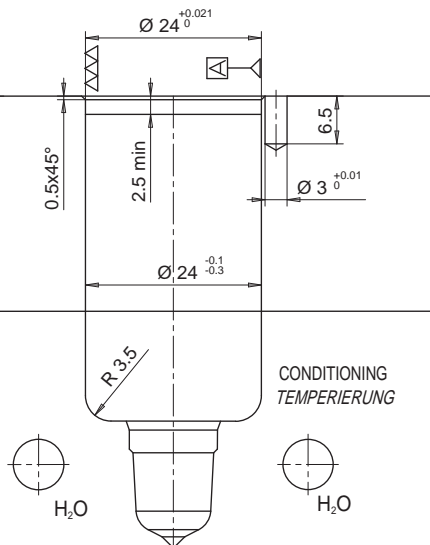
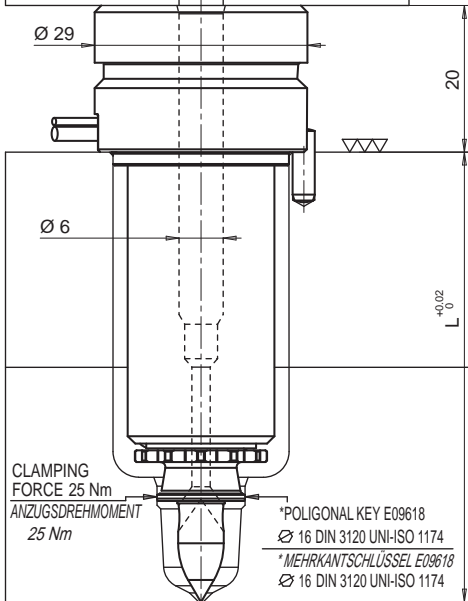
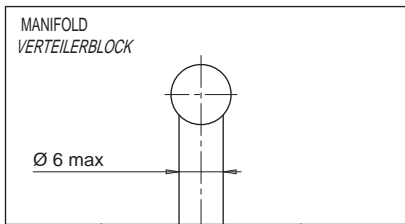
HEATER HEIZUNG	White / Weiss Red White Rot Weiss	230 V
-------------------	---	-------

THERMOCOUPLE THERMOFÜHLER	Red / Rot Blue / Blau	TC+ TC-
------------------------------	--------------------------	------------

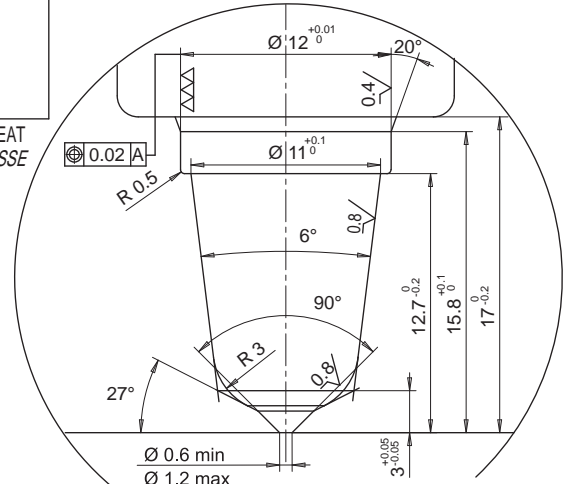
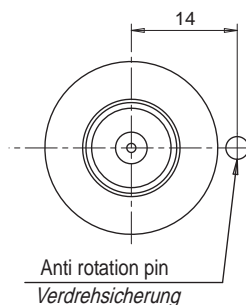
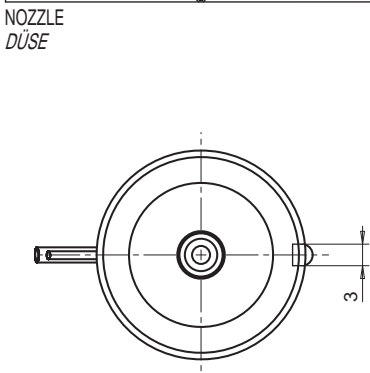
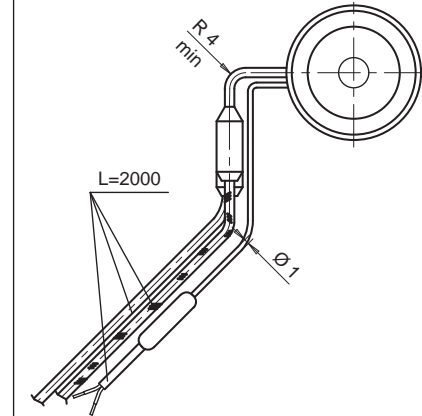
Suffix Zusatzcode	Description / Beschreibung
.. - JG	Grounded thermocouple with J type calibration Geerdeter Thermofühler Typ J.
.. - JU	Insulated thermocouple with J type calibration Isolierter Thermofühler Typ J.

Example of order:  
Bestellbeispiel: **F 24 096-A-1B-JG**  
Nozzle - Düse Ø  
Length - Länge  
Cables exit in the top  
Kabelabgang der Beheizung  
Tip type - Düsen Spitze  
Grounded thermocouple - Thermofühler geerdet

If non specified, grounded thermocouple is provided.  
Wenn nicht spezifiziert, wird der geerdete Thermofühler geliefert



Nozzle plate  
Düsenhalblette



Injection diameter is approximate and could change depending on the injected volume of thermoplastic material and on the part wall thickness.  
Der Durchmesser steht in Abhängigkeit des Volumens und der Materialstärke des Bauteils.