



Composed by: cover, receptacle and strain relief.  
Bestehend: Gehäuse, Zugentlastung und Buchse/Stecker.

N. plug Menge	Q.ty poles Menge polig	code Code
n° 1	4 Male poles 4 Arretierstift	E16833

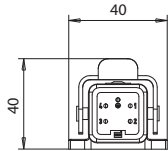
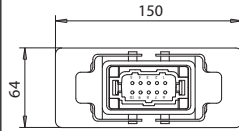


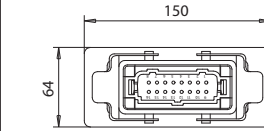
Diagram of connectors assemblies composed by: cover, box and receptacle.

Schema des zusammengesetzten Verbindungssets bestehend aus: Gehäuse, Steckverbinder und Buchse/Stecker.

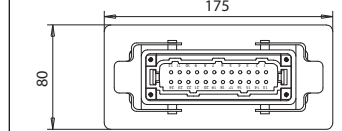
N. plug Menge	Q.ty poles Menge polig	code Code
n° 1	10 female poles 10 Arretierhülse	E15761
n° 1	10 Male poles 10 Arretierstift	E05128



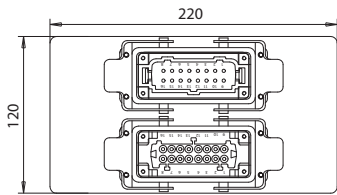
N. plug Menge	Q.ty poles Menge polig	code Code
n° 1	16 female poles 16 Arretierhülse	E09509
n° 1	16 Male poles 16 Arretierstift	E05129



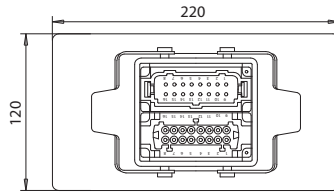
N. plug Menge	Q.ty poles Menge polig	code Code
n° 1	24 female poles 24 Arretierhülse	E09510
n° 1	24 Male poles 24 Arretierstift	E05131



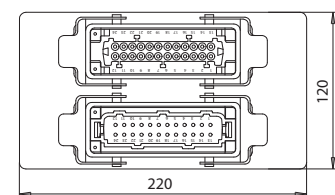
N. plug Menge	Q.ty poles Menge polig	code Code
n° 1	16 female poles 16 Arretierhülse	E08102
n° 1	16 Male poles 16 Arretierstift	



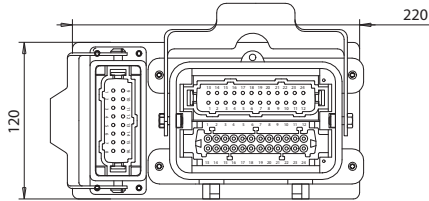
N. plug Menge	Q.ty poles Menge polig	code Code
n° 1	16 female poles 16 Arretierhülse + 16 Male poles 16 Arretierstift	E05134



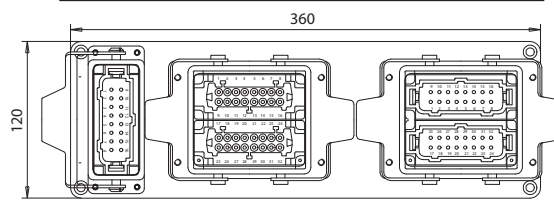
N. plug Menge	Q.ty poles Menge polig	code Code
n° 1	24 female poles 24 Arretierhülse	E05137
n° 1	24 Male poles 24 Arretierstift	



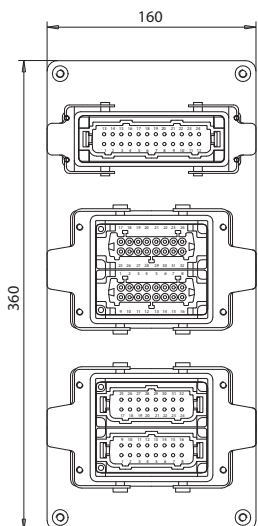
N. plug Menge	Q.ty poles / Menge polig		code Code
n° 1	24 female poles 24 Male poles	24 Arretierhülse + 24 Arretierstift	E05140
n° 1	16 Male poles	16 Arretierstift	



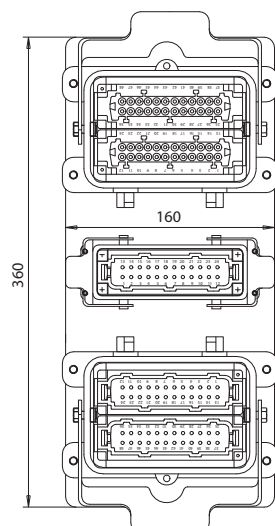
N. plug Menge	Q.ty poles / Menge polig		code Code
n° 1	32 female poles	32 Arretierhülse	E05143
n° 1	32 Male poles	32 Arretierstift	
n° 1	16 Male poles	16 Arretierstift	



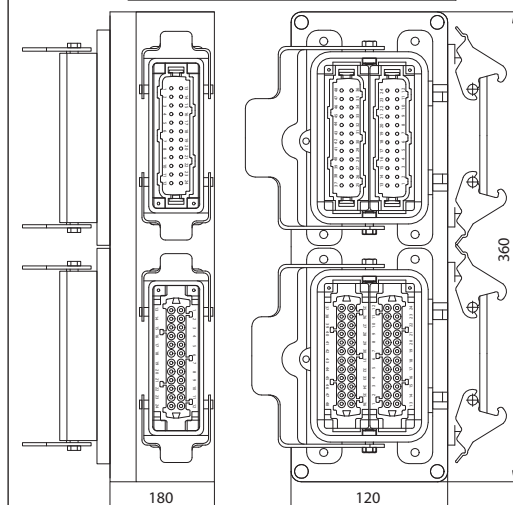
N. plug Menge	Q.ty poles Menge polig	code Code
n° 1	32 Male poles 32 Arretierstift	E05145
n° 1	32 female poles 32 Arretierhülse	
n° 1	24 Male poles 24 Arretierstift	



N. plug Menge	Q.ty poles Menge polig	code Code
n° 1	48 Male poles 48 Arretierstift	E05148
n° 1	48 female poles 48 Arretierhülse	
n° 1	24 Male poles 24 Arretierstift	



N. plug Menge	Q.ty poles Menge polig	code Code
n° 1	48 Male poles 48 Arretierstift	E05150
n° 1	48 female poles 48 Arretierhülse	
n° 1	24 Male poles 24 Arretierstift	
n° 1	24 female poles 24 Arretierhülse	





Qty / Menge	Code / Code	E05151
n°2	32 Female poles 32 Arretierhülse	
n°2	32 Male poles 32 Arretierstift	
n°1	24 Female poles 24 Arretierhülse	
n°1	24 Male poles 24 Arretierstift	

Qty / Menge	Code / Code	E05152
n°2	48 female poles 48 Arretierhülse	
n°2	48 male poles 48 Arretierstift	

Qty / Menge	Code / Code	E05155
n°2	48 Male poles 48 Arretierstift	
n°2	48 Female poles 48 Arretierhülse	
n°1	24 Male poles 24 Arretierstift	
n°1	24 Female poles 24 Arretierhülse	



ELECTRICAL CONNECTOR  
6 poles - 240V - 35A

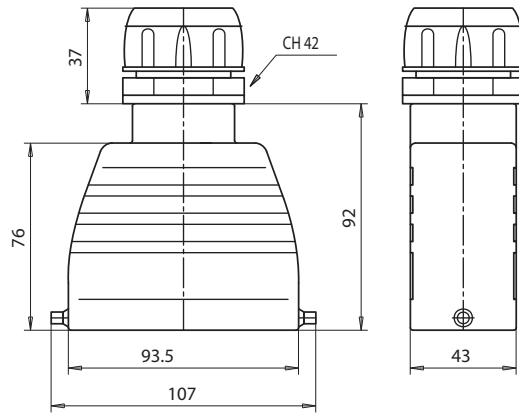
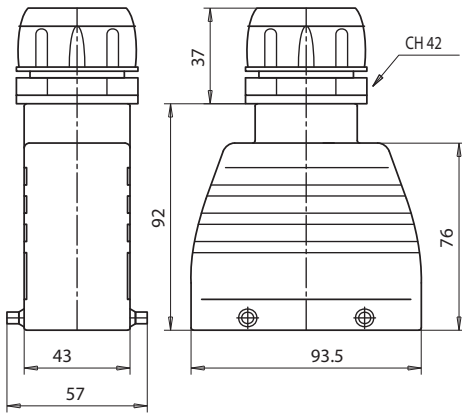
STECKVERBINDUNGEN  
6 polig - 240V - 35A

Cables  
min. 19  
max. 29  
Kabeldurchmesser  
min. 19  
max. 29

Code / Code E04238

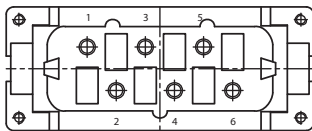
HOOD / GEHÄUSE

Code / Code E04239



RECEPTACLE / BUCHSE

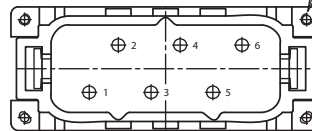
Code / Code E04213



Mounting screw  
Befestigungsschrauben

PLUG / STECKER

Code / Code E04212

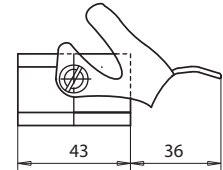
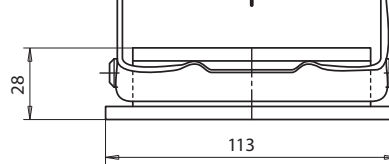
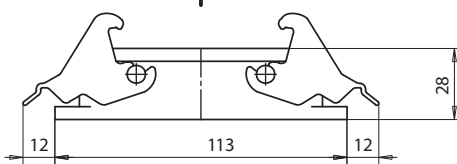
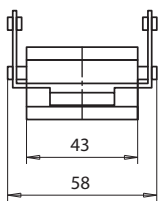


BASE / KUPPLUNG FÜR STECKERGEHÄUSE

Code / Code E04236

BASE / KUPPLUNG FÜR STECKERGEHÄUSE

Code / Code E04237



CODING PIN FEMALE  
ARRETIERHÜLSE

Code / Code E04254



Where several plugs are mounted adjacent to one another, substitute these pins to avoid errors.

Um fehlerhafte Montagen zu vermeiden sind ein Paar oder mehrere Arretierhülsen und-stifte zu montieren.

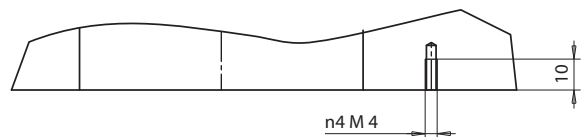
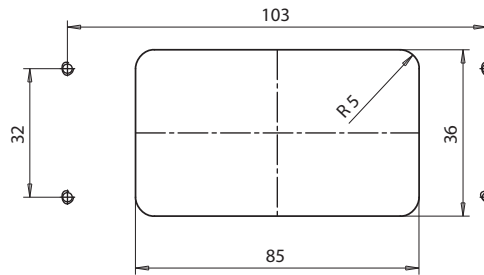


CODING PIN MALE  
ARRETIERSTIFT

Code / Code E04253

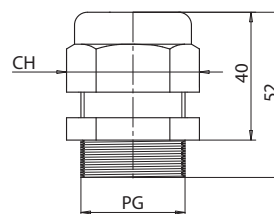
Layout to attach base to mold  
Montageskizze für Gehäuse auf dem Werkzeug

To mount base use n4 screws M4x12 UNI 5931  
Zur Befestigung des Gehäuses werden 4 Schrauben M4x12 UNI 5931 benötigt



STRAIN RELIEF FITTING / KUPPLUNG FÜR ZUGENTLASTUNG

Code / Code	Cables / Kabeldurchmesser		PG	CH
	min	max		
E11119	13	18	PG21	36
E11120	18	25	PG18	42





ELECTRICAL CONNECTOR  
10 poles - 240V - 16A

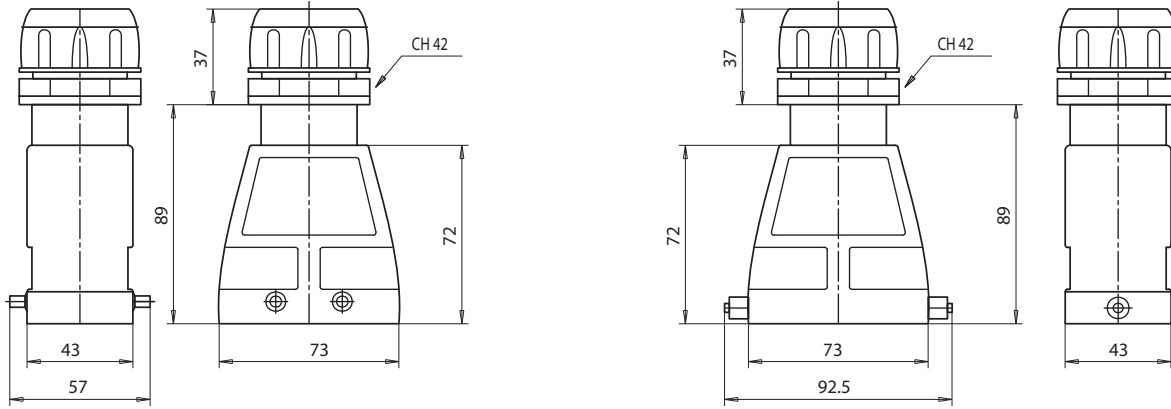
STECKVERBINDUNGEN  
10 polig - 240V - 16A

Cables  
min. 19  
max. 29  
Kabeldurchmesser  
min. 19  
max. 29

Code / Code E04232

HOOD / GEHÄUSE

Code / Code E04233

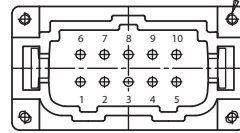
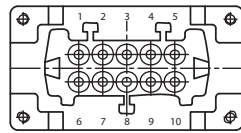


RECEPTACLE / BUCHSE

Code / Code E04215

BASE / KUPPLUNG FÜR STECKERGEHÄUSE

Code / Code E04230



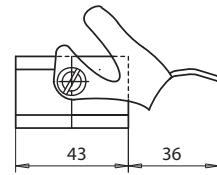
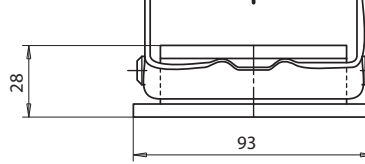
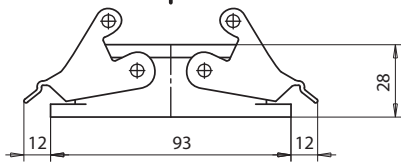
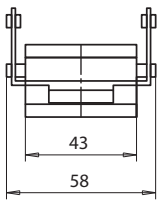
Mounting screw  
Befestigungsschrauben

PLUG / STECKER

Code / Code E04214

BASE / KUPPLUNG FÜR STECKERGEHÄUSE

Code / Code E04231



CODING PIN FEMALE  
ARRETIERHÜLSE

code / Code E04254



Where several plugs are mounted adjacent to one another, substitute these pins to avoid errors.

Um fehlerhafte Montagen zu vermeiden sind ein Paar oder mehrere Arretierhülsen und-stifte zu montieren.

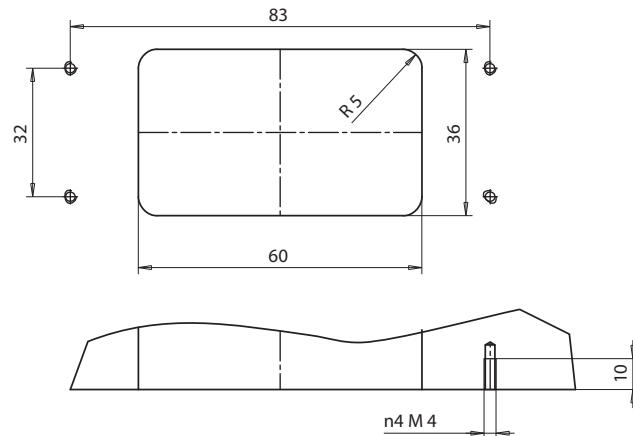


CODING PIN MALE  
ARRETIERHÜLSE

code / Code E04253

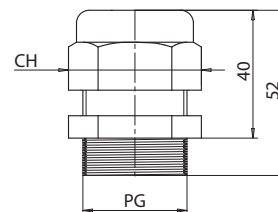
Layout to attach base to mold  
Montageskizze für Gehäuse auf dem Werkzeug

To mount base use n4 screws M4x12 UNI 5931  
Zur Befestigung des Gehäuses werden 4 Schrauben M4x12 UNI 5931 benötigt



STRAIN RELIEF FITTING / KUPPLUNG FÜR ZUGENTLASTUNG

Code / Code	Cables / Kabeldurchmesser		PG	CH
	min	max		
E11119	13	18	PG21	36
E11120	18	25	PG18	42





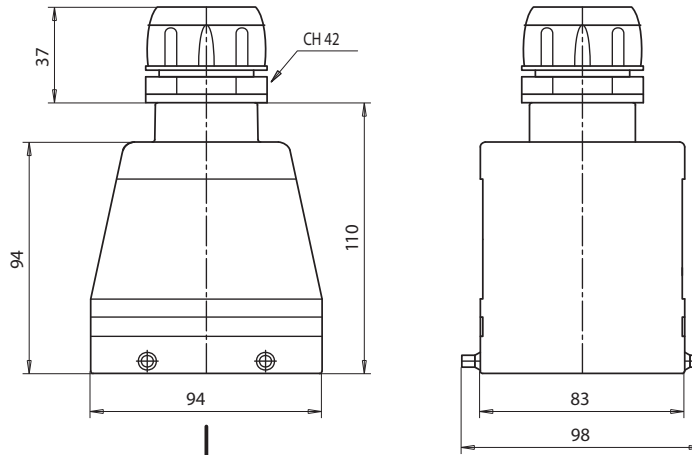
ELECTRICAL CONNECTOR  
12 poles - 240V - 35A

STECKVERBINDUNGEN  
12 polig - 240V - 35A

Cables  
min. 19  
max. 29  
Kabeldurchmesser  
min. 19  
max. 29

HOOD / GEHÄUSE

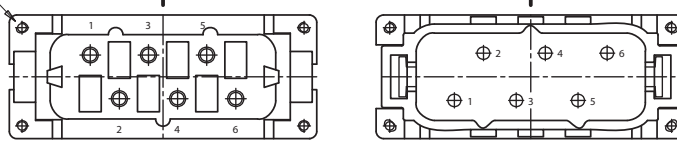
Code / Code	E04245
-------------	--------



Mounting screw  
Befestigungsschrauben

RECEPTACLE / BUCHSE

Code / Code	E04213
-------------	--------

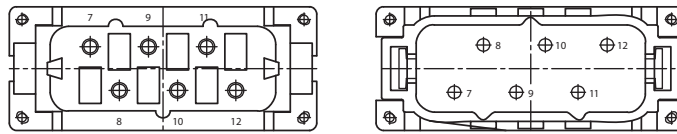


PLUG / STECKER

Code / Code	E04212
-------------	--------

RECEPTACLE / BUCHSE

Code / Code	E04217
-------------	--------

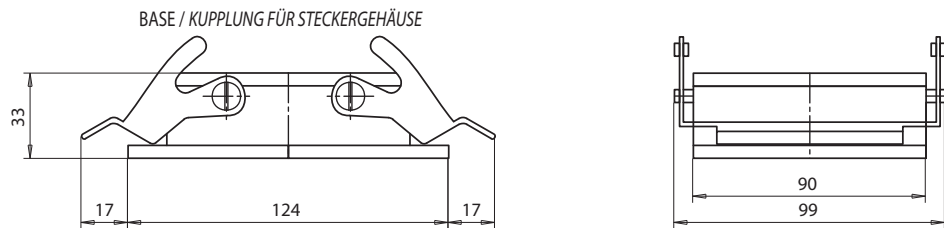


PLUG / STECKER

Code / Code	E04216
-------------	--------

BASE / KUPPLUNG FÜR STECKERGEHÄUSE

Code / Code	E04244
-------------	--------



CODING PIN FEMALE  
ARRETIERHÜLSE

Code / Code	E04254
-------------	--------



Where several plugs are mounted adjacent to one another, substitute these pins to avoid errors.

Um fehlerhafte Montagen zu vermeiden sind ein Paar oder mehrere Arretierhülsen und-stifte zu montieren.

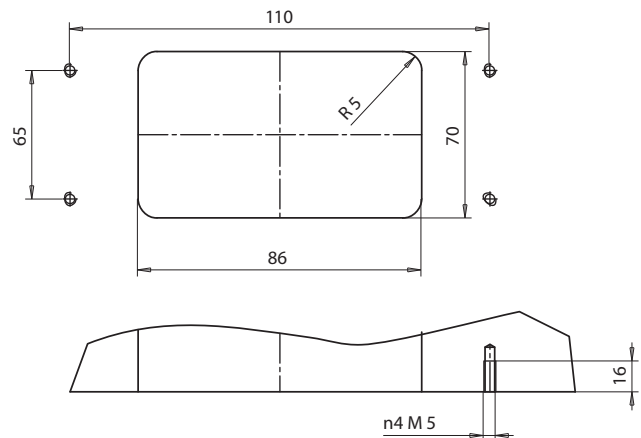


CODING PIN MALE  
ARRETIERHÜLSE

Code / Code	E04253
-------------	--------

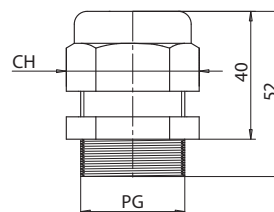
Layout to attach base to mold  
Montageskizze für Gehäuse auf dem Werkzeug

To mount base use n 4 screws M5x12 UNI 5931  
Zur Befestigung des Gehäuses werden 4 Schrauben M5x12 UNI 5931 benötigt



STRAIN RELIEF FITTING / KUPPLUNG FÜR ZUGENTLASTUNG

Code / Code	Cables / Kabeldurchmesser		PG	CH
	min	max		
E11119	13	18	PG21	36
E11120	18	25	PG18	42



# CONNECTORS / STECKVERBINDUNGEN



ELECTRICAL CONNECTOR  
16 poles - 240V - 16A

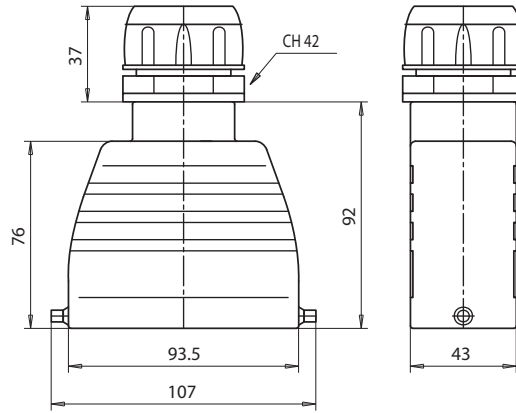
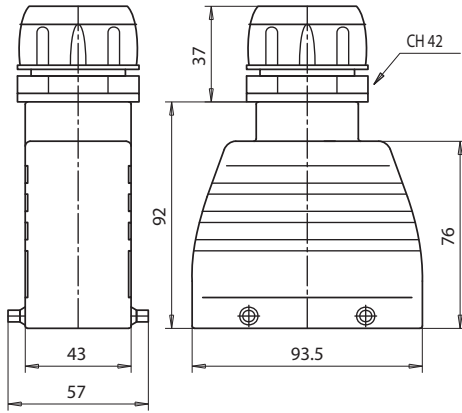
STECKVERBINDUNGEN  
16 polig - 240V - 16A

Cables  
min. 19  
max. 29  
Kabeldurchmesser  
min. 19  
max. 29

Code / Code E04238

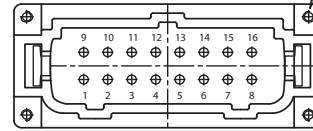
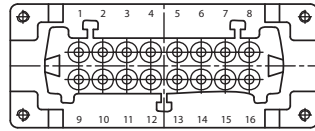
HOOD / GEHÄUSE

Code / Code E04239



RECEPTACLE / BUCHSE

Code / Code E04219



PLUG / STECKER

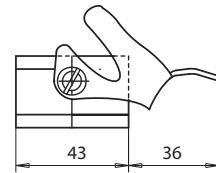
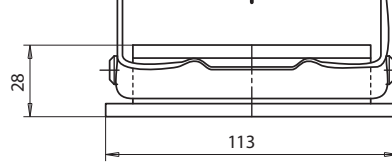
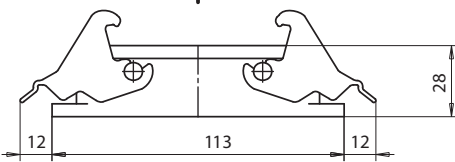
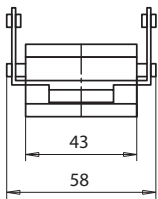
Code / Code E04218

BASE / KUPPLUNG FÜR STECKERGEHÄUSE

Code / Code E04236

BASE / KUPPLUNG FÜR STECKERGEHÄUSE

Code / Code E04237



Mounting screw  
Befestigungsschrauben

BASE / KUPPLUNG FÜR STECKERGEHÄUSE

CODING PIN FEMALE  
ARRETIERHÜLSE

Code / Code E04254



Where several plugs are mounted adjacent to one another, substitute these pins to avoid errors.  
Um fehlerhafte Montagen zu vermeiden sind ein Paar oder mehrere Arretierhülsen und -stifte zu montieren.

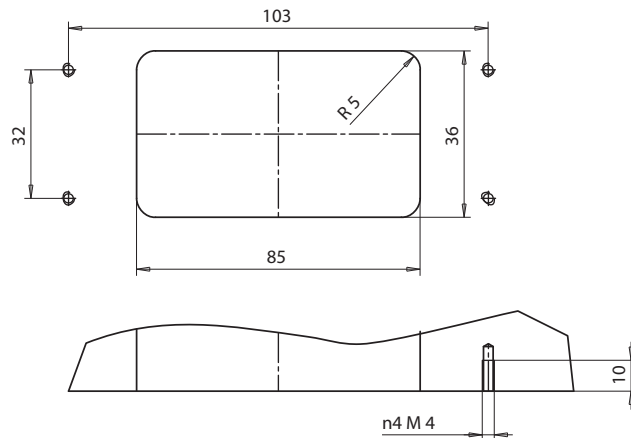


CODING PIN MALE  
ARRETIERHÜLSE

Code / Code E04253

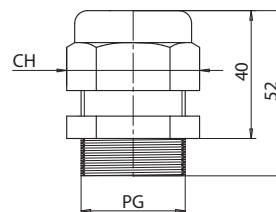
Layout to attach base to mold  
Montageskizze für Gehäuse auf dem Werkzeug

To mount base use n 4 screws M4x12 UNI 5931  
Zur Befestigung des Gehäuses werden 4 Schrauben M4x12 UNI 5931 benötigt



STRAIN RELIEF FITTING / KUPPLUNG FÜR ZUGENTLASTUNG

Code / Code	Cables / Kabeldurchmesser		PG	CH
	min	max		
E11119	13	18	PG21	36
E11120	18	25	PG18	42





ELECTRICAL CONNECTOR  
24 poles - 240V - 16A

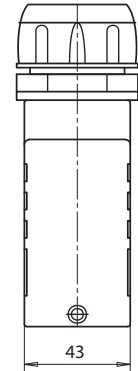
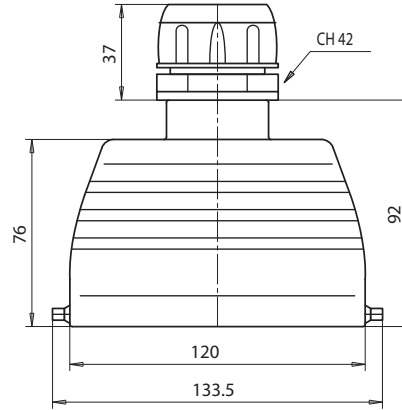
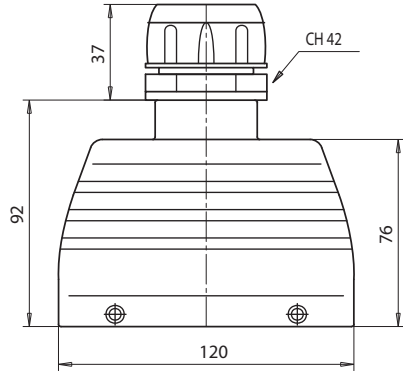
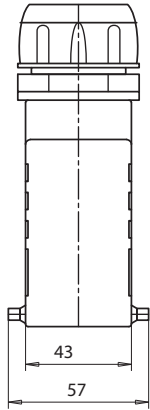
STECKVERBINDUNGEN  
24 polig - 240V - 16A

Cables  
min. 19  
max. 29  
Kabeldurchmesser  
min. 19  
max. 29

Code / Code E04242

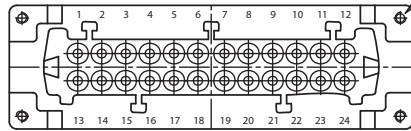
HOOD / GEHÄUSE

Code / Code E04243

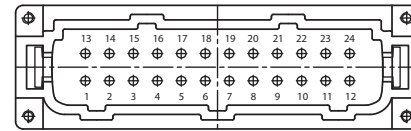


RECEPTACLE / BUCHSE

Code / Code E04221



Mounting screw  
Befestigungsschrauben

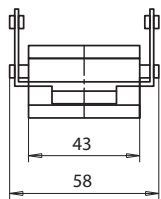


PLUG / STECKER

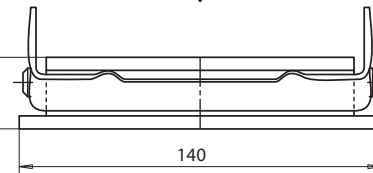
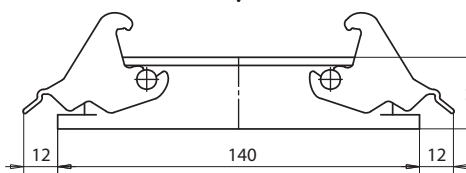
Code / Code E04220

BASE / KUPPLUNG FÜR STECKERGEHÄUSE

Code / Code E04240

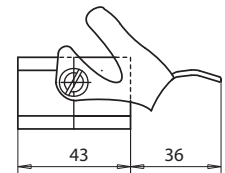


BASE / KUPPLUNG FÜR STECKERGEHÄUSE



BASE / KUPPLUNG FÜR STECKERGEHÄUSE

Code / Code E04241



CODING PIN FEMALE  
ARRETIERHÜLSE

Code / Code E04254



Where several plugs are mounted adjacent to one another, substitute these pins to avoid errors.

Um fehlerhafte Montagen zu vermeiden sind ein Paar oder mehrere Arretierhülsen und -stifte zu montieren.

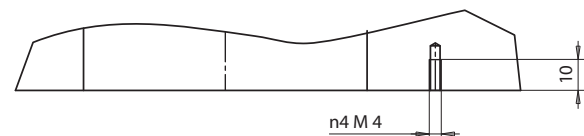
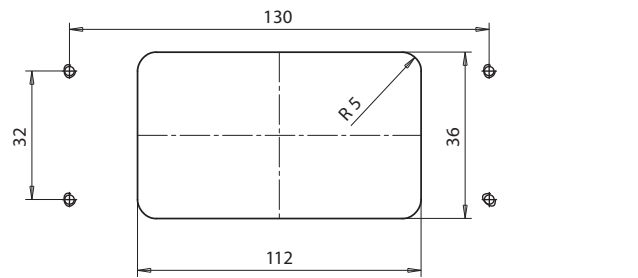


CODING PIN MALE  
ARRETIERHÜLSE

Code / Code E04253

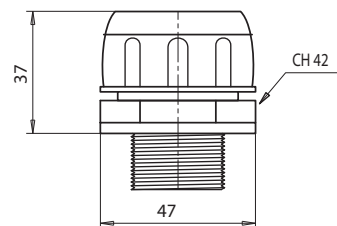
Layout to attach base to mold  
Montageskizze für Gehäuse auf dem Werkzeug

To mount base use n 4 screws M4x12 UNI 5931  
Zur Befestigung des Gehäuses werden 4 Schrauben M4x12 UNI 5931 benötigt



STRAIN RELIEF FITTING / KUPPLUNG FÜR ZUGENTLASTUNG

Code / Code E04252



Cables  
min. 19  
max. 29  
Kabeldurchmesser  
min. 19  
max. 29



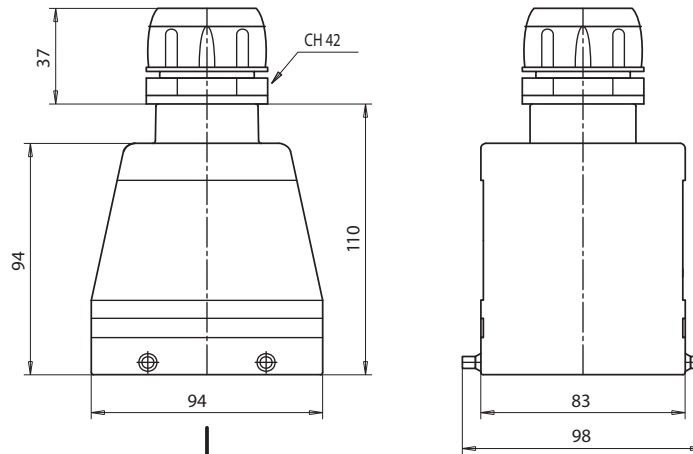
ELECTRICAL CONNECTOR  
32 poles - 240V - 16A

STECKVERBINDUNGEN  
32 poli - 240V - 16A

Cables  
min. 19  
max. 29  
Kabeldurchmesser  
min. 19  
max. 29

HOOD / GEHÄUSE

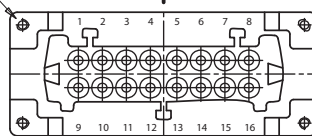
Code / Code E04245



Mounting screw  
Befestigungsschrauben

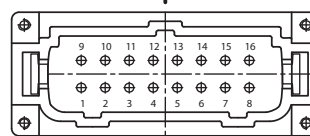
RECEPTACLE / BUCHSE

Code / Code E04219



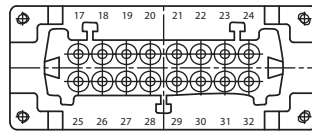
PLUG / STECKER

Code / Code E04218



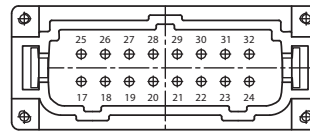
RECEPTACLE / BUCHSE

Code / Code E05142



PLUG / STECKER

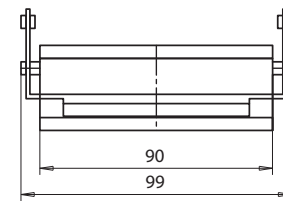
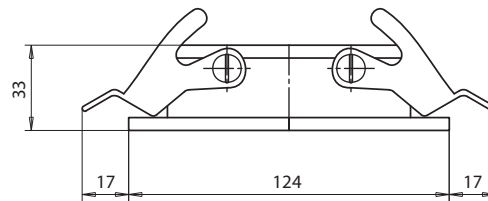
Code / Code E05141



BASE / KUPPLUNG FÜR STECKERGEHÄUSE

BASE / KUPPLUNG FÜR STECKERGEHÄUSE

Code / Code E04244



CODING PIN FEMALE  
ARRETIERHÜLSE

Code / Code E04254



Where several plugs are mounted adjacent to one another, substitute these pins to avoid errors.

Um fehlerhafte Montagen zu vermeiden sind ein Paar oder mehrere Arretierhülsen und-stifte zu montieren.

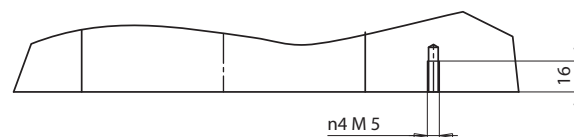
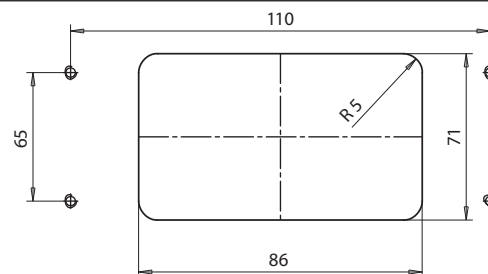


CODING PIN MALE  
ARRETIERHÜLSE

Code / Code E04253

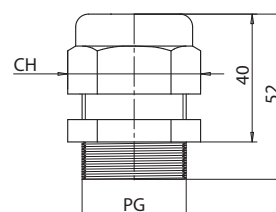
Layout to attach base to mold  
Montageskizze für Gehäuse auf dem Werkzeug

To mount base use n 4 screws M5x12 UNI 5931  
Zur Befestigung des Gehäuses werden 4 Schrauben M5x12 UNI 5931 benötigt



STRAIN RELIEF FITTING / KUPPLUNG FÜR ZUGENTLASTUNG

Code / Code	Cables / Kabeldurchmesser		PG	CH
	min	max		
E11119	13	18	PG21	36
E11120	18	25	PG18	42



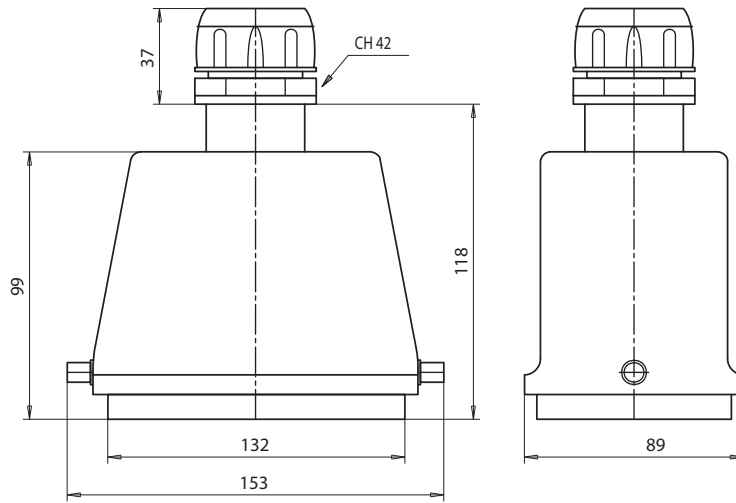




ELECTRICAL CONNECTOR  
48 poles - 240V - 16A

STECKVERBINDUNGEN  
48 polig - 240V - 16A

Code / Code E04247



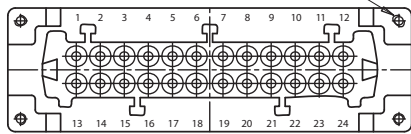
Cables  
min. 19  
max. 29

Kabeldurchmesser  
min. 19  
max. 29

Mounting screw  
Befestigungsschrauben

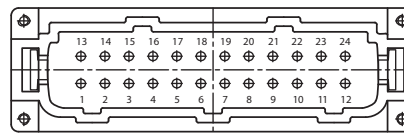
RECEPTACLE / BUCHSE

Code / Code E04221



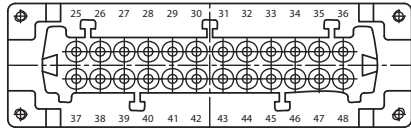
PLUG / STECKER

Code / Code E04220



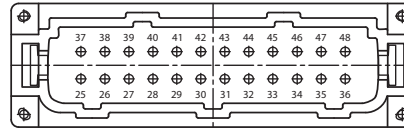
RECEPTACLE / BUCHSE

Code / Code E05147



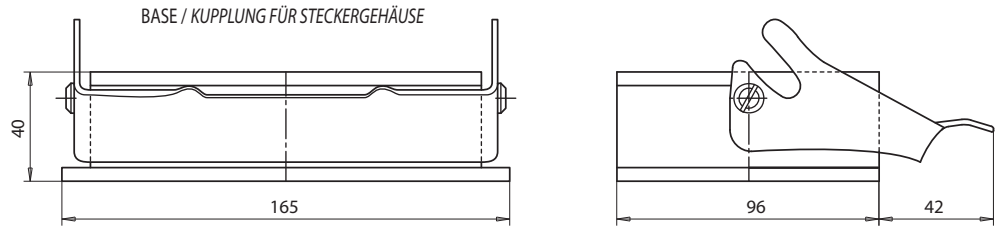
PLUG / STECKER

Code / Code E05146



BASE / KUPPLUNG FÜR STECKERGEHÄUSE

Code / Code E04246



CODING PIN FEMALE  
ARRETIERHÜLSE

Code / Code E04254



Where several plugs are mounted adjacent to one another, substitute these pins to avoid errors.

Um fehlerhafte Montagen zu vermeiden sind ein Paar oder mehrere Arretierhülsen und-stifte zu montieren.



CODING PIN MALE  
ARRETIERHÜLSE

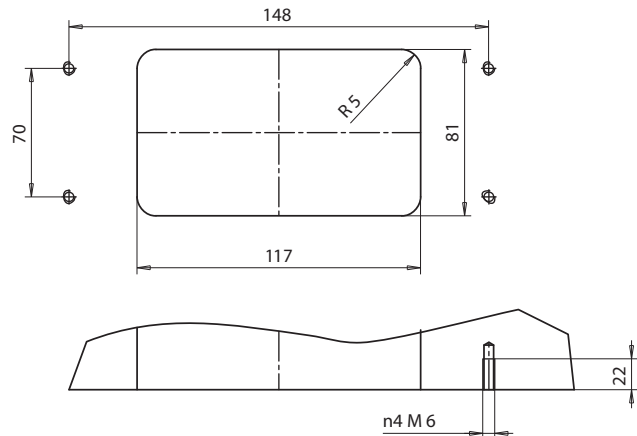
Code / Code E04253

Layout to attach base to mold

Montageskizze für Gehäuse auf dem Werkzeug

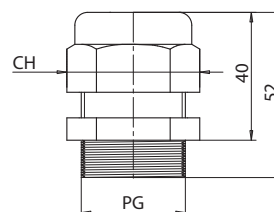
To mount base use n 4 screws M6x12 UNI 5931

Zur Befestigung des Gehäuses werden 4 Schrauben M6x12 UNI 5931 benötigt



STRAIN RELIEF FITTING / KUPPLUNG FÜR ZUGENTLASTUNG

Code / Code	Cables / Kabeldurchmesser		PG	CH
	min	max		
E11119	13	18	PG21	36
E11120	18	25	PG18	42

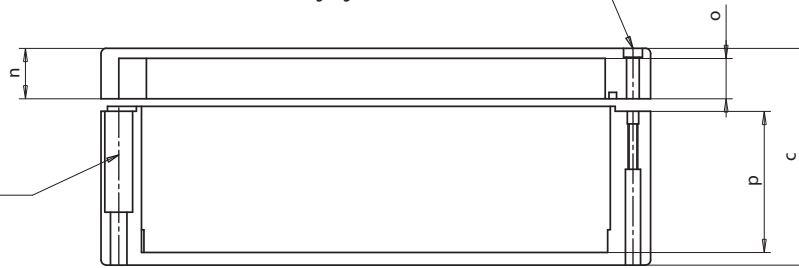




TERMINAL MOUNTING BOX / ANSCHLUSSKASTEN

Material / Material Aluminium / Aluminium

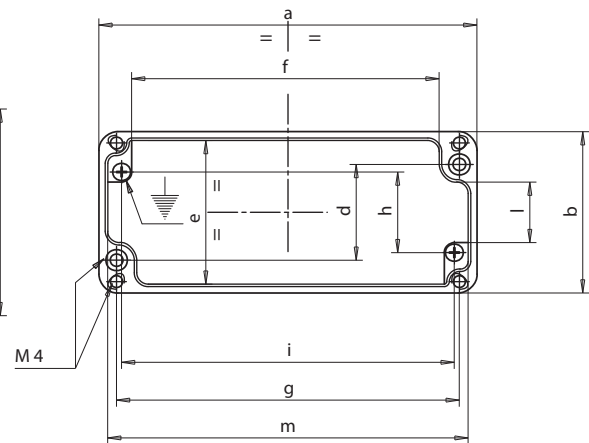
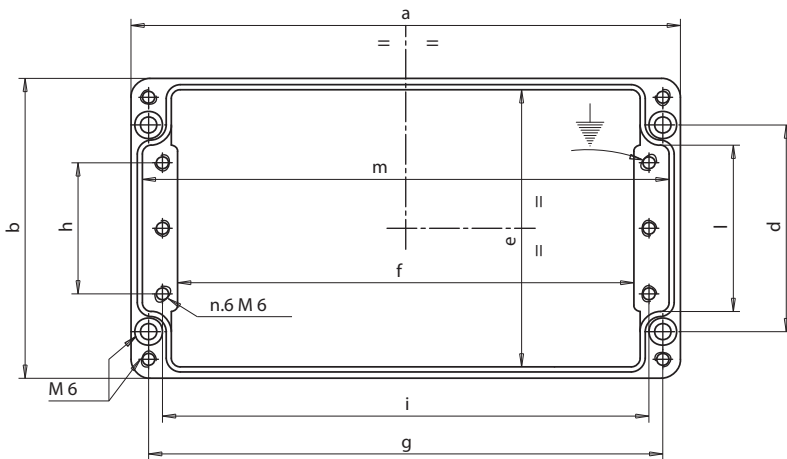
Screw hole M4/M6 to mount cover  
Schraubenbefestigung M4/M6



Screw hole M4/M6 to mount terminal box  
Schraubenbefestigung für Anschlußbox M4/M6

Type / Typ A

Type / Typ B



Code	Type / Typ	a	b	c	d	e	f	g	h	i	l	m	n	o	p
E04384	A	360	120	80	82	111	328	344	52	333	66	351	20	16.5	56.5
E04385		220					188	204		193		211			
E04386		160	160	90	110	151	120	140	76	130	90	151			
E05144		360					320	340		330	351				
E05153		330	230	180	181	221	290	310	144	300	160	318			
E04387	B	250	80	52	52	72	224	238	48	230	40	242	12	8.5	36.5
E04388		150	64	34	36	56	126	138	32	132	24	142	9	5.5	21.5
E05127		175	80	57	52	72	147	163	30	156	50	167	15	11.5	38.5

APPLICATION EXAMPLES OF TERMINAL MOUNTING BOX / BEISPIEL FÜR ANSCHLUSSKASTEN

