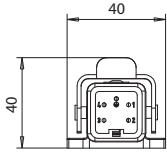




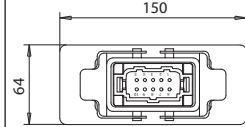
Composed by: cover, receptacle and strain relief.
Composto da: custodia, frutto e pressacavo.

Diagram of connectors assemblies composed by: cover, box and receptacle.
Schema riassuntivo dei set di connessioni composti da: custodia, scatola e frutto.

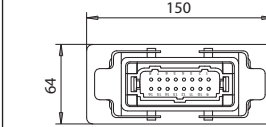
N. plug N prese	Q.ty poles Q.tà poli	code Codice
n° 1	4 Male poles 4 poli maschio	E16833



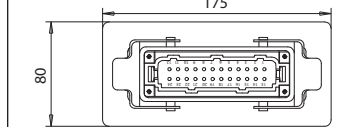
N. plug N prese	Q.ty poles Q.tà poli	code Codice
n° 1	10 female poles 10 poli femmina	E15761
n° 1	10 Male poles 10 poli maschio	E05128



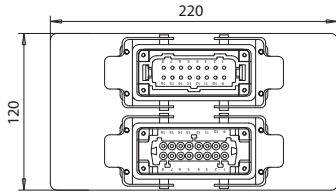
N. plug N prese	Q.ty poles Q.tà poli	code Codice
n° 1	16 female poles 16 poli femmina	E09509
n° 1	16 Male poles 16 poli maschio	E05129



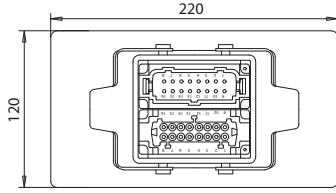
N. plug N prese	Q.ty poles Q.tà poli	code Codice
n° 1	24 female poles 24 poli femmina	E09510
n° 1	24 Male poles 24 poli maschio	E05131



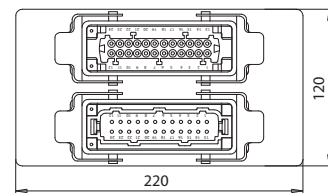
N. plug N prese	Q.ty poles Q.tà poli	code Codice
n° 1	16 female poles 16 poli femmina	E08102
n° 1	16 Male poles 16 poli maschio	



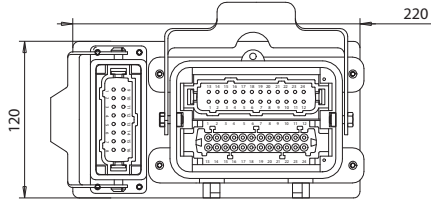
N. plug N prese	Q.ty poles Q.tà poli	code Codice
n° 1	16 female poles 16 poli femmina + 16 Male poles 16 poli maschio	E05134



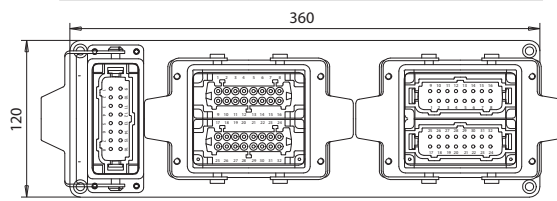
N. plug N prese	Q.ty poles Q.tà poli	code Codice
n° 1	24 female poles 24 poli femmina	E05137
n° 1	24 Male poles 24 poli maschio	



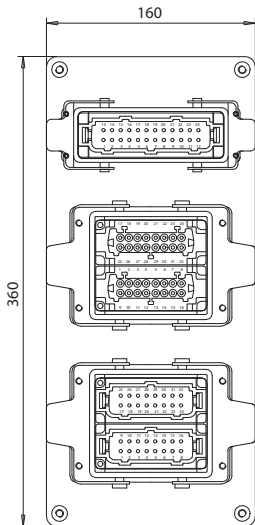
N. plug N prese	Q.ty poles / Q.tà poli		code Codice
n° 1	24 female poles	24 poli femmina+	E05140
	24 Male poles	24 poli maschio	
n° 1	16 Male poles	16 poli maschio	



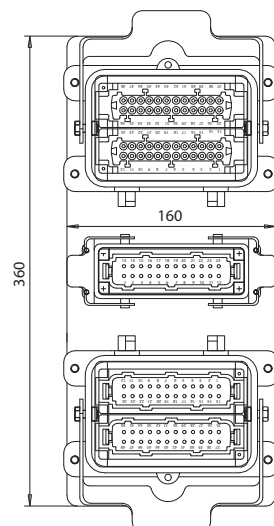
N. plug N prese	Q.ty poles / Q.tà poli		code Codice
n° 1	32 female poles	32 poli femmina	E05143
n° 1	32 Male poles	32 poli maschio	
n° 1	16 Male poles	16 poli maschio	



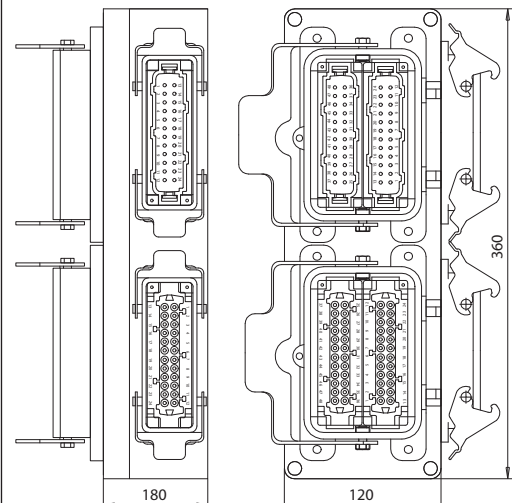
N. plug N prese	Q.ty poles Q.tà poli	code Codice
n° 1	32 Male poles 32 poli maschio	E05145
n° 1	32 female poles 32 poli femmina	
n° 1	24 Male poles 24 poli maschio	



N. plug N prese	Q.ty poles Q.tà poli	code Codice
n° 1	48 Male poles 48 poli maschio	E05148
n° 1	48 female poles 48 poli femmina	
n° 1	24 Male poles 24 poli maschio	



N. plug N prese	Q.ty poles Q.tà poli	code Codice
n° 1	48 Male poles 48 poli maschio	E05150
n° 1	48 female poles 48 poli femmina	
n° 1	24 Male poles 24 poli maschio	
n° 1	24 female poles 24 poli femmina	





Qty / Q.tà	code / Codice	E05151
n°2	32 Female poles 32 poli femmina	
n°2	32 Male poles 32 poli maschio	
n°1	24 Female poles 24 poli femmina	
n°1	24 Male poles 24 poli maschio	

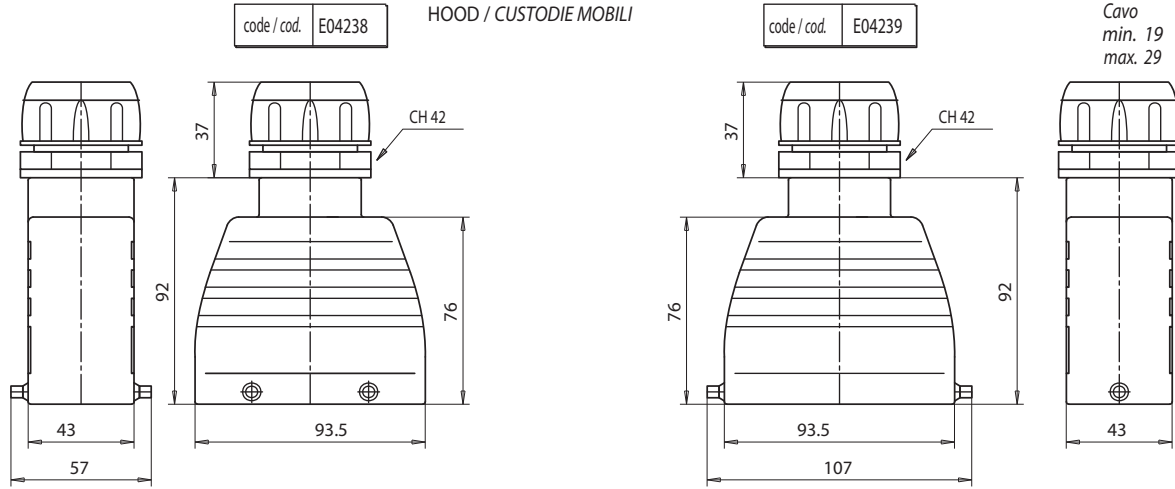
Qty / Q.tà	code / Codice	E05152
n°2	48 female poles 48 poli femmina	
n°2	48 male poles 48 poli maschio	

Qty / Q.tà	code / Codice	E05155
n°2	48 Male poles 48 poli maschio	
n°2	48 Female poles 48 poli femmina	
n°1	24 Male poles 24 poli maschio	
n°1	24 Female poles 24 poli femmina	



ELECTRICAL CONNECTOR CONNESSIONI ELETTRICHE
6 poles - 240V - 35A 6 poli - 240V - 35A

Cables
min. 19
max. 29
Cavo
min. 19
max. 29

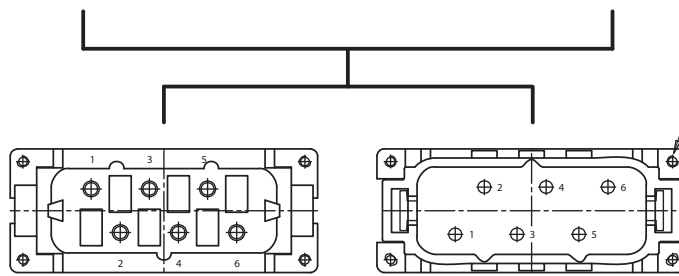
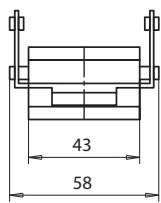


RECEPTACLE / FRUTTO FEMMINA

code / cod. E04213

BASE / CUSTODIA FISSA

code / cod. E04236

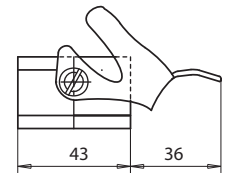
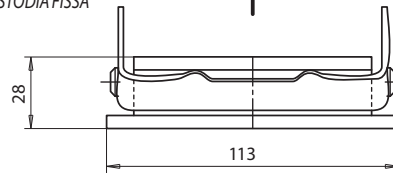


PLUG / FRUTTO MASCHIO

code / cod. E04212

BASE / CUSTODIA FISSA

code / cod. E04237



CODING PIN FEMALE
PERNO ORIENTAMENTO FEMMINA

code / cod. E04254



Where several plugs are mounted adjacent to one another, substitute these pins to avoid errors.

Sostituire alle viti di fissaggio frutto uno o più perni di orientamento maschio e femmina per evitare montaggi errati.

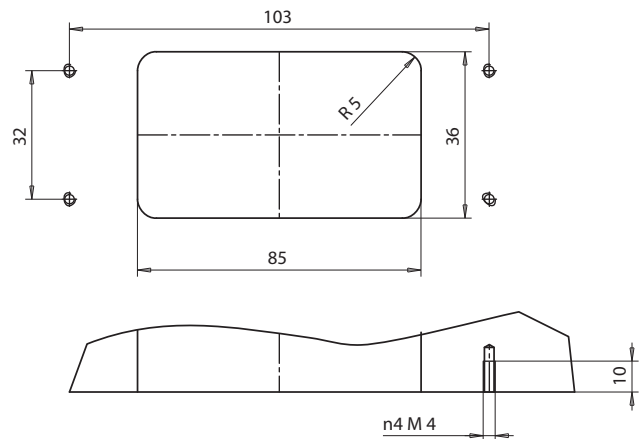


CODING PIN MALE
PERNO ORIENTAMENTO MASCHIO

code / cod. E04253

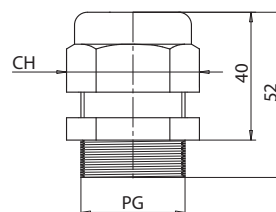
Layout to attach base to mold
Schema per sede custodia fissa da eseguire sullo stampo

To mount base use n4 screws M4x12 UNI 5931
Per il fissaggio delle custodie utilizzare n4 M4x12 UNI 5931



STRAIN RELIEF FITTING / PRESSACAVO DI RICAMBIO

code / cod.	Cables / Cavo		PG	CH
	min	max		
E11119	13	18	PG21	36
E11120	18	25	PG18	42





ELECTRICAL CONNECTOR
10 poles - 240V - 16A

CONNESSIONI ELETTRICHE
10 poli - 240V - 16A

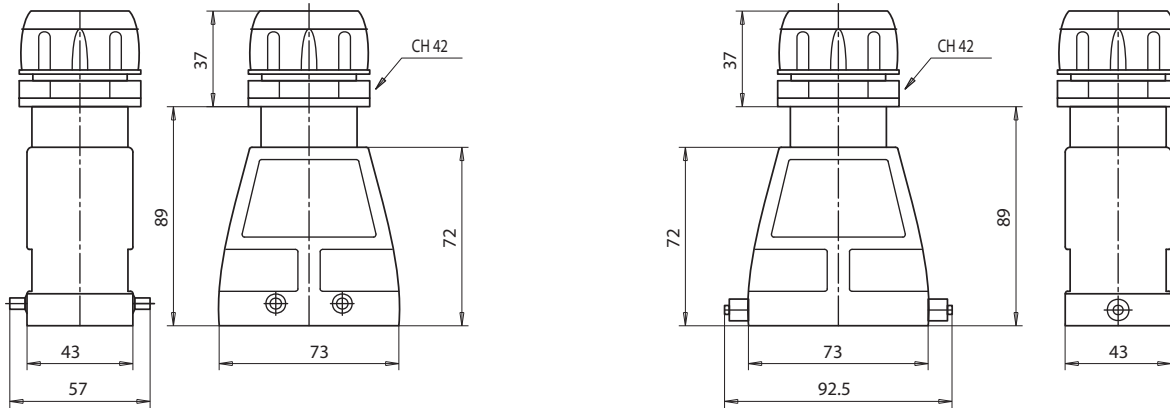
Cables
min. 19
max. 29

Cavo
min. 19
max. 29

code / cod. E04232

HOOD / CUSTODIE MOBILI

code / cod. E04233

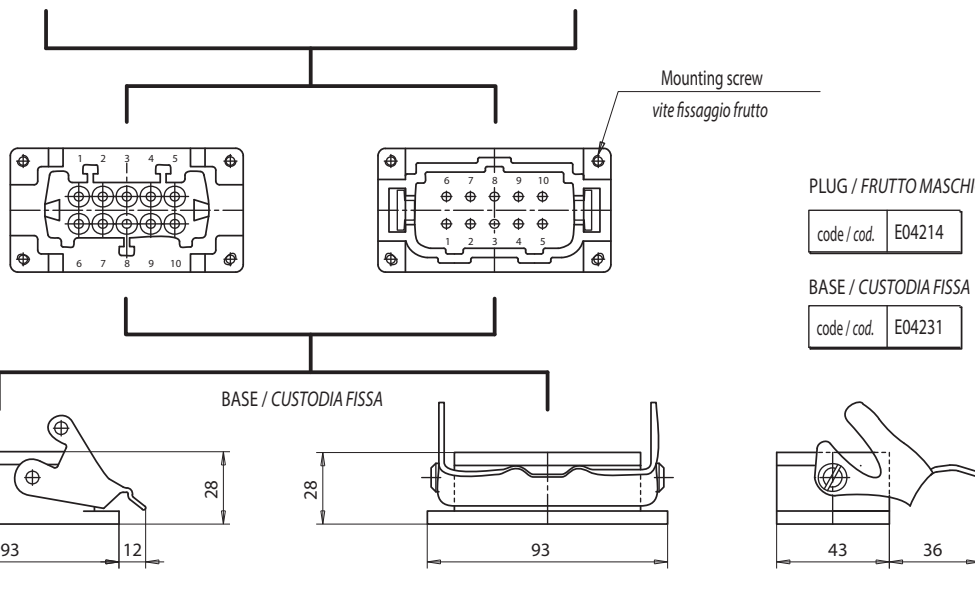


RECEPTACLE / FRUTTO FEMMINA

code / cod. E04215

BASE / CUSTODIA FISSA

code / cod. E04230



PLUG / FRUTTO MASCHIO

code / cod. E04214

BASE / CUSTODIA FISSA

code / cod. E04231

CODING PIN FEMALE
PERNO ORIENTAMENTO FEMMINA

code / cod. E04254



Where several plugs are mounted adjacent to one another, substitute these pins to avoid errors.

Sostituire alle viti di fissaggio frutto uno o più perni di orientamento maschio e femmina per evitare montaggi errati.

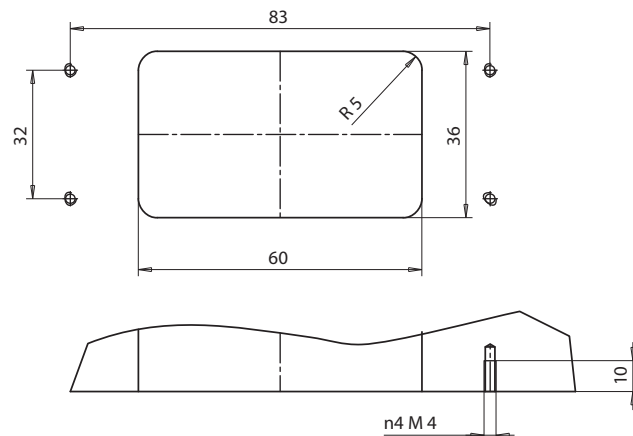


CODING PIN MALE
PERNO ORIENTAMENTO MASCHIO

code / cod. E04253

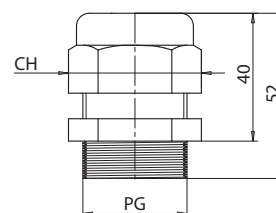
Layout to attach base to mold
Schema per sede custodia fissa da eseguire sullo stampo

To mount base use n4 screws M4x12 UNI 5931
Per il fissaggio delle custodie utilizzare n4 M4x12 UNI 5931



STRAIN RELIEF FITTING / PRESSACAVO DI RICAMBIO

code / cod.	Cables / Cavo		PG	CH
	min	max		
E11119	13	18	PG21	36
E11120	18	25	PG18	42





ELECTRICAL CONNECTOR
12 poles - 240V - 35A

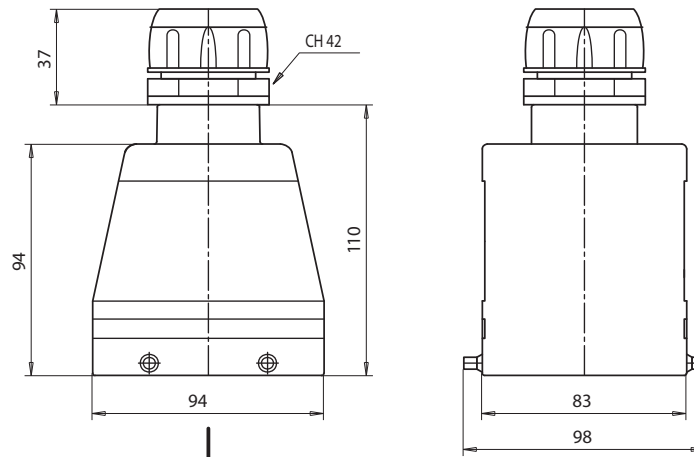
CONNESSIONI ELETTRICHE
12 poli - 240V - 35A

Cables
min. 19
max. 29

Cavo
min. 19
max. 29

HOOD / CUSTODIE MOBILI

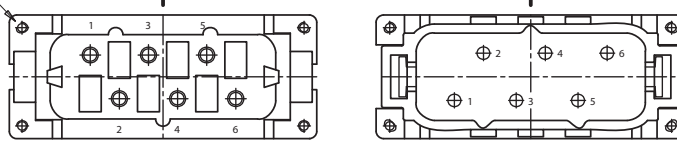
code / cod. E04245



Mounting screw
vite fissaggio frutto

RECEPTACLE / FRUTTO FEMMINA

code / cod. E04213

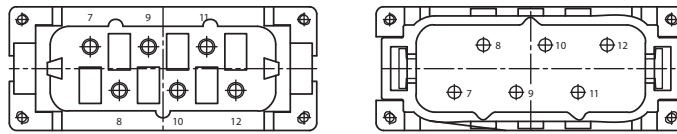


PLUG / FRUTTO MASCHIO

code / cod. E04212

RECEPTACLE / FRUTTO FEMMINA

code / cod. E04217

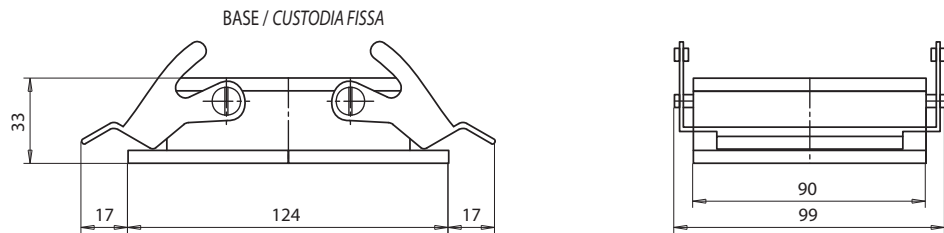


PLUG / FRUTTO MASCHIO

code / cod. E04216

BASE / CUSTODIA FISSA

code / cod. E04244



CODING PIN FEMALE
PERNO ORIENTAMENTO FEMMINA

code / cod. E04254



Where several plugs are mounted adjacent to one another, substitute these pins to avoid errors.

Sostituire alle viti di fissaggio frutto uno o più perni di orientamento maschio e femmina per evitare montaggi errati.

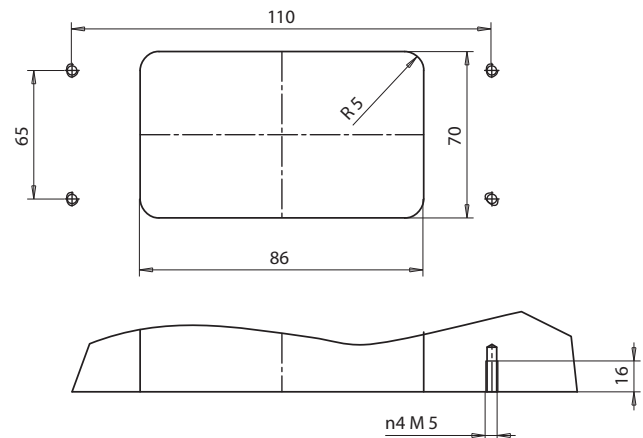


CODING PIN MALE
PERNO ORIENTAMENTO MASCHIO

code / cod. E04253

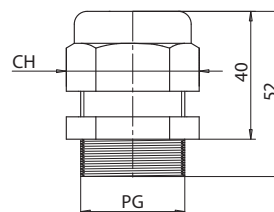
Layout to attach base to mold
Schema per sede custodia fissa da eseguire sullo stampo

To mount base use n 4 screws M5x12 UNI 5931
Per il fissaggio delle custodie utilizzare n4 M5x12 UNI 5931



STRAIN RELIEF FITTING / PRESSACAVO DI RICAMBIO

code / cod.	Cables / Cavo		PG	CH
	min	max		
E11119	13	18	PG21	36
E11120	18	25	PG18	42





ELECTRICAL CONNECTOR
16 poles - 240V - 16A

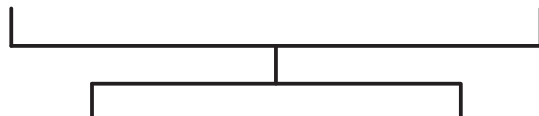
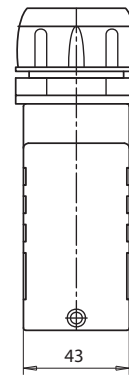
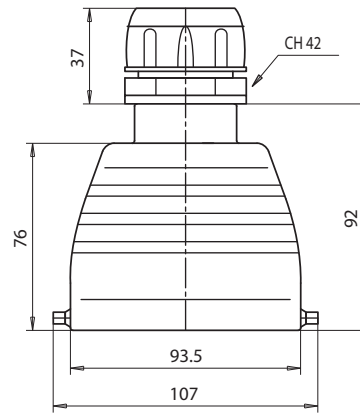
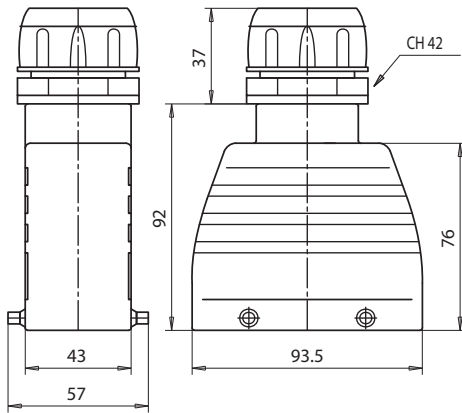
CONNESSIONI ELETTRICHE
16 poli - 240V - 16A

Cables
min. 19
max. 29
Cavo
min. 19
max. 29

code / cod. E04238

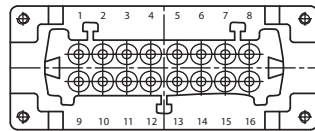
HOOD / CUSTODIE MOBILI

code / cod. E04239

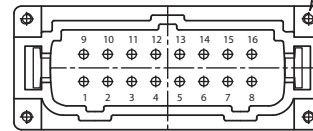


RECEPTACLE / FRUTTO FEMMINA

code / cod. E04219



Mounting screw
vite fissaggio frutto



PLUG / FRUTTO MASCHIO

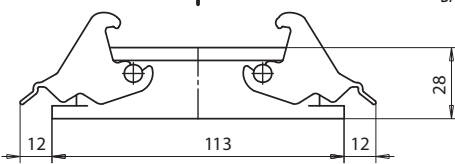
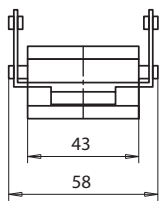
code / cod. E04218

BASE / CUSTODIA FISSA

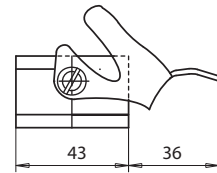
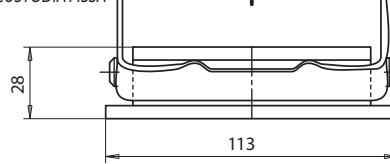
code / cod. E04236

BASE / CUSTODIA FISSA

code / cod. E04237



BASE / CUSTODIA FISSA



CODING PIN FEMALE
PERNO ORIENTAMENTO FEMMINA

code / cod. E04254



Where several plugs are mounted adjacent to one another, substitute these pins to avoid errors.

Sostituire alle viti di fissaggio frutto uno o più perni di orientamento maschio e femmina per evitare montaggi errati.

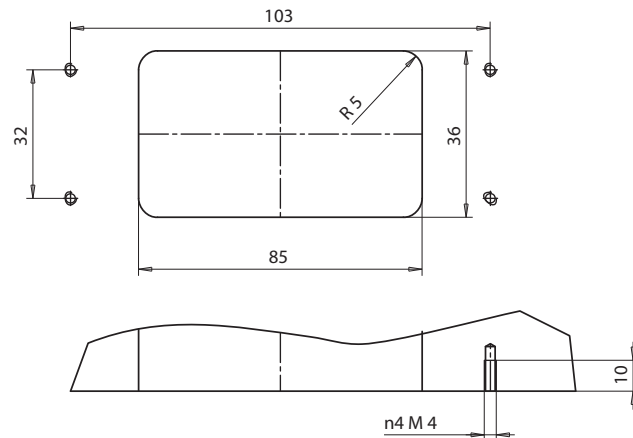


CODING PIN MALE
PERNO ORIENTAMENTO MASCHIO

code / cod. E04253

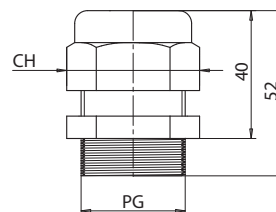
Layout to attach base to mold
Schema per sede custodia fissa da eseguire sullo stampo

To mount base use n 4 screws M4x12 UNI 5931
Per il fissaggio delle custodie utilizzare n4 M5x12 UNI 5931



STRAIN RELIEF FITTING / PRESSACAPO DI RICAMBIO

code / cod.	Cables / Cavo		PG	CH
	min	max		
E11119	13	18	PG21	36
E11120	18	25	PG18	42



CONNECTORS / SET DI CONNESSIONI



ELECTRICAL CONNECTOR
24 poles - 240V - 16A

CONNESSIONI ELETTRICHE
24 poli - 240V - 16A

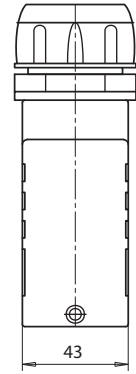
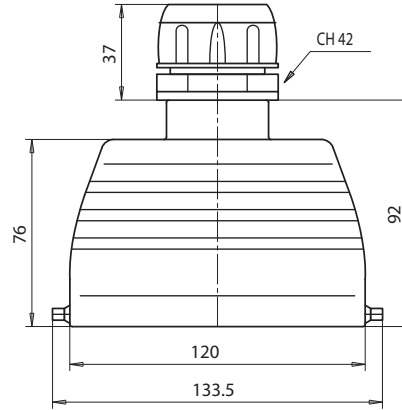
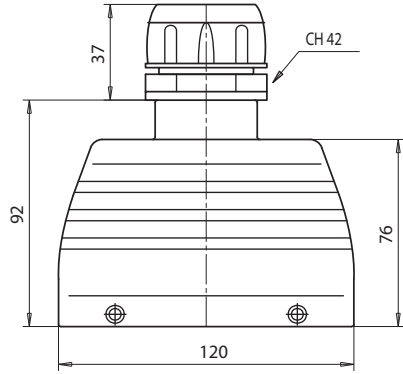
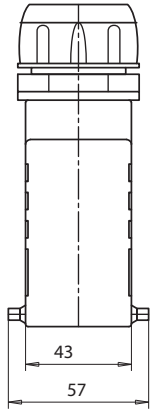
Cables
min. 19
max. 29

Cavo
min. 19
max. 29

code / cod. E04242

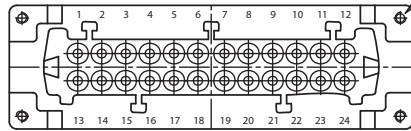
HOOD / CUSTODIE MOBILI

code / cod. E04243



RECEPTACLE / FRUTTO FEMMINA

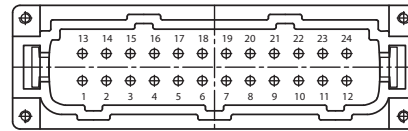
code / cod. E04221



Mounting screw
vite fissaggio frutto

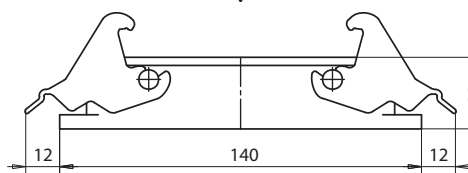
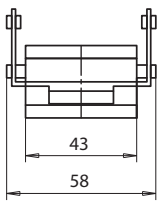
PLUG / FRUTTO MASCHIO

code / cod. E04220

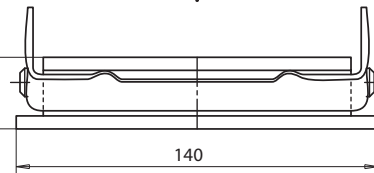


BASE / CUSTODIA FISSA

code / cod. E04240

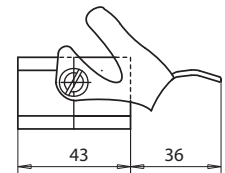


BASE / CUSTODIA FISSA



BASE / CUSTODIA FISSA

code / cod. E04241



CODING PIN FEMALE
PERNO ORIENTAMENTO FEMMINA

code / cod. E04254



Where several plugs are mounted adjacent to one another, substitute these pins to avoid errors.

Sostituire alle viti di fissaggio frutto uno o più perni di orientamento maschio e femmina per evitare montaggi errati.

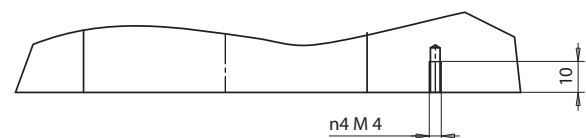
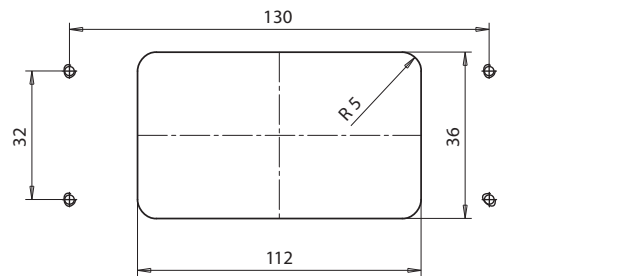


CODING PIN MALE
PERNO ORIENTAMENTO MASCHIO

code / cod. E04253

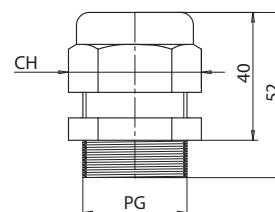
Layout to attach base to mold
Schema per sede custodia fissa da eseguire sullo stampo

To mount base use n 4 screws M4x12 UNI 5931
Per il fissaggio delle custodie utilizzare n4 M4x12 UNI 5931



STRAIN RELIEF FITTING / PRESSACAVO DI RICAMBIO

code / cod.	Cables / Cavo		PG	CH
	min	max		
E11119	13	18	PG21	36
E11120	18	25	PG18	42



CONNECTORS / SET DI CONNESSIONI



ELECTRICAL CONNECTOR
32 poles - 240V - 16A

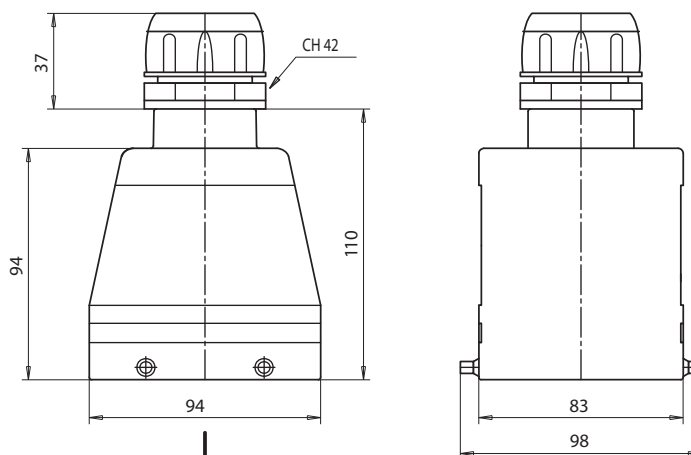
CONNESSIONI ELETTRICHE
32 poli - 240V - 16A

Cables
min. 19
max. 29

Cavo
min. 19
max. 29

HOOD / CUSTODIE MOBILI

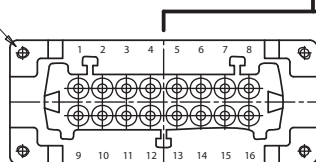
code / cod. E04245



Mounting screw
vite fissaggio frutto

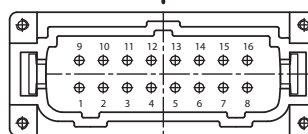
RECEPTACLE / FRUTTO FEMMINA

code / cod. E04219



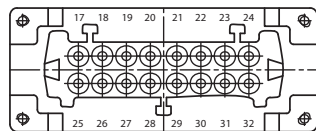
PLUG / FRUTTO MASCHIO

code / cod. E04218



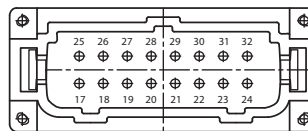
RECEPTACLE / FRUTTO FEMMINA

code / cod. E05142



PLUG / FRUTTO MASCHIO

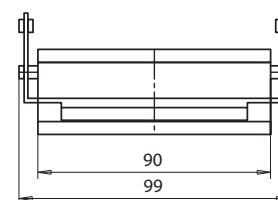
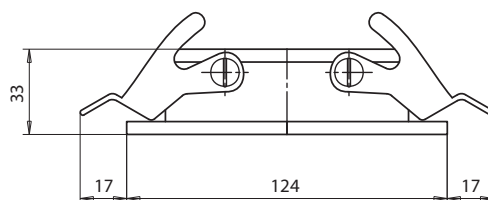
code / cod. E05141



BASE / CUSTODIA FISSA

BASE / CUSTODIA FISSA

code / cod. E04244



CODING PIN FEMALE
PERNO ORIENTAMENTO FEMMINA

code / cod. E04254



Where several plugs are mounted adjacent to one another, substitute these pins to avoid errors.

Sostituire alle viti di fissaggio frutto uno o più perni di orientamento maschio e femmina per evitare montaggi errati.

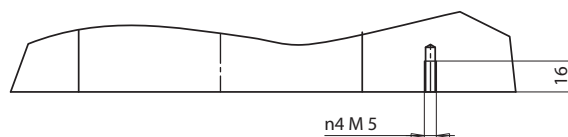
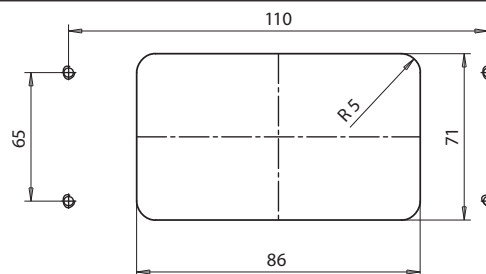


CODING PIN MALE
PERNO ORIENTAMENTO MASCHIO

code / cod. E04253

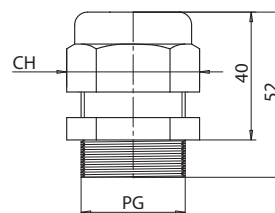
Layout to attach base to mold
Schema per sede custodia fissa da eseguire sullo stampo

To mount base use n 4 screws M5x12 UNI 5931
Per il fissaggio delle custodie utilizzare n4 M5x12 UNI 5931



STRAIN RELIEF FITTING / PRESSACAVO DI RICAMBIO

code / cod.	Cables / Cavo		PG	CH
	min	max		
E11119	13	18	PG21	36
E11120	18	25	PG18	42





ELECTRICAL CONNECTOR
48 poles - 240V - 16A

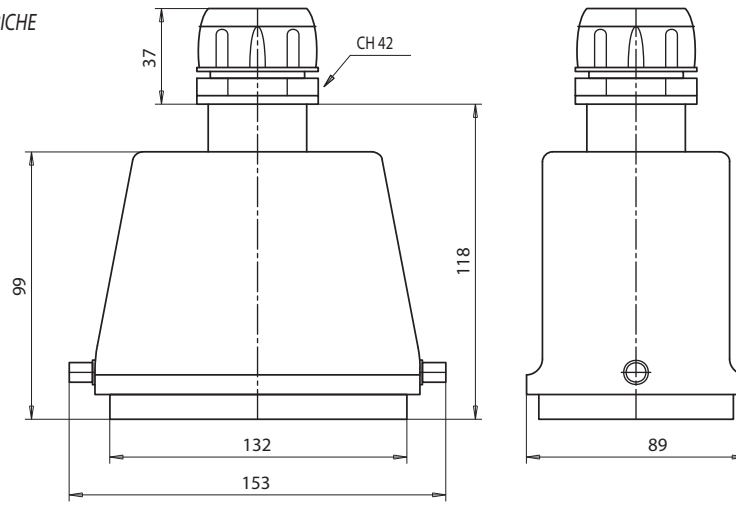
CONNESSIONI ELETTRICHE
48 poli - 240V - 16A

Cables
min. 19
max. 29

Cavo
min. 19
max. 29

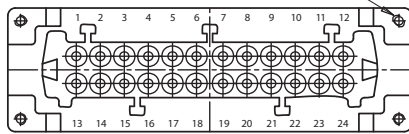
HOOD / CUSTODIE MOBILI

code / cod. E04247



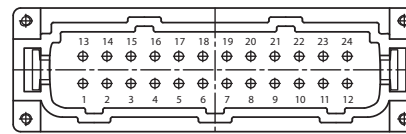
RECEPTACLE / FRUTTO FEMMINA

code / cod. E04221



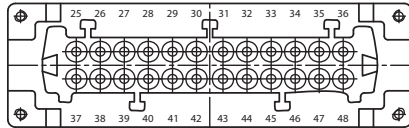
PLUG / FRUTTO MASCHIO

code / cod. E04220



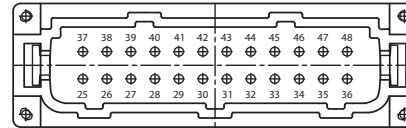
RECEPTACLE
FRUTTO FEMMINA

code / cod. E05147



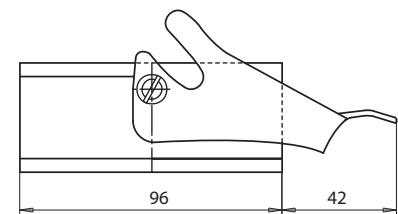
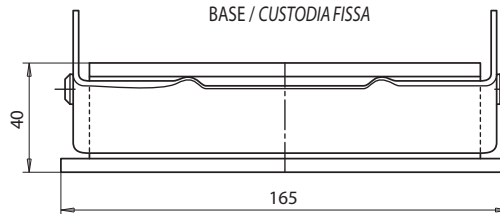
PLUG / FRUTTO MASCHIO

code / cod. E05146



BASE / CUSTODIA FISSA

code / cod. E04246



CODING PIN FEMALE
PERNO ORIENTAMENTO FEMMINA

code / cod. E04254



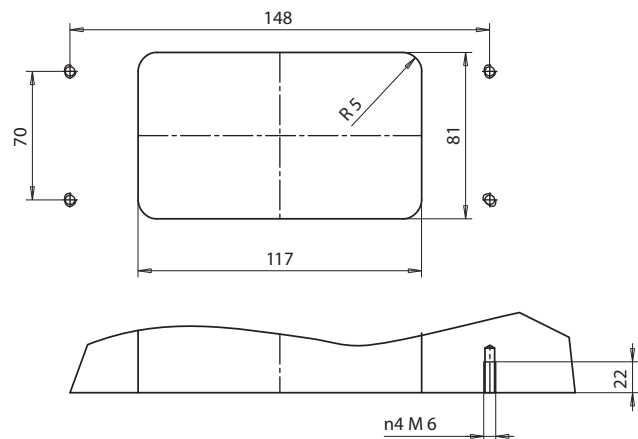
Where several plugs are mounted adjacent to one another, substitute these pins to avoid errors.
Sostituire alle viti di fissaggio frutto uno o più perni di orientamento maschio e femmina per evitare montaggi errati.



CODING PIN MALE
PERNO ORIENTAMENTO MASCHIO

code / cod. E04253

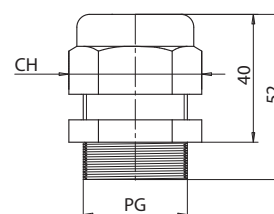
Layout to attach base to mold
Schema per sede custodia fissa da eseguire sullo stampo



To mount base use n 4 screws M6x12 UNI 5931
Per il fissaggio delle custodie utilizzare n4 M6x12 UNI 5931

STRAIN RELIEF FITTING / PRESSACAVO DI RICAMBIO

code / cod.	Cables / Cavo		PG	CH
	min	max		
E11119	13	18	PG21	36
E11120	18	25	PG18	42



CONNECTORS / SET DI CONNESSIONI



ELECTRICAL CONNECTOR
48 poles - 240V - 16A

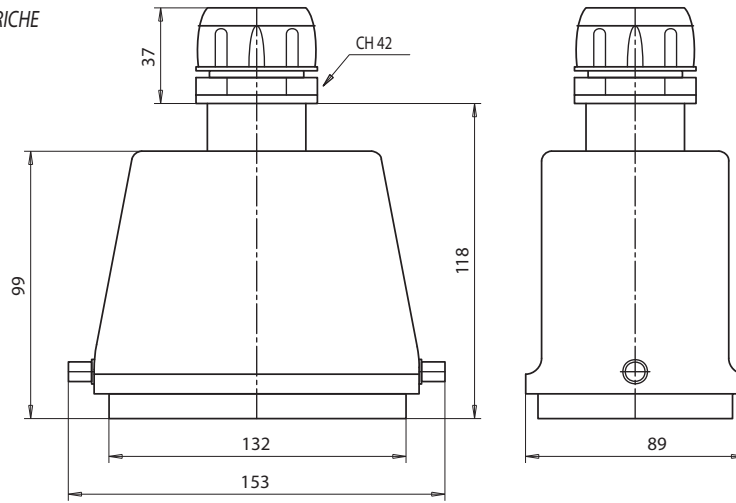
CONNESSIONI ELETTRICHE
48 poli - 240V - 16A

Cables
min. 19
max. 29

Cavo
min. 19
max. 29

HOOD / CUSTODIE MOBILI

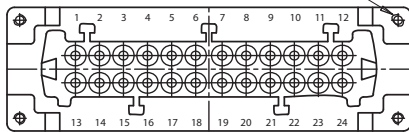
code / cod. E04247



Mounting screw
vite fissaggio frutto

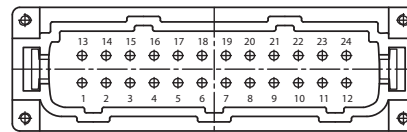
RECEPTACLE / FRUTTO FEMMINA

code / cod. E04221



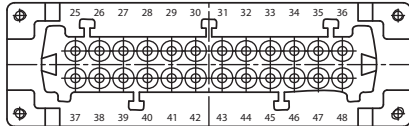
PLUG / FRUTTO MASCHIO

code / cod. E04220



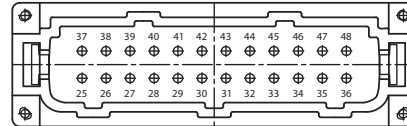
RECEPTACLE
FRUTTO FEMMINA

code / cod. E05147



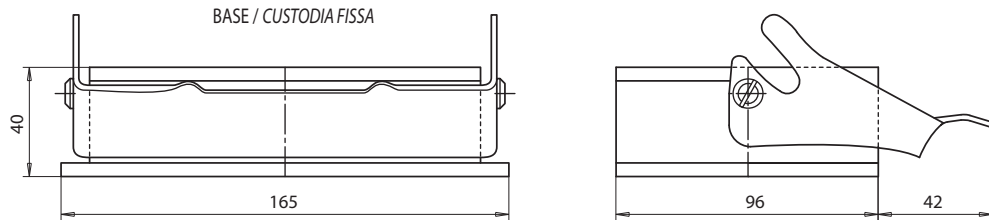
PLUG / FRUTTO MASCHIO

code / cod. E05146



BASE / CUSTODIA FISSA

code / cod. E04246



CODING PIN FEMALE
PERNO ORIENTAMENTO FEMMINA

code / cod. E04254



Where several plugs are mounted adjacent to one another, substitute these pins to avoid errors.

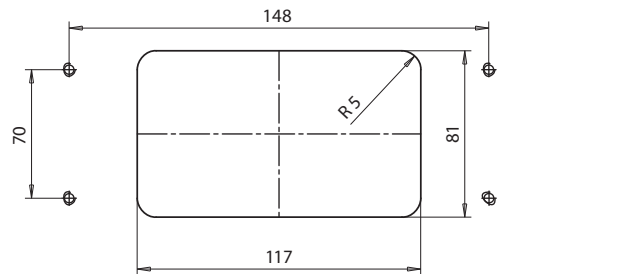
Sostituire alle viti di fissaggio frutto uno o più perni di orientamento maschio e femmina per evitare montaggi errati.

CODING PIN MALE
PERNO ORIENTAMENTO MASCHIO

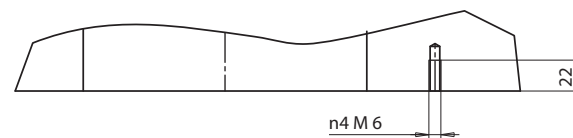
code / cod. E04253



Layout to attach base to mold
Schema per sede custodia fissa da eseguire sullo stampo

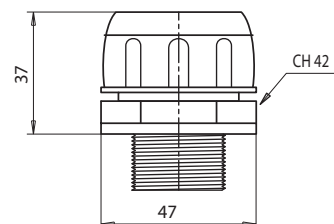


To mount base use n 4 screws M6x12 UNI 5931
Per il fissaggio delle custodie utilizzare n4 M6x12 UNI 5931



STRAIN RELIEF FITTING / PRESSACAVO DI RICAMBIO

code / cod. E04252



Cable
min. 19
max. 29

Cavo
min. 19
max. 29

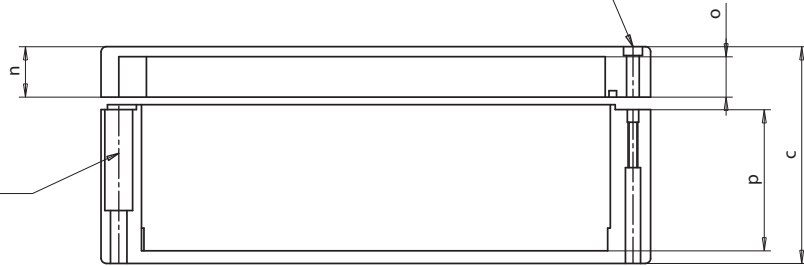


TERMINAL MOUNTING BOX / CUSTODIE

Material / Materiale Alluminium / Alluminio

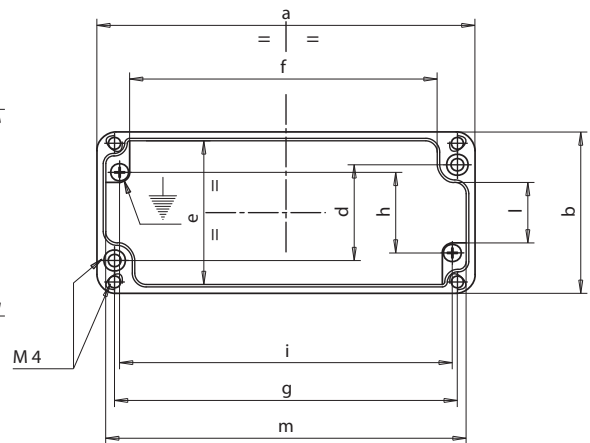
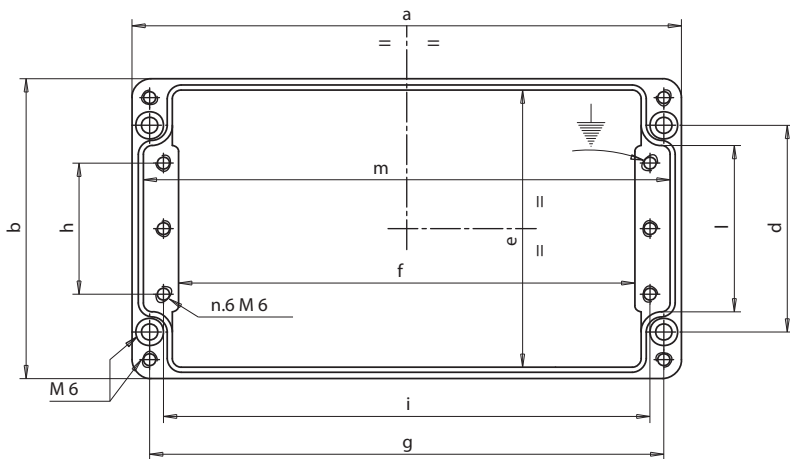
Screw hole M4/M6 to mount cover
Sede vite M4/M6 per fissaggio coperchio

Screw hole M4/M6 to mount terminal box
Sede vite M4/M6 per fissaggio custodia



Type / Tipo A

Type / Tipo B



code / cod.	Type/Tipo	a	b	c	d	e	f	g	h	i	l	m	n	o	p
E04384	A	360	120	80	82	111	328	344	52	333	66	351	20	16.5	56.5
E04385		220					188	204		193		211			
E04386		160	160	90	110	151	120	140	76	130	90	151			
E05144		360					320	340		330		351			
E05153		330	230	180	181	221	290	310	144	300	160	318		15	155
E04387	B	250	80	52	52	72	224	238	48	230	40	242	12	8.5	36.5
E04388		150	64	34	36	56	126	138	32	132	24	142	9	5.5	21.5
E05127		175	80	57	52	72	147	163	30	156	50	167	15	11.5	38.5

APPLICATION EXAMPLES OF TERMINAL MOUNTING BOX / ESEMPI DI APPLICAZIONI DELLE CUSTODIE

