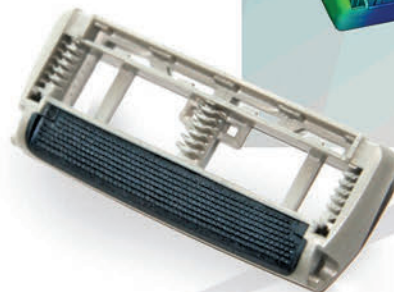
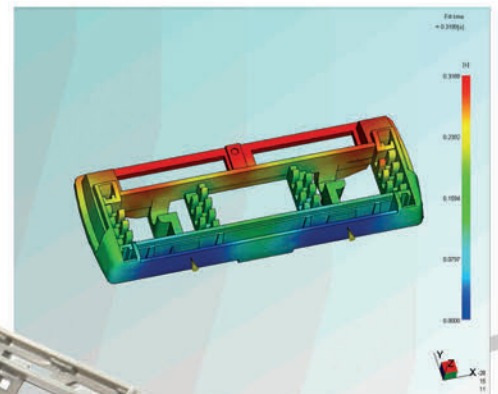
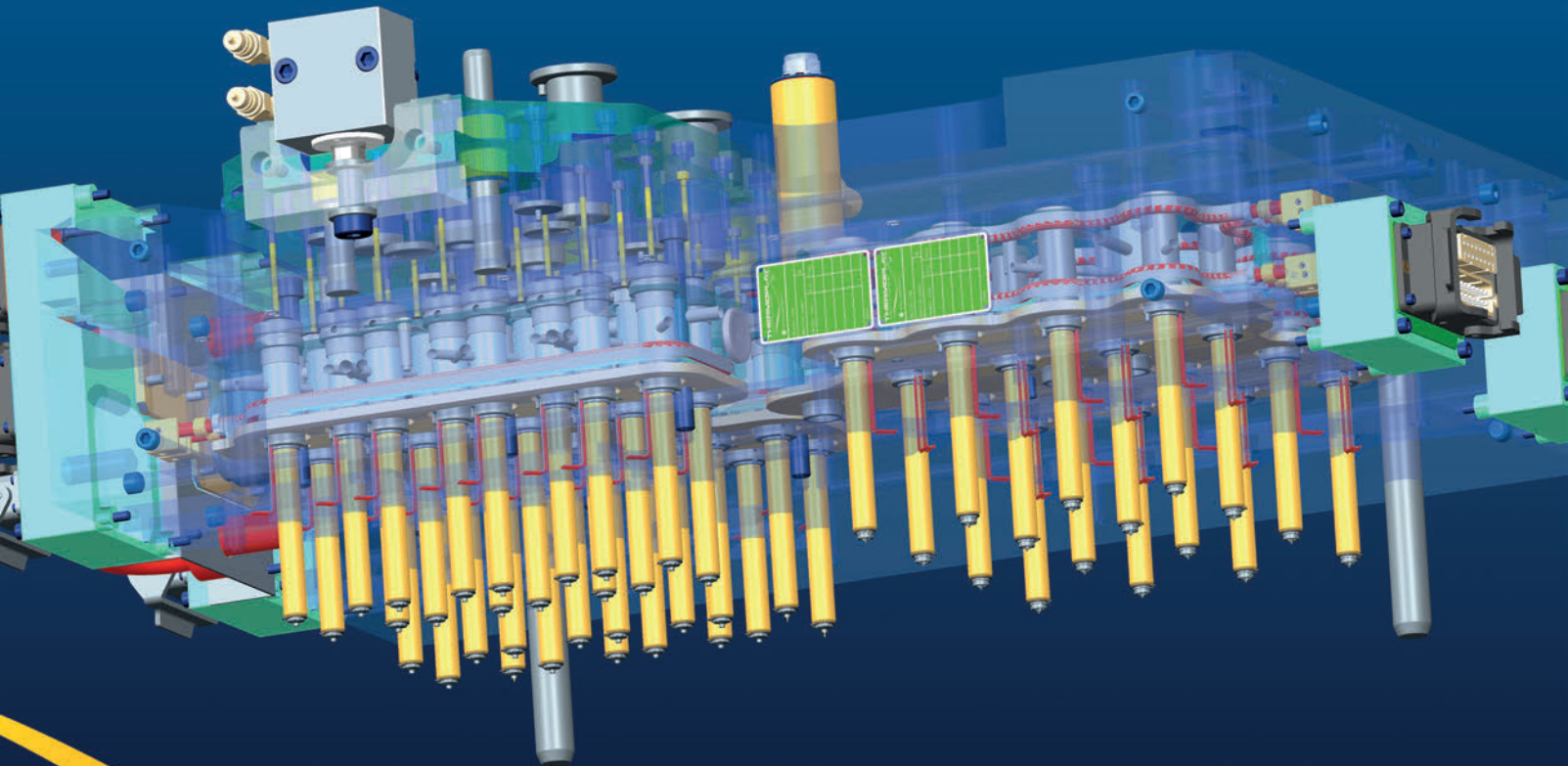


## Plate actuated valve gate solution



- **Injection system:** Thermoplay SS141079
- **Nozzles:** N.16 FN1T direct inj. nozzles diam.16, L=116 mm  
N.32 FN3T valve gate nozzles diam.16, L=116 mm
- **Valve gate actuation:** pneumatic plate actuated
- **Cavities:** 16+32
- **Moulded part:** 2-material razor blade support
- **Dimensions:** 40x15x5.5 mm
- **Weight:** 1.48 gr
- **Avg thickness:** 0.78-1.7 mm
- **Material:** ABS+TPE
  
- **Injection moulding cycle:** 0,4 sec
- **Total cycle time:** 18 sec
- **Hot runner temperature:** 250° C
- **Mold temperature:** 40° C
- **Mold maker:** DORCO CO., LTD., KOREA
- **End user:** DORCO CO., LTD., KOREA





## Antriebssystem für Nadelverschluss

- **Heißkanalsysteme:** Thermoplay SS141079
- **Düsentyp:** N.16 FN1T direkteinspritzung Ø 16, L=116 mm  
N.32 FN3T nadelverschluss Ø16, L=116 mm
- **Antriebssystem:** pneumatische Verschlussysteme
- **Anspritzpunkte:** 16+32
- **Artikel:** 2-materialen Rasierklinge-Unterstützung
- **Dimensionen:** 40x15x5.5 mm
- **Masse:** 1.48 gr
- **Stärke:** 0.78-1.7 mm
- **Material:** ABS+TPE
  
- **Anspritzung-Zeit:** 0,4 sec
- **Zyklus-Füllzeit:** 18 sec
- **Heißkanal-Temperatur:** 250° C
- **Wandtemperatur:** : 40° C
- **Kunde:** DORCO CO., LTD. , KOREA

