

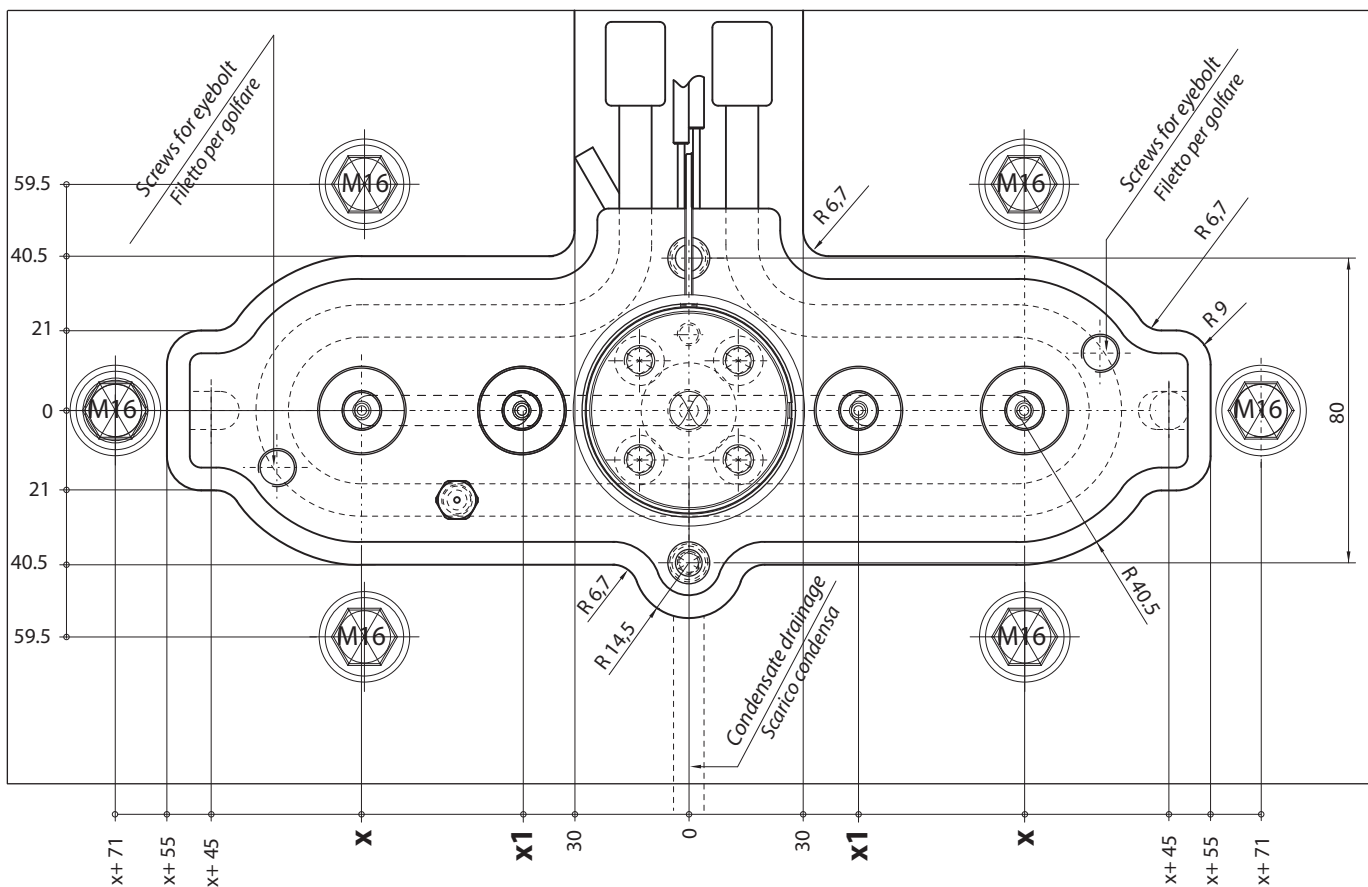
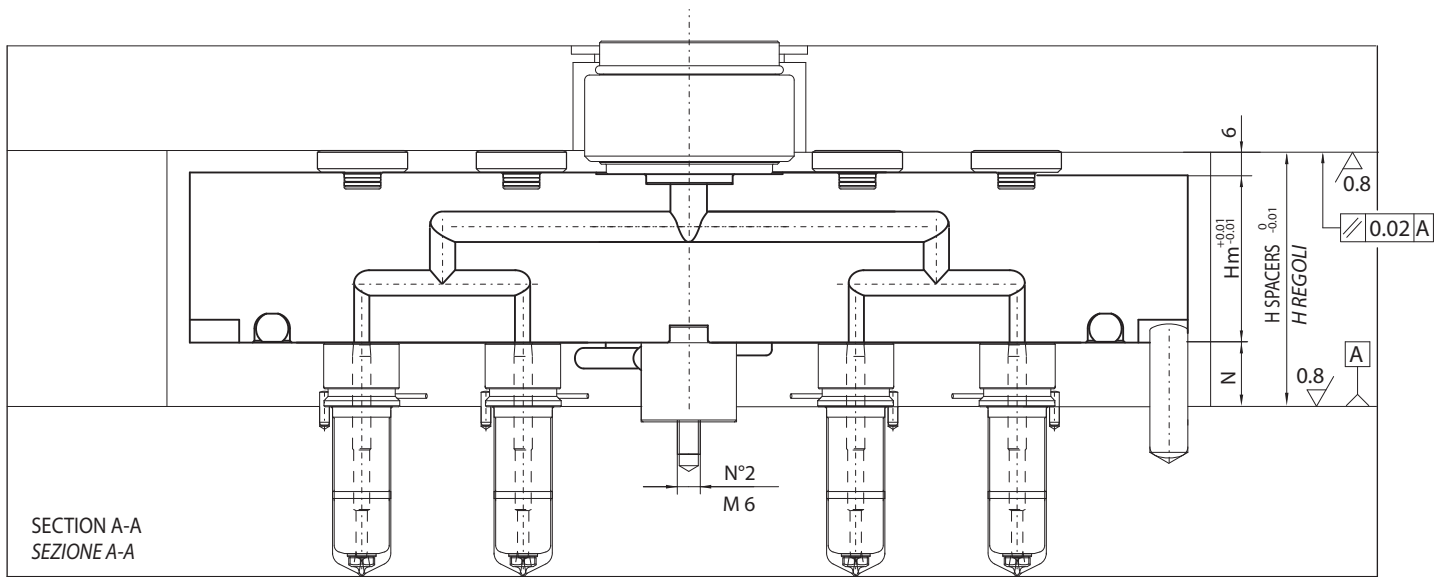


CONFIGURABLE SYSTEMS

Create the configuration on www.thermoplay.com

SISTEMI A CANALE CALDO CONFIGURABILI

Creare la configurazione su www.thermoplay.com



H spacers / regoli = (N + Hm + 6) + [(N + Hm + 6) • Δt • k]-0.05=mm

N= nozzle head / testa ugelli

Hm = Manifold thickness / altezza piastra (DNØ18-22 / FØ11/FØ16-24 Hm = 44 - DNØ30/FØ32 Hm = 52)

Δt = Temperature difference between the hot runner and the mould / differenza di temperatura tra camera calda e stampo

K = Steel thermal expansion coefficient / coefficiente di dilatazione termica dell'acciaio (= 0.000125)



CONFIGURABLE SYSTEMS / SISTEMI A CANALE CALDO CONFIGURABILI

Manifold / Piastra			Heater / Resistenza			Termocouple / Termocoppia		
1 Code / Codice piastra	Nozzle c/c - Interasse		Armored heaters 3 / Resistenze corazzate 3			grounded / a massa	insulated / isolata	Q.ty / Q.tà
	X1	X	Code / Codice	Power 2 / Potenza [W]	Q.ty / Q.tà			
E95001	45<x1<46	104<x<105	TS010	2300	1	E06143	E16055	1
E95002	45<x1<51	105<x<110	TS010	2300				
E95003	45<x1<56	110<x<115	TS011	2700				
E95004	45<x1<61	115<x<120	TS050	2500				
E95005	45<x1<66	120<x<125	TS012	2500				
E95006	45<x1<71	125<x<130	TS062	2500				
E95007	45<x1<76	130<x<135	TS063	2700				
E95008	45<x1<81	135<x<140	TS130	3300				
E95009	45<x1<86	140<x<145	TS015	3100				
E95010	45<x1<91	145<x<150	TS156	3300				
E95011	45<x1<96	150<x<155	TS065	3100				
E95012	45<x1<101	155<x<160	TS065	3100				
E95013	45<x1<106	160<x<165	TS123	2700				
E95014	45<x1<111	165<x<170	TS018	3300				
E95015	45<x1<116	170<x<175	TS176	3000				
E95016	45<x1<121	175<x<180	TS020	3200				
E95017	45<x1<126	180<x<185	TS020	3200				
E95018	45<x1<131	185<x<190	TS068	3300				
E95019	45<x1<136	190<x<195	TS069	3300				
E95020	45<x1<145	195<x<200	TS070	3200				
E95021	45<x1<146	200<x<205	TS070	3200				
E95022	45<x1<151	205<x<210	TS024	3300				
E95023	45<x1<156	210<x<215	TS024	3300				
E95024	45<x1<161	215<x<220	TS025	3300				
E95025	45<x1<166	220<x<225	TS026	3400				
E95026	45<x1<171	225<x<230	TS175	3400				
E95027	45<x1<176	230<x<235	TS177	3500				
E95028	45<x1<181	235<x<240	TS119	3400				
E95029	45<x1<186	240<x<245	TS140	3500				
E95030	45<x1<191	245<x<250	TS029	3300				

SPARE PARTS / RICAMBI

1 Not valid code for order / Non valido come codice d'ordine

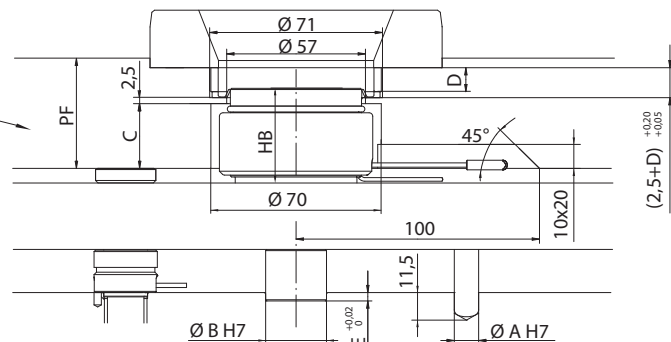
2 Nominal power referred to each single heater / Potenza nominale riferita ad ogni singolo elemento riscaldante

3 To be carried out at Thermoplay / Sostituzione da effettuare in Thermoplay

Heat - treatable steel plate 110 Kg/mm²
in alternative hardened steel HRC 42-46
Piastra in acciaio bonificato 110 kg/mm²
in alternativa acciaio temprato HRC 42-46

For dimension not specified consult Thermoplay catalogue in accessories section.
Per le quote non specificate consultare la sezione 16 -Accessori

HB	C	PF
22	11	18 + D
40	27	36 + D
46	27	36 + D
60	47	56 + D
84	71	80 + D



Further information have to be requested to Thermoplay's Technical Support - Per ulteriori informazioni consultare il Servizio Tecnico Thermoplay