

WORKSHEET FOR HOT HALF ENQUIRY

◦ **PILLARS, SCREWS AND CENTERING RING:**

- CENTERING PILLARS (C1): \varnothing Q.ty (small diameter).
- CENTERING PILLARS (C2): \varnothing Q.ty (big diameter).
- FIXING SCREWS (B): M Q.ty
- CENTERING RING (D): \varnothing

◦ **ELECTRICAL SOCKETS AND LAYOUT:**

- SOCKET TYPE:
- PLEASE SUPPLY NUMBERING NOZZLES
- PLEASE SUPPLY TEMPERATURE CONTROLLER
- ELECTRICAL LAYOUT

◦ **PLEASE STATE LOCATION OF:**

- ELECTRICAL CONNECTORS (1- 12)
- COOLING FITTINGS

◦ **NOZZLE PROTUSION FROM NOZZLE-HOLDER PLATE (A)**

◦ **HOT HALF MAXIMUM THICKNESS (HT)**

- **CLAMPING:**
- EMBEDDED PASSING THROUGH (G1)
 - EMBEDDED BLIND (G2)
 - OUT OF EDGE (G3)

IF CLAMPING IS OUT OF EDGE, PLEASE SPECIFY (F) DIMENSION

◦ **FOR COOLING FITTINGS, PLEASE SPECIFY:**

- THREADS: not embedded (E2)
 embedded (E1)
- if embedded please specify \varnothing Y:
and the depth
- THREADS: / GAS
 threads M

◦ **INSULATING PLATE:**

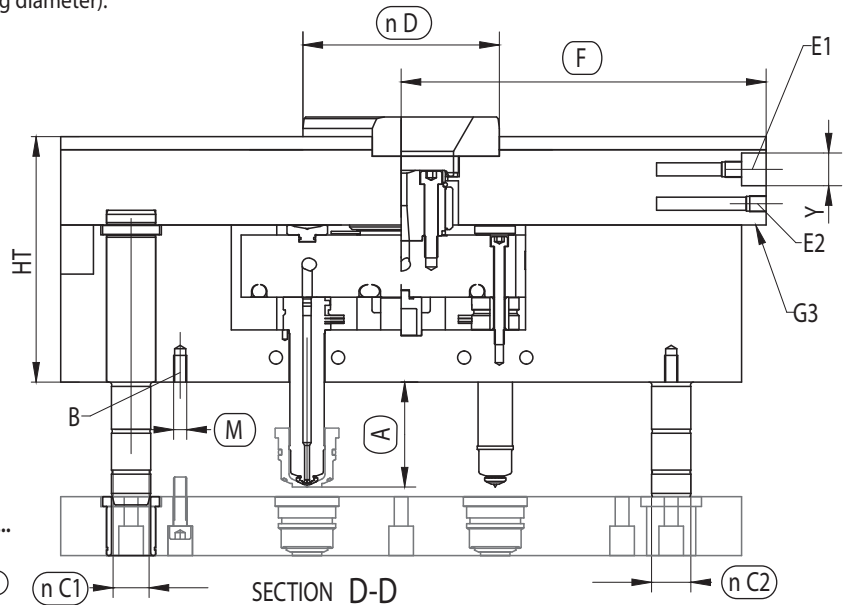
- YES
- NO

◦ **INOX:**

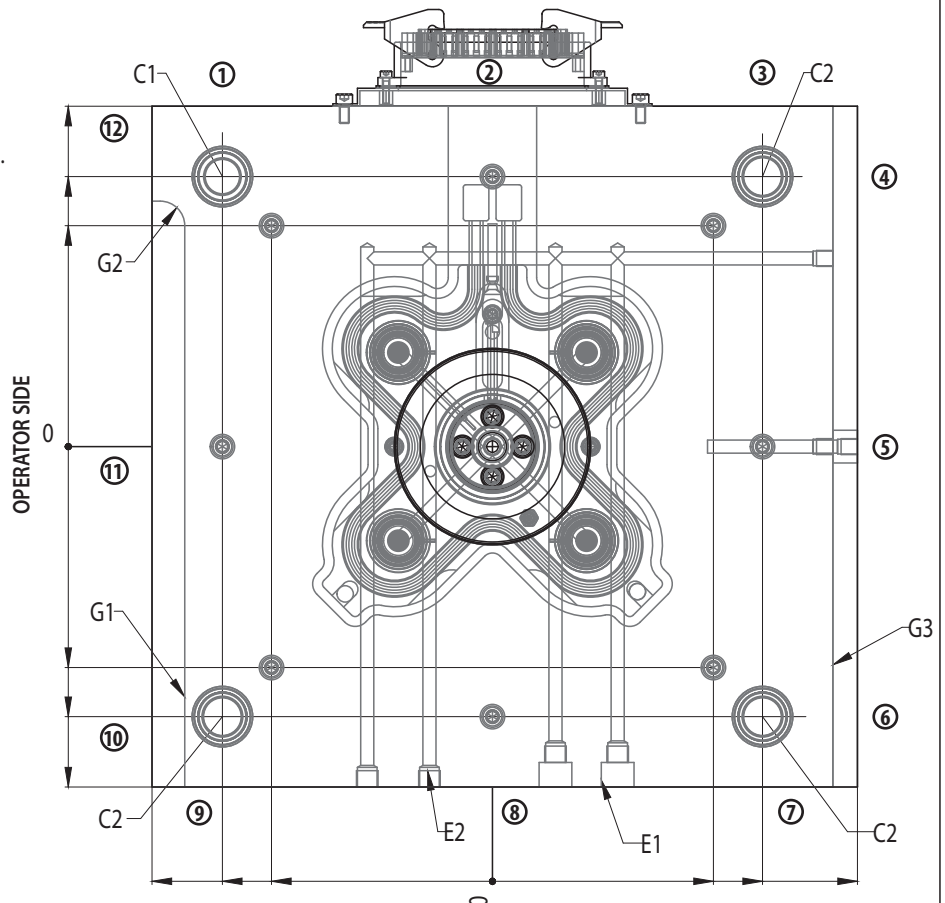
- YES
- NO

◦ **HEATER CABLES EXIT IN THE MIDDLE:
(ONLY NOZZLES F \varnothing 16-24)**

- YES
- NO



TOP OF THE MOULD



NOTE: The represented drawing is "view from injection bushing/nozzle press".

Customer technical specs.

NOTE

WORKSHEET FOR HOT HALF ENQUIRY

◦ **PILLARS, SCREWS AND CENTERING RING:**

- CENTERING PILLARS (C1): ϕ Q.ty(small diameter).
- CENTERING PILLARS (C2): ϕ Q.ty(big diameter).
- FIXING SCREWS (B): M Q.ty
- CENTERING RING (D): ϕ

◦ **ELECTRICAL SOCKETS AND LAYOUT:**

- SOCKET TYPE:
- PLEASE SUPPLY NUMBERING NOZZLES
- PLEASE SUPPLY TEMPERATURE CONTROLLER ELECTRICAL LAYOUT

◦ **PLEASE STATE LOCATION OF:**

- ELECTRICAL CONNECTORS (1- 12)
- COOLING FITTINGS
- SHUT OFF VALVES CONTROL CONNECTIONS

◦ **NOZZLE PROTUSION FROM NOZZLE-HOLDER PLATE (A)**

◦ **HOT HALF MAXIMUM THICKNESS (HT)**

- ◻ **CLAMPING:** EMBEDDED PASSING THROUGH (G1)
- EMBEDDED BLIND (G2)
- OUT OF EDGE (G3)

IF CLAMPING IS OUT OF EDGE, PLEASE SPECIFY (F) DIMENSION

◦ **FOR COOLING FITTINGS, PLEASE SPECIFY:**

- THREADS: not embedded (E2)
- embedded (E1)
- if embedded please specify ϕ Y:
- and the depth
- THREADS: / GAS
- threads M

◦ **FOR SHUT OFF VALVES CONTROL CONNECTIONS PLEASE SPECIFY:**

- OPERATION: air oil
- THREADS: not embedded (E2)
- embedded (E1)
- if embedded please specify ϕ Y:
- and the depth
- THREADS TYPE: / GAS
- threads M

◦ **INSULATING PLATE:**

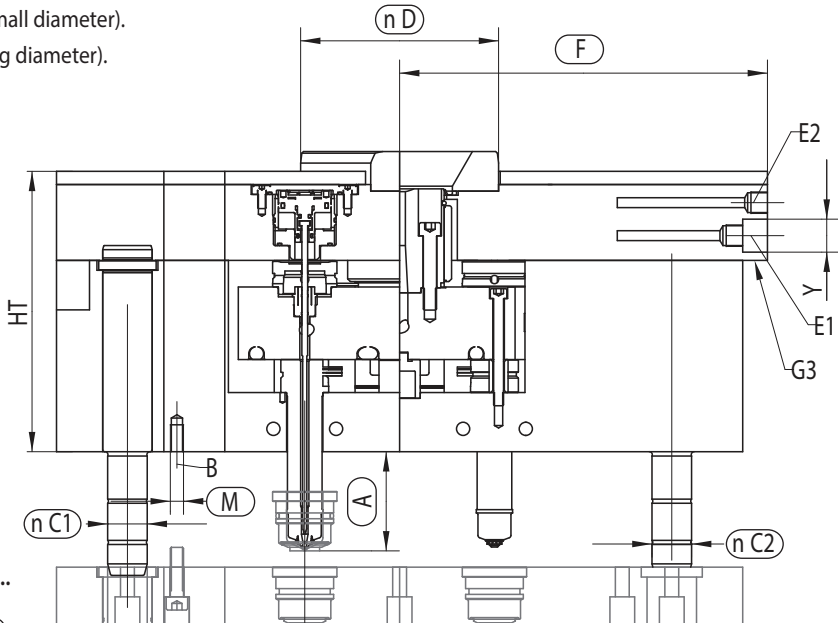
- YES
- NO

◦ **INOX:**

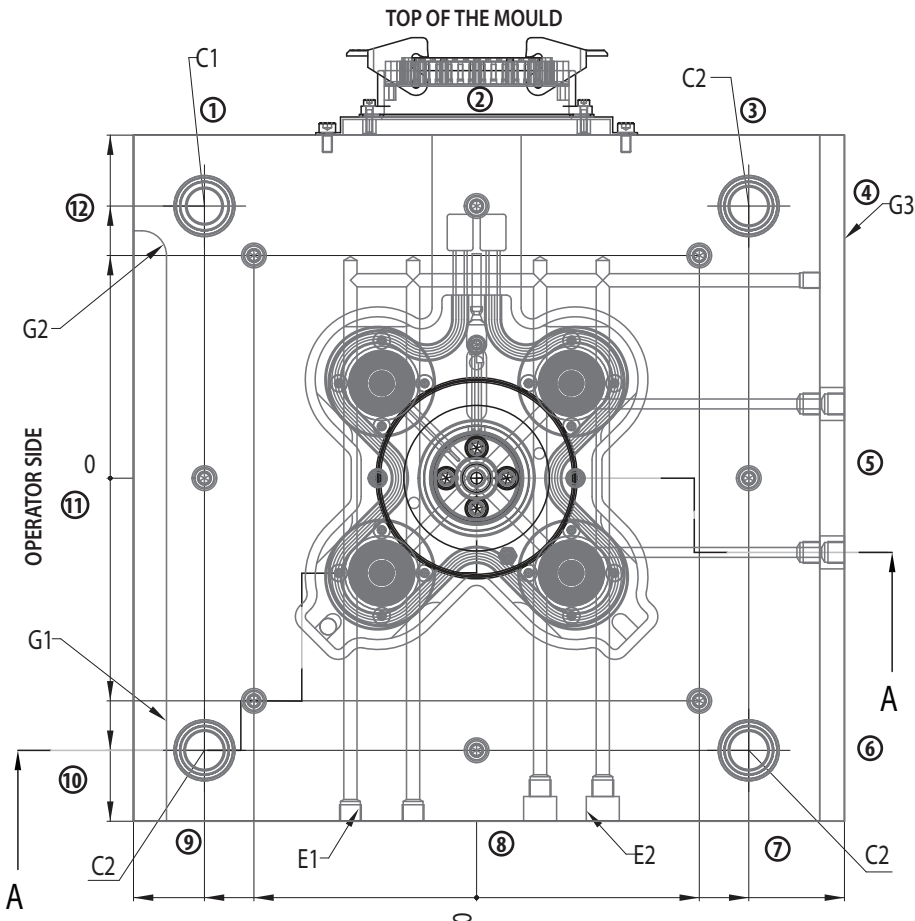
- YES
- NO

◦ **HEATER CABLES EXIT IN THE MIDDLE: (ONLY NOZZLES F ϕ 16-24)**

- YES
- NO



SECTION A-A



NOTE: The represented drawing is "view from injection bushing/nozzle press".

Customer technical specs.

NOTE