



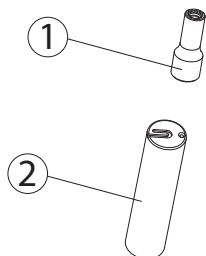
MAINTENANCE TOOL KIT NOZZLES / SINGLE NOZZLE TYPE TF/TF6-FN/FNH 1-2- NOZZLE TYPE TF/FN 3-3B-3D
KIT MANUTENZIONE UGELLI/ MONOUGELLI TIPO TF/TF6-FN/FNH 1-2- UGELLI TIPO TF/FN 3-3B-3D

Consult the user and maintenance manual for instructions / Per istruzioni consultare il manuale d'uso e manutenzione

FN/FNH TF/TF6	1	1B15	1B50	1GLT	1D	1DSLA	1DSL	2	2P	2D	2DSLA	2DSL	3	3B	3D
F11-TF12	E21202	--	--	--	--	--	--	--	--	--	--	--	E15781	--	--
F16-TF17	E19424	E19424	E19425	E19424	E19424	E19425	E19425	E19424	E19424	E19424	E19425	E19425	E19424	E19425	E19424
F24-TF23	E19428	E19428	E19429	E19428	E19429	E19429	E19429	E19428	E19428	E19428	E19429	E19429	E19428	E19429	E19428
F32	E19432	--	--	--	E19433	E19433	E19433	E19432	E19432	E19433	E19433	E19433	E19432	E19433	E19433
F46	E19436	--	--	--	E19437	E19437	E19437	E19436	E19436	E19437	E19437	E19437	E19436	E19437	E19437
F60	--	--	--	--	E19440	E19440	E19440	--	--	E19440	E19440	E19440	--	--	--

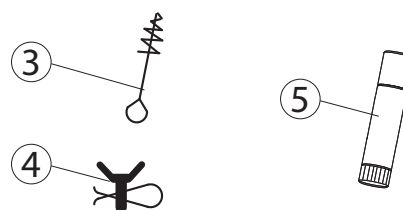
COMPOSED BY:

1. Bi-hexagon socket
2. Tool for thermocouple bending
3. Brush for cleaning tip hole in the nozzle core
4. Retractor tools for heater
5. Loctite grease



COMPOSTO DA:

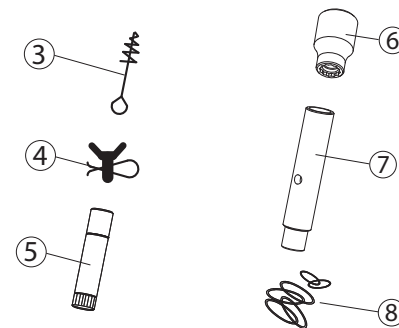
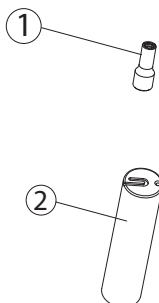
1. Chiave a bussola
2. Attrezzo conformatura termocoppia
3. Scovolino per la pulizia alloggiamento puntale
4. Divaricatore per resistenze
5. Loctite antigrippante



MAINTENANCE TOOL KIT FOR SHUT OFF NOZZLES TYPE MO/MG 3-3B-3D
KIT MANUTENZIONE MONOUGELLI AD OTTURAZIONE TIPO MO/MG 3-3B-3D

Consult the user and maintenance manual for instructions / Per istruzioni consultare il manuale d'uso e manutenzione

MO/MG	3	3B	3D
MO17	E19426	E19427	E19426
MO23	E19430	E19431	E19430
MO32	E19434	E19457	E19457
MG46	E20198	E21214	E21214



COMPOSED BY:

1. Disassembly tool for nozzle tip
2. Tool for thermocouple bending
3. Brush for cleaning tip hole in the nozzle core
4. Retractor tools for heater
5. Loctite grease
6. Wrench for closing and opening the ring nut
7. Disassembly tool for pin guide extraction
8. O-ring complete set

COMPOSTO DA:

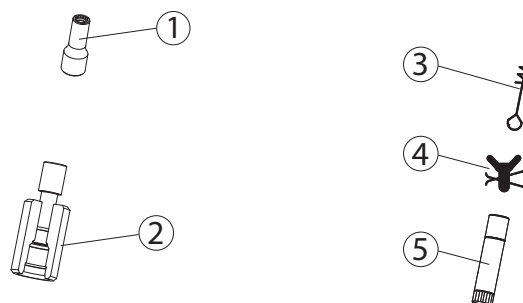
1. Attrezzo smontaggio puntale
2. Attrezzo conformatura termocoppia
3. Scovolino per la pulizia alloggiamento puntale
4. Divaricatore per resistenza
5. Loctite antigrippante
6. Chiave apertura chiusura ghiera
7. Estrattore boccola guida spillo
8. Set completo O-ring



**MAINTENANCE TOOL KIT NOZZLES / SINGLE NOZZLE TYPE DN1/DN6 1-1B-2-NOZZLE TYPE DN3
KIT MANUTENZIONE UGELLI/ MONOUGELLI TIPO DN1/DN6 1-1B-2- UGELLI TIPO DN3**

Consult the user and maintenance manual for instructions / Per istruzioni consultare il manuale d'uso e manutenzione

DN/DN6 TD/TD6	1	1B35	1GLT	2	3
TD18	E21204	E21207	E21204	E21204	E21204
TD22	E21205	E21208	E21205	E21205	E21205
TD30	E21206	E21209	E21206	E21206	E21206
DN44	E17974	E17978	E17974	E17974	E17984



COMPOSED BY:

1. Bi-hexagon socket (use with torque wrench not supplied)
2. Tool for thermocouple bending
3. Brush for cleaning tip hole in the nozzle core
4. Retractor tools for heater
5. Loctite grease

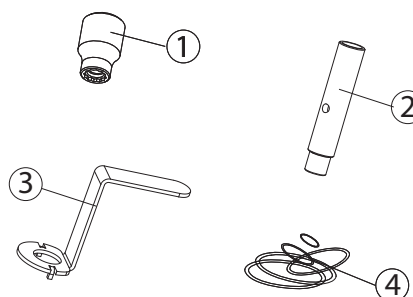
COMPOSTO DA:

1. Chiave a bussola (da utilizzare con chiave dinamometrica non in dotazione)
2. Attrezzo per lo smontaggio del nucleo
3. Scovolino per la pulizia alloggiamento puntale
4. Divaricatore per resistenza
5. Loctite antigrippante

**MAINTENANCE TOOL KIT FOR SHUT OFF GROUPS
KIT DI MANUTENZIONE PER GRUPPI AD OTTURAZIONE**

Consult the user and maintenance manual for instructions / Per istruzioni consultare il manuale d'uso e manutenzione

type	codice gr. otturatore valve gate code	KIT code
S20-HY	E21105 -E21360	E21464
S32-PN	E21361-E19399	E18521
S32-HY	E21362-E21487	E21465
K32-PN	E18326	E18524
S60-PN	E18327	E18523
K40-PN	E18329	E18525



COMPOSED BY:

1. Wrench for closing and opening the ring nut
2. Disassembly tool for pin guide extraction
3. Wrench for pin stroke adjustment
4. O-ring complete set

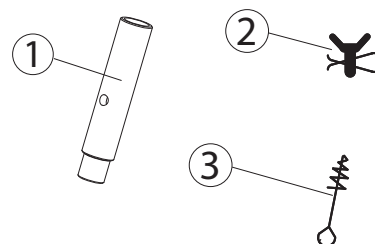
COMPOSTO DA:

1. Chiave apertura/chiusura ghiera
2. Estrattore boccola guida spillo
3. Chiave regolazione corsa spillo
4. Set completo O-ring

**MAINTENANCE TOOL KIT FOR MULTI-TIPS NOZZLES
KIT DI MANUTENZIONE PER UGELLI MULTIPUNTE**

Consult the user and maintenance manual for instructions / Per istruzioni consultare il manuale d'uso e manutenzione

	DL1B	DN5/2	DN5/3	DL8	DL90
Ø 18	E19981	E19985	E19986	E19987	E19988
Ø 22	E19982				E19989
Ø 30	E19983				E19990
Ø 44	E19984				E19991



COMPOSED BY:

1. Disassembly tool for nozzle core
2. Retractor tools for heater
3. Brush for cleaning tip hole in the nozzle core (only for DL90 nozzle type)

COMPOSTO DA:

1. Attrezzo per lo smontaggio del nucleo
2. Divaricatore per resistenza
3. Scovolino per la pulizia alloggiamento puntale (solo per tipi DL90)