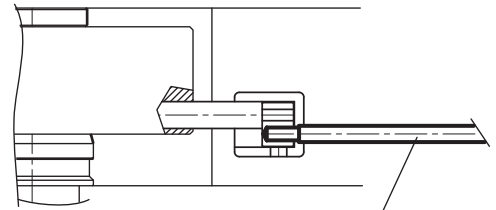
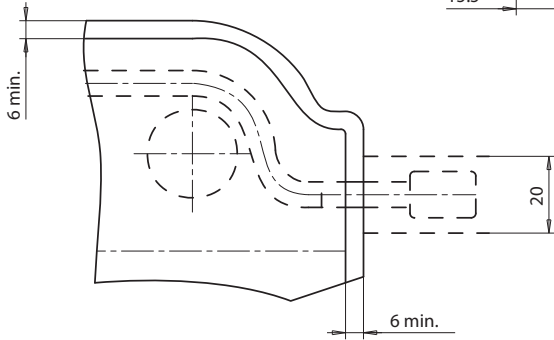
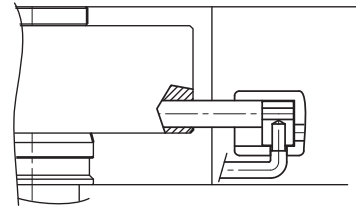
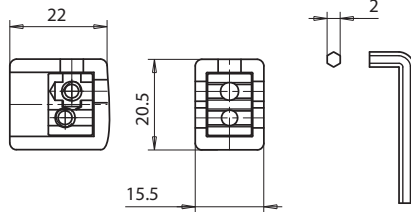




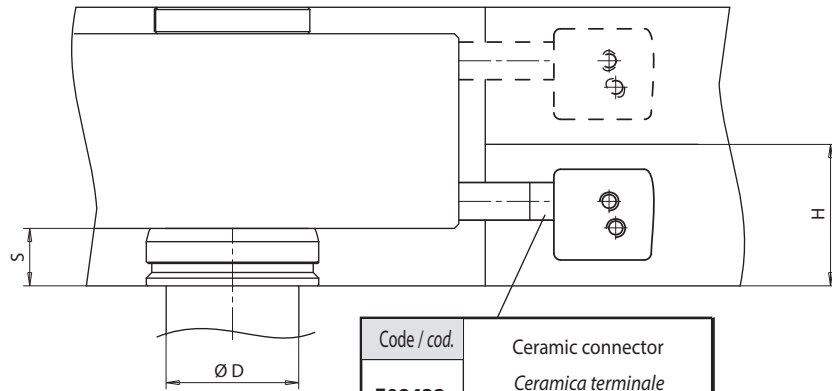
CABLE FASTENER / DISPOSITIVO DI FISSAGGIO PER CAVO

Code / cod.	Complete cable fastener
<b>E06111</b>	Dispositivo di fissaggio per cavo completo



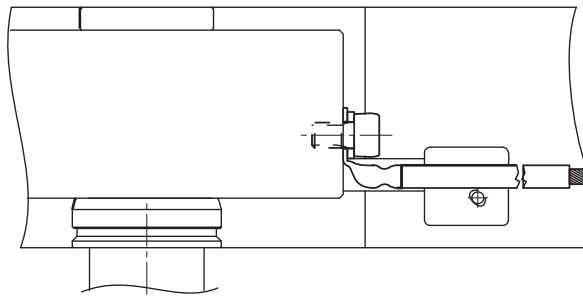
Code / cod.	Power cable Ø 2.5 mm L=1500 mm
<b>E17453</b>	Cavo di potenza Ø 2.5mm L=1500mm

TYPE / TIPO	S	H
FØ11	13	32
FØ16 - DNØ18	18	37
KS5-8 Ø 22 - 30		
FØ24/32 - DNØ22	20	39
DNØ30		
DNØ44	25	44
KS5-8 Ø44		



Code / cod.	Ceramic connector
<b>E08432</b>	Ceramica terminale resistenza

Code / cod.	Electrical wire for ground connection
<b>E08433</b>	Cavo elettrico per connessione a terra



SPACER FOR SCREWS / DISTANZIALE PER VITI

Code / cod.	H	Nozzle type / Tipo ugello
<b>E08575</b>	13	F Ø 11
<b>E08576</b>	18	FØ16
		KS5/8Ø22/30 DNØ18
<b>E08577</b>	20	FØ24/32 - DNØ22-30
<b>E08578</b>	25	FØ46 - DNØ44 - KS5/8Ø44

