



**MAINTENANCE TOOL KIT NOZZLES / SINGLE NOZZLE TYPE TF/TF6-FN/FNH 1-2- NOZZLE TYPE TF/FN 3-3B-3D**  
**KIT MANUTENZIONE UGELLI/ MONOUGELLI TIPO TF/TF6-FN/FNH 1-2- UGELLI TIPO TF/FN 3-3B-3D**

Consult the user and maintenance manual for instructions / Per istruzioni consultare il manuale d'uso e manutenzione

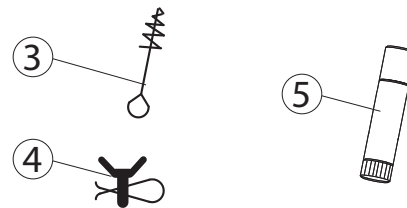
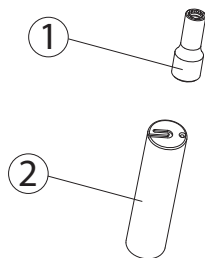
FN/FNH TF/TF6	1	1B15	1B50	1GLT	1D	1DSL	1DSL	2	2P	2D	2DSL	2DSL	3	3B	3D
<b>TF12</b>	E21202	--	--	--	--	--	--	--	--	--	--	--	E15781	--	--
<b>TF17</b>	E19424	E19424	E19425	E19424	E19424	E19425	E19425	E19424	E19424	E19424	E19425	E19425	E19424	E19425	E19424
<b>TF23</b>	E19428	E19428	E19429	E19428	E19429	E19429	E19429	E19428	E19428	E19428	E19429	E19429	E19428	E19429	E19428
<b>TF32</b>	E19432	--	--	--	E19433	E19433	E19433	E19432	E19432	E19433	E19433	E19433	E19432	E19433	E19433
<b>TF46</b>	E19436	--	--	--	E19437	E19437	E19437	E19436	E19436	E19437	E19437	E19437	E19436	E19437	E19437

COMPOSED BY:

1. Bi-hexagon socket
2. Tool for thermocouple bending
3. Brush for cleaning tip hole in the nozzle core
4. Retractor tools for heater
5. Loctite grease

COMPOSTO DA:

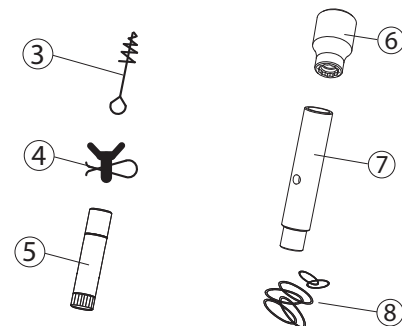
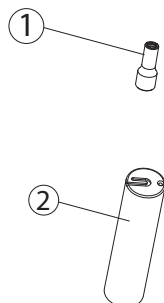
1. Chiave a bussola
2. Attrezzo conformatura termocoppia
3. Scovolino per la pulizia alloggiamento puntale
4. Divaricatore per resistenze
5. Loctite antigrippante



**MAINTENANCE TOOL KIT FOR SHUT OFF NOZZLES TYPE MO/MG 3-3B-3D**  
**KIT MANUTENZIONE MONOUGELLI AD OTTURAZIONE TIPO MO/MG 3-3B-3D**

Consult the user and maintenance manual for instructions / Per istruzioni consultare il manuale d'uso e manutenzione

MO/MG	3	3B	3D
<b>MO17</b>	E19426	E19427	E19426
<b>MO23</b>	E19430	E19431	E19430
<b>MO32</b>	E19434	E19457	E19457
<b>MG46</b>	E20198	E21214	E21214



COMPOSED BY:

1. Disassembly tool for nozzle tip
2. Tool for thermocouple bending
3. Brush for cleaning tip hole in the nozzle core
4. Retractor tools for heater
5. Loctite grease
6. Wrench for closing and opening the ring nut
7. Disassembly tool for pin guide extraction
8. O-ring complete set

COMPOSTO DA:

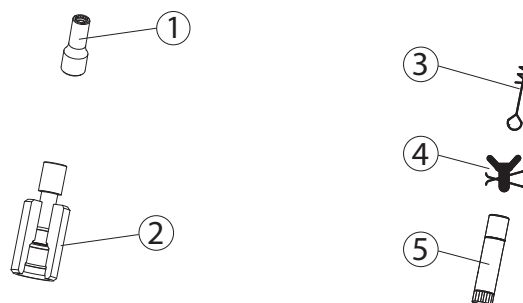
1. Attrezzo smontaggio puntale
2. Attrezzo conformatura termocoppia
3. Scovolino per la pulizia alloggiamento puntale
4. Divaricatore per resistenza
5. Loctite antigrippante
6. Chiave apertura chiusura ghiera
7. Estrattore boccola guida spillo
8. Set completo O-ring



**MAINTENANCE TOOL KIT NOZZLES / SINGLE NOZZLE TYPE DN1/DN6 1-1B-2-NOZZLE TYPE DN3  
KIT MANUTENZIONE UGELLI/ MONOUGELLI TIPO DN1/DN6 1-1B-2- UGELLI TIPO DN3**

Consult the user and maintenance manual for instructions / Per istruzioni consultare il manuale d'uso e manutenzione

DN/DN6 TD/TD6	1	1B35	1GLT	2	3
<b>TD18</b>	E21204	E21207	E21204	E21204	E21204
<b>TD22</b>	E21205	E21208	E21205	E21205	E21205
<b>TD30</b>	E21206	E21209	E21206	E21206	E21206
<b>TD44</b>	E21808	E21809	E21808	E21808	E21808



COMPOSED BY:

1. Bi-hexagon socket (use with torque wrench not supplied)
2. Tool for thermocouple bending
3. Brush for cleaning tip hole in the nozzle core
4. Retractor tools for heater
5. Loctite grease

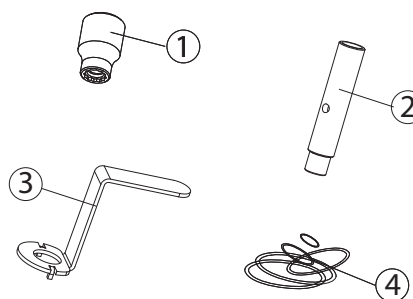
COMPOSTO DA:

1. Chiave a bussola (da utilizzare con chiave dinamometrica non in dotazione)
2. Attrezzo per lo smontaggio del nucleo
3. Scovolino per la pulizia alloggiamento puntale
4. Divaricatore per resistenza
5. Loctite antigrippante

**MAINTENANCE TOOL KIT FOR SHUT OFF GROUPS  
KIT DI MANUTENZIONE PER GRUPPI AD OTTURAZIONE**

Consult the user and maintenance manual for instructions / Per istruzioni consultare il manuale d'uso e manutenzione

type	codice gr. otturatore valve gate code	KIT code
<b>S20-HY</b>	E21105 -E21360	E21464
<b>S32-PN</b>	E21361-E19399	E18521
<b>S32-HY</b>	E21362-E21487	E21465
<b>K32-PN</b>	E18326	E18524
<b>S60-PN</b>	E18327	E18523
<b>K40-PN</b>	E18329	E18525



COMPOSED BY:

1. Wrench for closing and opening the ring nut
2. Disassembly tool for pin guide extraction
3. Wrench for pin stroke adjustment
4. O-ring complete set

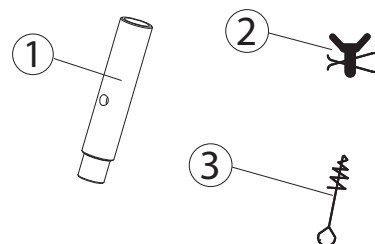
COMPOSTO DA:

1. Chiave apertura/chiusura ghiera
2. Estrattore boccola guida spillo
3. Chiave regolazione corsa spillo
4. Set completo O-ring

**MAINTENANCE TOOL KIT FOR MULTI-TIPS NOZZLES  
KIT DI MANUTENZIONE PER UGELLI MULTIPUNTE**

Consult the user and maintenance manual for instructions / Per istruzioni consultare il manuale d'uso e manutenzione

	DL1B	DN5/2	DN5/3	DL8	DL90
<b>Ø 18</b>	E19981	E19985	E19986	E19987	E19988
<b>Ø 22</b>	E19982				E19989
<b>Ø 30</b>	E19983				E19990
<b>Ø 44</b>	E19984				E19991



COMPOSED BY:

1. Disassembly tool for nozzle core
2. Retractor tools for heater
3. Brush for cleaning tip hole in the nozzle core (only for DL90 nozzle type)

COMPOSTO DA:

1. Attrezzo per lo smontaggio del nucleo
2. Divaricatore per resistenza
3. Scovolino per la pulizia alloggiamento puntale (solo per tipi DL90)