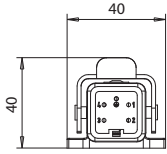




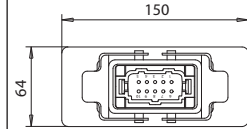
Composed by: cover, receptacle and strain relief.  
Composto da: custodia, frutto e pressacavo.

Diagram of connectors assemblies composed by: cover, box and receptacle.  
Schema riassuntivo dei set di connessioni composti da: custodia, scatola e frutto.

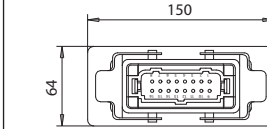
| N. plug<br>N prese | Q.ty poles<br>Q.tà poli        | code<br>Codice |
|--------------------|--------------------------------|----------------|
| n° 1               | 4 Male poles<br>4 poli maschio | E16833         |



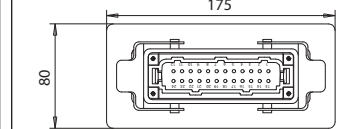
| N. plug<br>N prese | Q.ty poles<br>Q.tà poli            | code<br>Codice |
|--------------------|------------------------------------|----------------|
| n° 1               | 10 female poles<br>10 poli femmina | E15761         |
| n° 1               | 10 Male poles<br>10 poli maschio   | E05128         |



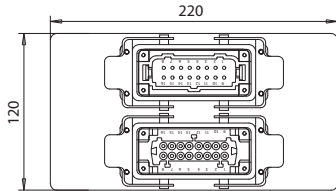
| N. plug<br>N prese | Q.ty poles<br>Q.tà poli            | code<br>Codice |
|--------------------|------------------------------------|----------------|
| n° 1               | 16 female poles<br>16 poli femmina | E09509         |
| n° 1               | 16 Male poles<br>16 poli maschio   | E05129         |



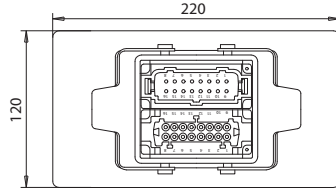
| N. plug<br>N prese | Q.ty poles<br>Q.tà poli            | code<br>Codice |
|--------------------|------------------------------------|----------------|
| n° 1               | 24 female poles<br>24 poli femmina | E09510         |
| n° 1               | 24 Male poles<br>24 poli maschio   | E05131         |



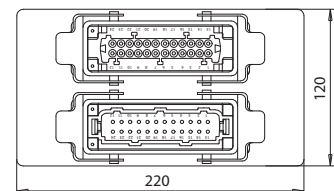
| N. plug<br>N prese | Q.ty poles<br>Q.tà poli            | code<br>Codice |
|--------------------|------------------------------------|----------------|
| n° 1               | 16 female poles<br>16 poli femmina | E08102         |
| n° 1               | 16 Male poles<br>16 poli maschio   |                |



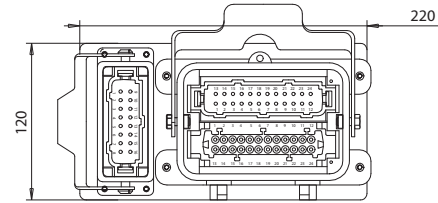
| N. plug<br>N prese | Q.ty poles<br>Q.tà poli  | code<br>Codice |
|--------------------|--|----------------|
| n° 1               | 16 female poles<br>16 poli femmina +<br>16 Male poles<br>16 poli maschio | E05134         |



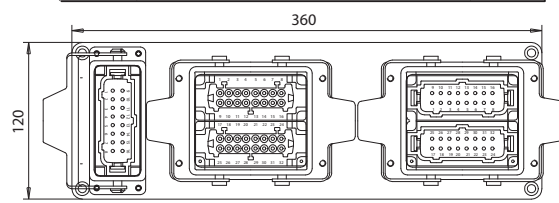
| N. plug<br>N prese | Q.ty poles<br>Q.tà poli            | code<br>Codice |
|--------------------|------------------------------------|----------------|
| n° 1               | 24 female poles<br>24 poli femmina | E05137         |
| n° 1               | 24 Male poles<br>24 poli maschio   |                |



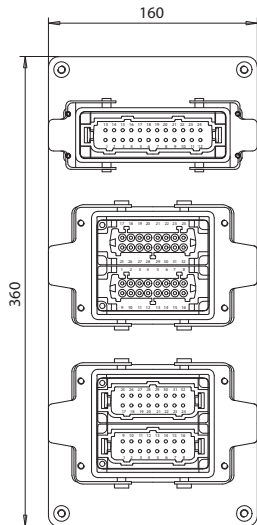
| N. plug<br>N prese | Q.ty poles / Q.tà poli              |                 | code<br>Codice |
|--------------------|-------------------------------------|-----------------|----------------|
| n° 1               | 24 female poles<br>24 poli femmina+ | 24 poli maschio | E05140         |
|                    | 24 Male poles<br>24 poli maschio    | 24 poli femmina |                |
| n° 1               | 16 Male poles<br>16 poli maschio    | 16 poli femmina |                |



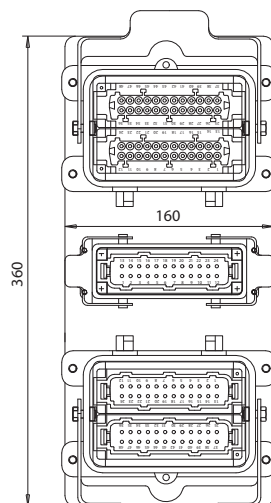
| N. plug<br>N prese | Q.ty poles / Q.tà poli             |                 | code<br>Codice |
|--------------------|------------------------------------|-----------------|----------------|
| n° 1               | 32 female poles<br>32 poli femmina | 32 poli maschio | E05143         |
| n° 1               | 32 Male poles<br>32 poli maschio   | 32 poli femmina |                |
| n° 1               | 16 Male poles<br>16 poli maschio   | 16 poli femmina |                |



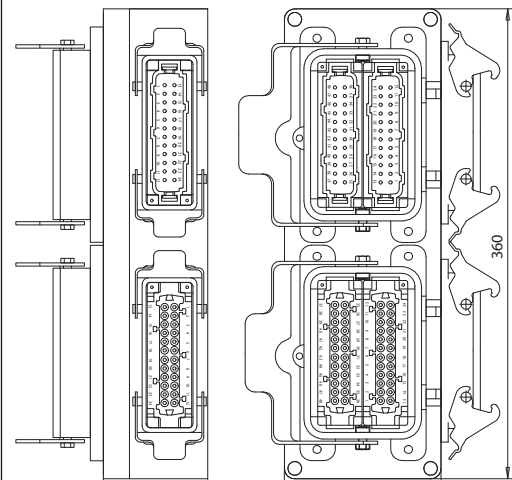
| N. plug<br>N prese | Q.ty poles<br>Q.tà poli            | code<br>Codice |
|--------------------|------------------------------------|----------------|
| n° 1               | 32 Male poles<br>32 poli maschio   | E05145         |
| n° 1               | 32 female poles<br>32 poli femmina |                |
| n° 1               | 24 Male poles<br>24 poli maschio   |                |



| N. plug<br>N prese | Q.ty poles<br>Q.tà poli            | code<br>Codice |
|--------------------|------------------------------------|----------------|
| n° 1               | 48 Male poles<br>48 poli maschio   | E05148         |
| n° 1               | 48 female poles<br>48 poli femmina |                |
| n° 1               | 24 Male poles<br>24 poli maschio   |                |



| N. plug<br>N prese | Q.ty poles<br>Q.tà poli            | code<br>Codice |
|--------------------|------------------------------------|----------------|
| n° 1               | 48 Male poles<br>48 poli maschio   | E05150         |
| n° 1               | 48 female poles<br>48 poli femmina |                |
| n° 1               | 24 Male poles<br>24 poli maschio   |                |
| n° 1               | 24 female poles<br>24 poli femmina |                |





| Qty / Q.tà | code / Codice                      | E05151 |
|------------|------------------------------------|--------|
| n°2        | 32 Female poles<br>32 poli femmina |        |
| n°2        | 32 Male poles<br>32 poli maschio   |        |
| n°1        | 24 Female poles<br>24 poli femmina |        |
| n°1        | 24 Male poles<br>24 poli maschio   |        |

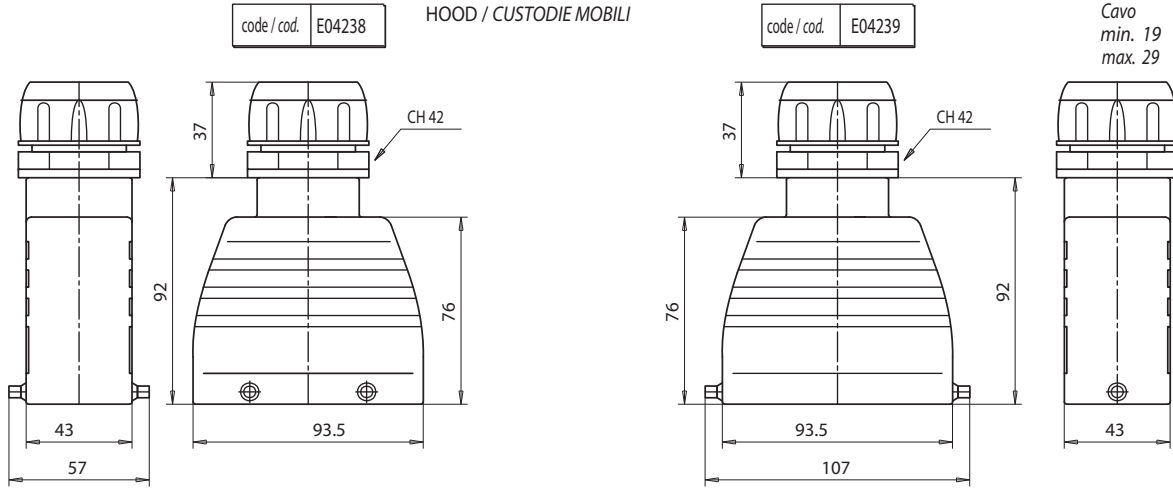
| Qty / Q.tà | code / Codice                      | E05152 |
|------------|------------------------------------|--------|
| n°2        | 48 female poles<br>48 poli femmina |        |
| n°2        | 48 male poles<br>48 poli maschio   |        |

| Qty / Q.tà | code / Codice                      | E05155 |
|------------|------------------------------------|--------|
| n°2        | 48 Male poles<br>48 poli maschio   |        |
| n°2        | 48 Female poles<br>48 poli femmina |        |
| n°1        | 24 Male poles<br>24 poli maschio   |        |
| n°1        | 24 Female poles<br>24 poli femmina |        |



ELECTRICAL CONNECTOR CONNESSIONI ELETTRICHE  
6 poles - 240V - 35A 6 poli - 240V - 35A

Cables  
min. 19  
max. 29  
Cavo  
min. 19  
max. 29

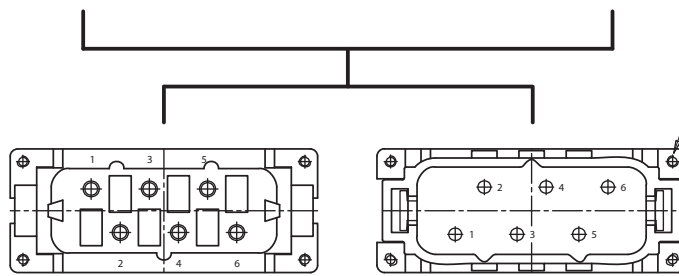


RECEPTACLE / FRUTTO FEMMINA

code / cod. E04213

BASE / CUSTODIA FISSA

code / cod. E04236



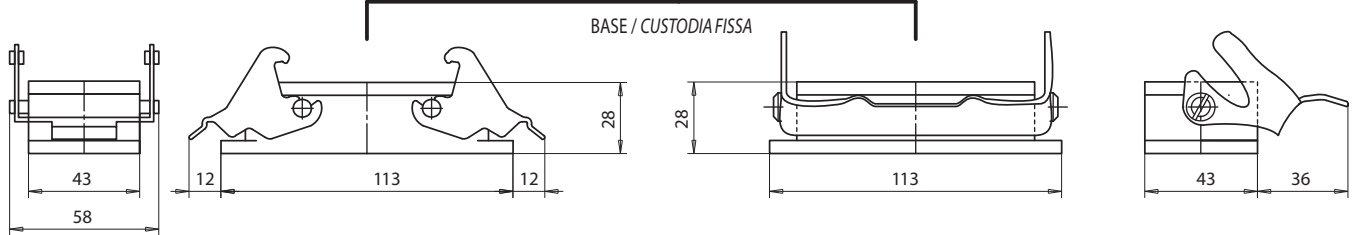
Mounting screw  
vite fissaggio frutto

PLUG / FRUTTO MASCHIO

code / cod. E04212

BASE / CUSTODIA FISSA

code / cod. E04237



CODING PIN FEMALE  
PERNO ORIENTAMENTO FEMMINA

code / cod. E04254



Where several plugs are mounted adjacent to one another, substitute these pins to avoid errors.

Sostituire alle viti di fissaggio frutto uno o più perni di orientamento maschio e femmina per evitare montaggi errati.

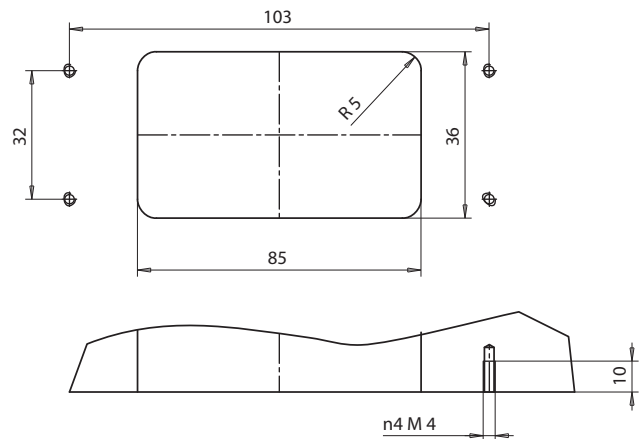


CODING PIN MALE  
PERNO ORIENTAMENTO MASCHIO

code / cod. E04253

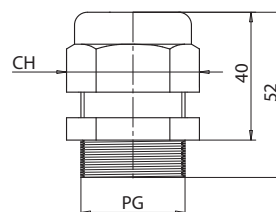
Layout to attach base to mold  
Schema per sede custodia fissa da eseguire sullo stampo

To mount base use n4 screws M4x12 UNI 5931  
Per il fissaggio delle custodie utilizzare n4 M4x12 UNI 5931



STRAIN RELIEF FITTING / PRESSACAVO DI RICAMBIO

| code / cod. | Cables / Cavo |     | PG   | CH |
|-------------|---------------|-----|------|----|
|             | min           | max |      |    |
| E11119      | 13            | 18  | PG21 | 36 |
| E11120      | 18            | 25  | PG18 | 42 |





ELECTRICAL CONNECTOR  
10 poles - 240V - 16A

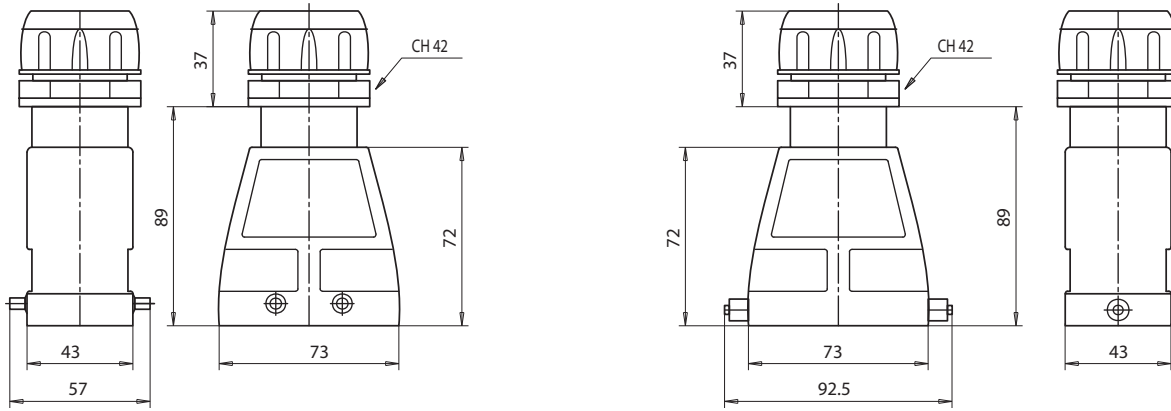
CONNESSIONI ELETTRICHE  
10 poli - 240V - 16A

Cables  
min. 19  
max. 29  
Cavo  
min. 19  
max. 29

code / cod. E04232

HOOD / CUSTODIE MOBILI

code / cod. E04233

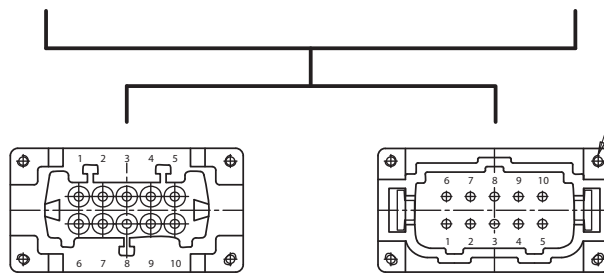


RECEPTACLE / FRUTTO FEMMINA

code / cod. E04215

BASE / CUSTODIA FISSA

code / cod. E04230



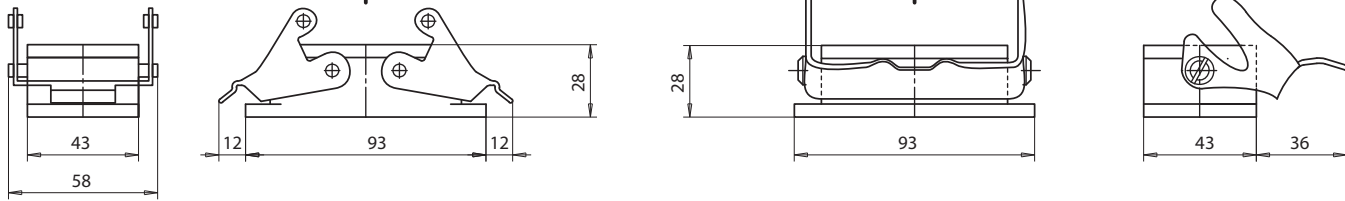
Mounting screw  
vite fissaggio frutto

PLUG / FRUTTO MASCHIO

code / cod. E04214

BASE / CUSTODIA FISSA

code / cod. E04231



CODING PIN FEMALE  
PERNO ORIENTAMENTO FEMMINA

code / cod. E04254



Where several plugs are mounted adjacent to one another, substitute these pins to avoid errors.

Sostituire alle viti di fissaggio frutto uno o più perni di orientamento maschio e femmina per evitare montaggi errati.

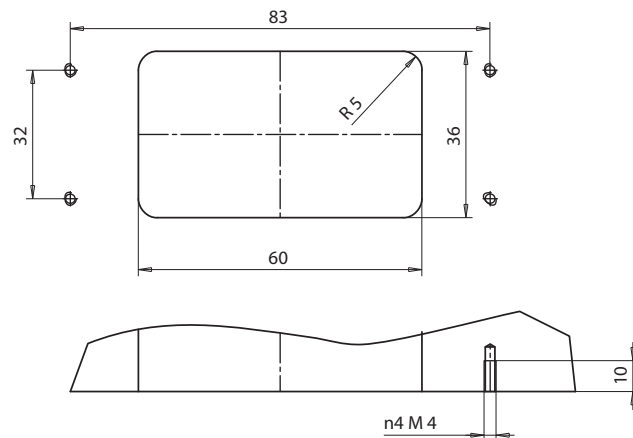
CODING PIN MALE  
PERNO ORIENTAMENTO MASCHIO

code / cod. E04253



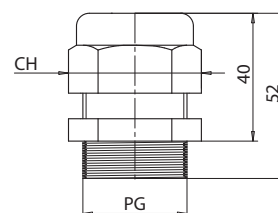
Layout to attach base to mold  
Schema per sede custodia fissa da eseguire sullo stampo

To mount base use n4 screws M4x12 UNI 5931  
Per il fissaggio delle custodie utilizzare n4 M4x12 UNI 5931



STRAIN RELIEF FITTING / PRESSACAVO DI RICAMBIO

| code / cod. | Cables / Cavo |     | PG   | CH |
|-------------|---------------|-----|------|----|
|             | min           | max |      |    |
| E11119      | 13            | 18  | PG21 | 36 |
| E11120      | 18            | 25  | PG18 | 42 |





ELECTRICAL CONNECTOR  
12 poles - 240V - 35A

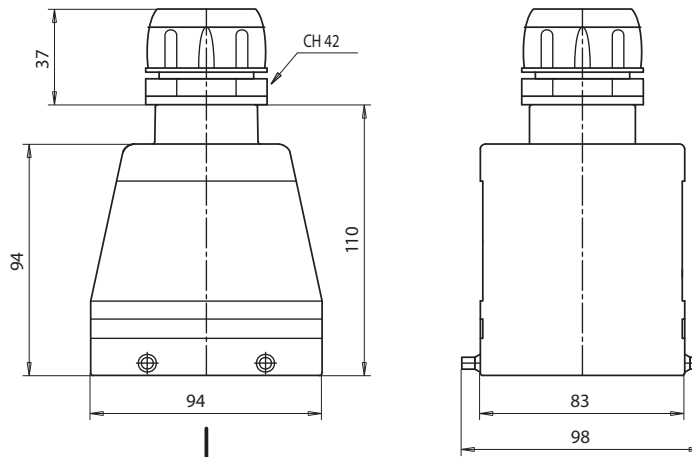
CONNESSIONI ELETTRICHE  
12 poli - 240V - 35A

Cables  
min. 19  
max. 29

Cavo  
min. 19  
max. 29

HOOD / CUSTODIE MOBILI

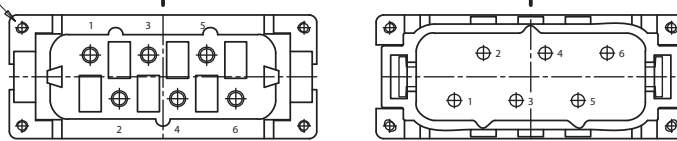
code / cod. E04245



Mounting screw  
vite fissaggio frutto

RECEPTACLE / FRUTTO FEMMINA

code / cod. E04213

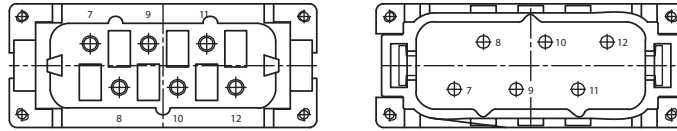


PLUG / FRUTTO MASCHIO

code / cod. E04212

RECEPTACLE / FRUTTO FEMMINA

code / cod. E04217

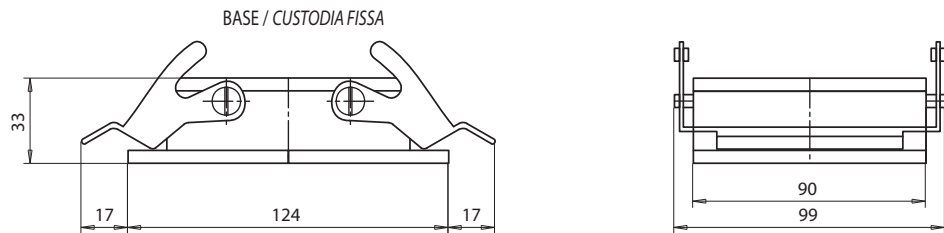


PLUG / FRUTTO MASCHIO

code / cod. E04216

BASE / CUSTODIA FISSA

code / cod. E04244



CODING PIN FEMALE  
PERNO ORIENTAMENTO FEMMINA

code / cod. E04254



Where several plugs are mounted adjacent to one another, substitute these pins to avoid errors.

Sostituire alle viti di fissaggio frutto uno o più perni di orientamento maschio e femmina per evitare montaggi errati.

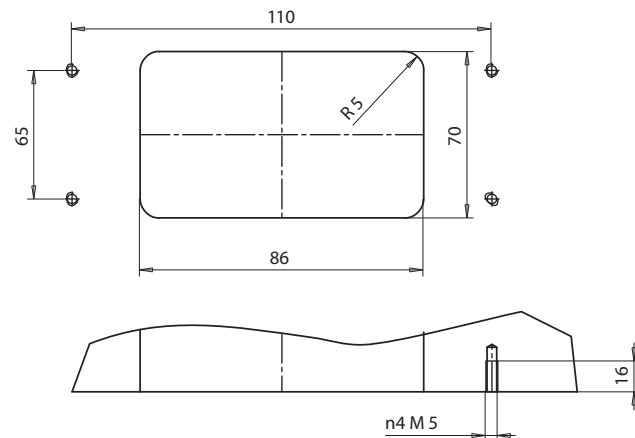


CODING PIN MALE  
PERNO ORIENTAMENTO MASCHIO

code / cod. E04253

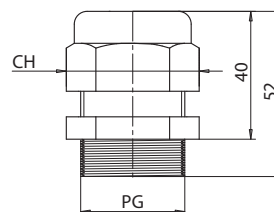
Layout to attach base to mold  
Schema per sede custodia fissa da eseguire sullo stampo

To mount base use n 4 screws M5x12 UNI 5931  
Per il fissaggio delle custodie utilizzare n4 M5x12 UNI 5931



STRAIN RELIEF FITTING / PRESSACAVO DI RICAMBIO

| code / cod. | Cables / Cavo |     | PG   | CH |
|-------------|---------------|-----|------|----|
|             | min           | max |      |    |
| E11119      | 13            | 18  | PG21 | 36 |
| E11120      | 18            | 25  | PG18 | 42 |





ELECTRICAL CONNECTOR  
16 poles - 240V - 16A

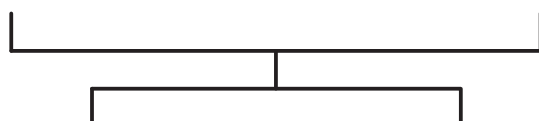
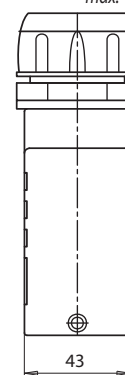
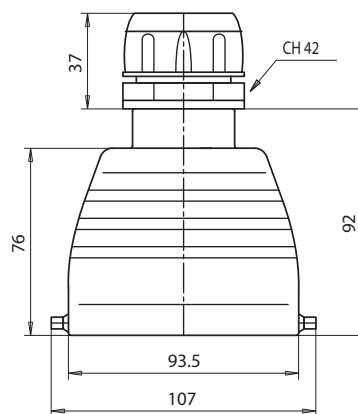
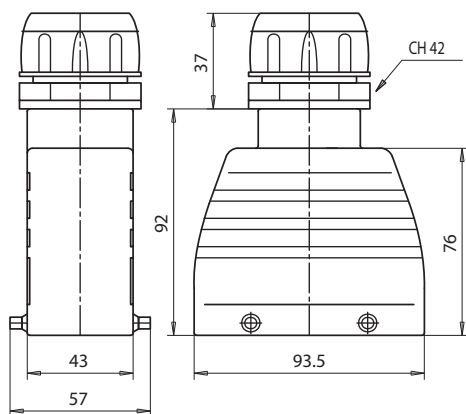
CONNESSIONI ELETTRICHE  
16 poli - 240V - 16A

Cables  
min. 19  
max. 29  
Cavo  
min. 19  
max. 29

code / cod. E04238

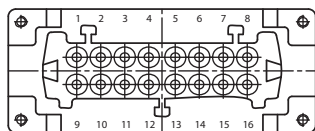
HOOD / CUSTODIE MOBILI

code / cod. E04239



RECEPTACLE / FRUTTO FEMMINA

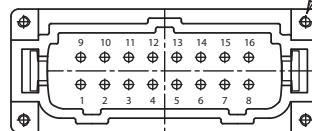
code / cod. E04219



Mounting screw  
vite fissaggio frutto

PLUG / FRUTTO MASCHIO

code / cod. E04218



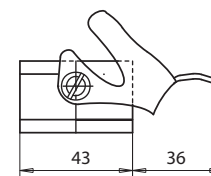
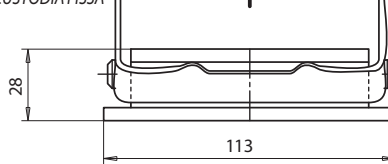
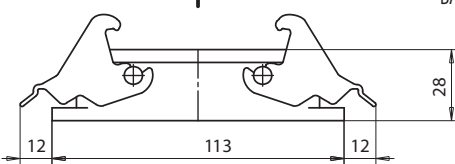
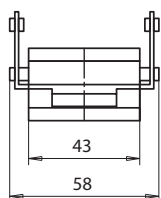
BASE / CUSTODIA FISSA

code / cod. E04237

BASE / CUSTODIA FISSA

code / cod. E04236

BASE / CUSTODIA FISSA



CODING PIN FEMALE  
PERNO ORIENTAMENTO FEMMINA

code / cod. E04254



Where several plugs are mounted adjacent to one another, substitute these pins to avoid errors.

Sostituire alle viti di fissaggio frutto uno o più perni di orientamento maschio e femmina per evitare montaggi errati.

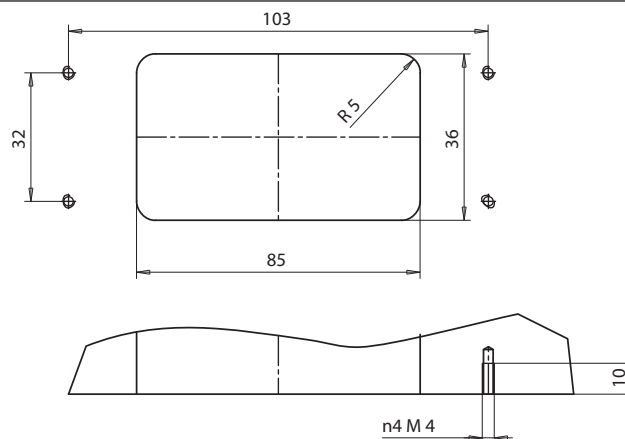


CODING PIN MALE  
PERNO ORIENTAMENTO MASCHIO

code / cod. E04253

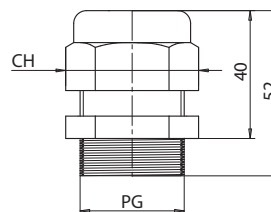
Layout to attach base to mold  
Schema per sede custodia fissa da eseguire sullo stampo

To mount base use n 4 screws M4x12 UNI 5931  
Per il fissaggio delle custodie utilizzare n4 M5x12 UNI 5931



STRAIN RELIEF FITTING / PRESSACAPO DI RICAMBIO

| code / cod. | Cables / Cavo |     | PG   | CH |
|-------------|---------------|-----|------|----|
|             | min           | max |      |    |
| E11119      | 13            | 18  | PG21 | 36 |
| E11120      | 18            | 25  | PG18 | 42 |



# CONNECTORS / SET DI CONNESSIONI



ELECTRICAL CONNECTOR  
24 poles - 240V - 16A

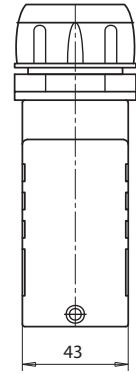
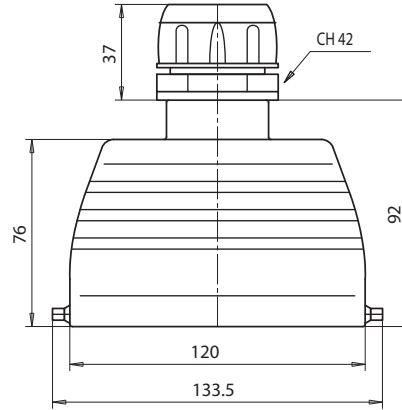
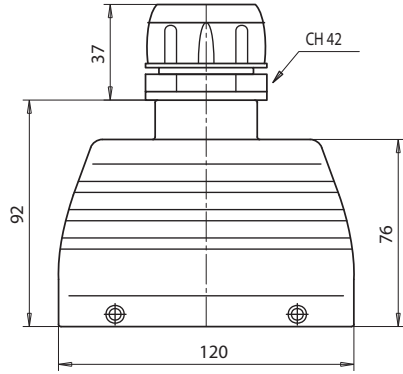
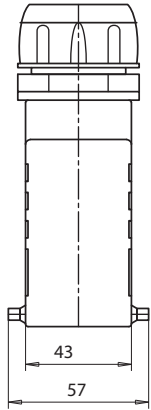
CONNESSIONI ELETTRICHE  
24 poli - 240V - 16A

Cables  
min. 19  
max. 29  
  
Cavo  
min. 19  
max. 29

code / cod. E04242

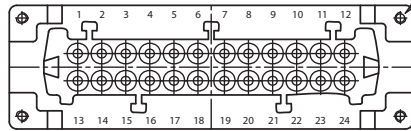
HOOD / CUSTODIE MOBILI

code / cod. E04243



RECEPTACLE / FRUTTO FEMMINA

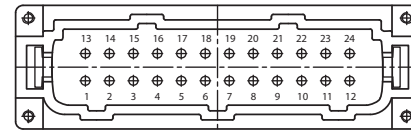
code / cod. E04221



Mounting screw  
vite fissaggio frutto

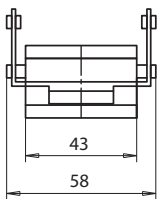
PLUG / FRUTTO MASCHIO

code / cod. E04220



BASE / CUSTODIA FISSA

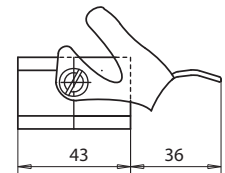
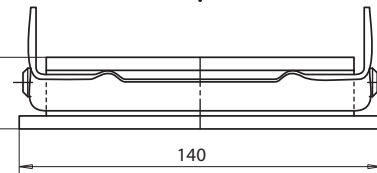
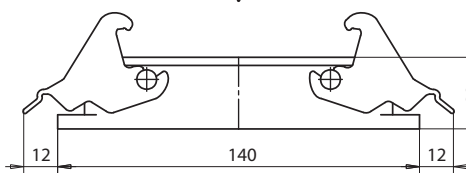
code / cod. E04240



BASE / CUSTODIA FISSA

BASE / CUSTODIA FISSA

code / cod. E04241



CODING PIN FEMALE  
PERNO ORIENTAMENTO FEMMINA

code / cod. E04254



Where several plugs are mounted adjacent to one another, substitute these pins to avoid errors.

Sostituire alle viti di fissaggio frutto uno o più perni di orientamento maschio e femmina per evitare montaggi errati.

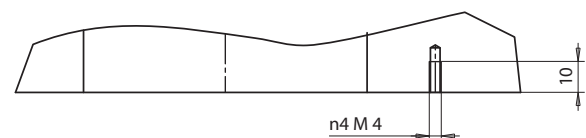
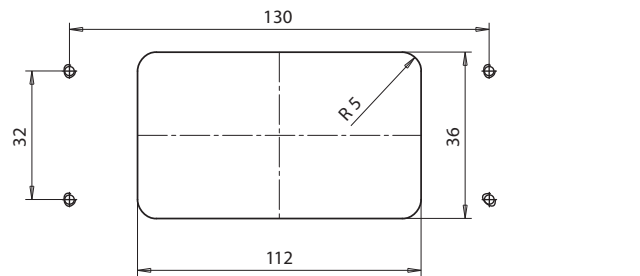


CODING PIN MALE  
PERNO ORIENTAMENTO MASCHIO

code / cod. E04253

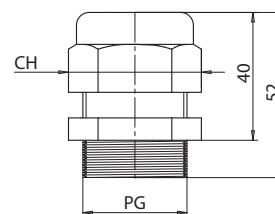
Layout to attach base to mold  
Schema per sede custodia fissa da eseguire sullo stampo

To mount base use n 4 screws M4x12 UNI 5931  
Per il fissaggio delle custodie utilizzare n4 M4x12 UNI 5931



STRAIN RELIEF FITTING / PRESSACAVO DI RICAMBIO

| code / cod. | Cables / Cavo |     | PG   | CH |
|-------------|---------------|-----|------|----|
|             | min           | max |      |    |
| E11119      | 13            | 18  | PG21 | 36 |
| E11120      | 18            | 25  | PG18 | 42 |



# CONNECTORS / SET DI CONNESSIONI



ELECTRICAL CONNECTOR  
32 poles - 240V - 16A

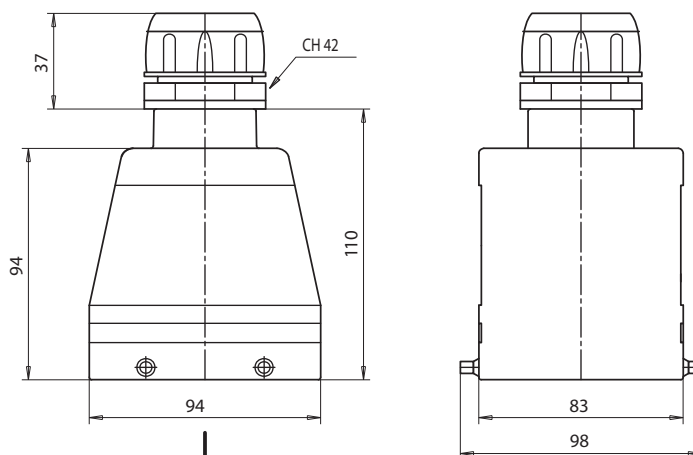
CONNESSIONI ELETTRICHE  
32 poli - 240V - 16A

Cables  
min. 19  
max. 29

Cavo  
min. 19  
max. 29

HOOD / CUSTODIE MOBILI

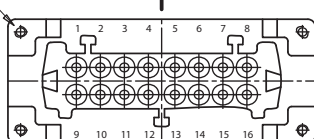
code / cod. E04245



Mounting screw  
vite fissaggio frutto

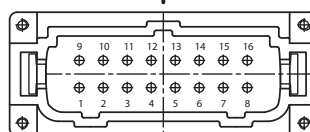
RECEPTACLE / FRUTTO FEMMINA

code / cod. E04219



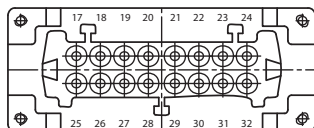
PLUG / FRUTTO MASCHIO

code / cod. E04218



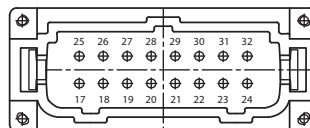
RECEPTACLE / FRUTTO FEMMINA

code / cod. E05142



PLUG / FRUTTO MASCHIO

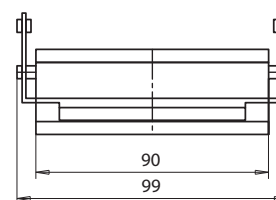
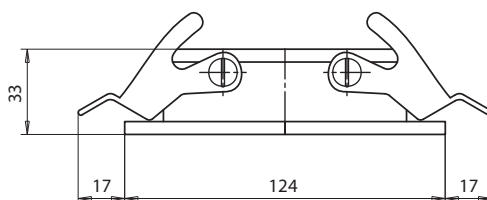
code / cod. E05141



BASE / CUSTODIA FISSA

BASE / CUSTODIA FISSA

code / cod. E04244



CODING PIN FEMALE  
PERNO ORIENTAMENTO FEMMINA

code / cod. E04254



Where several plugs are mounted adjacent to one another, substitute these pins to avoid errors.

Sostituire alle viti di fissaggio frutto uno o più perni di orientamento maschio e femmina per evitare montaggi errati.

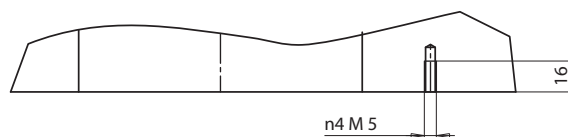
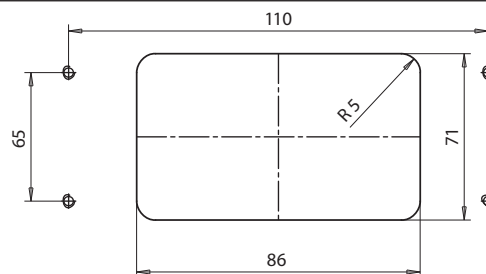
CODING PIN MALE  
PERNO ORIENTAMENTO MASCHIO

code / cod. E04253



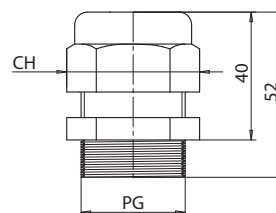
Layout to attach base to mold  
Schema per sede custodia fissa da eseguire sullo stampo

To mount base use n 4 screws M5x12 UNI 5931  
Per il fissaggio delle custodie utilizzare n4 M5x12 UNI 5931



STRAIN RELIEF FITTING / PRESSACAVO DI RICAMBIO

| code / cod. | Cables / Cavo |     | PG   | CH |
|-------------|---------------|-----|------|----|
|             | min           | max |      |    |
| E11119      | 13            | 18  | PG21 | 36 |
| E11120      | 18            | 25  | PG18 | 42 |







ELECTRICAL CONNECTOR  
48 poles - 240V - 16A

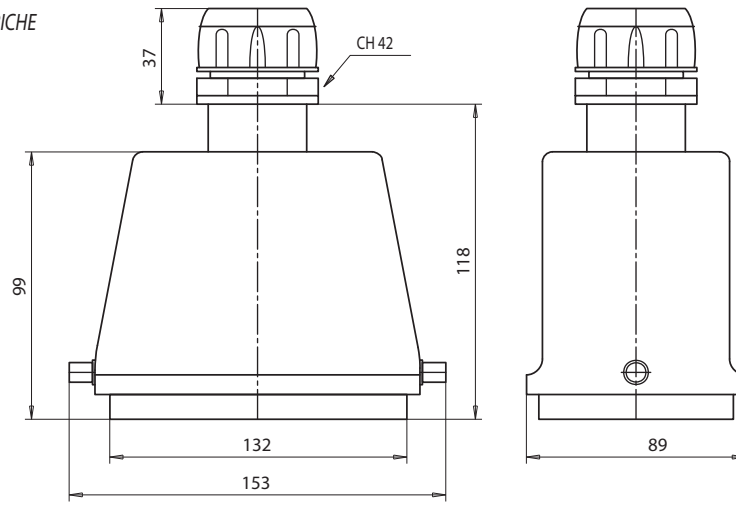
CONNESSIONI ELETTRICHE  
48 poli - 240V - 16A

Cables  
min. 19  
max. 29

Cavo  
min. 19  
max. 29

HOOD / CUSTODIE MOBILI

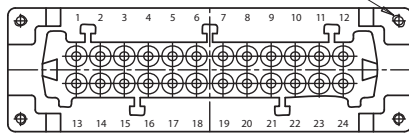
code / cod. E04247



Mounting screw  
vite fissaggio frutto

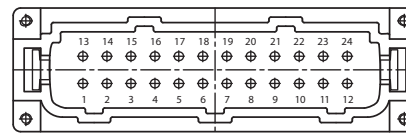
RECEPTACLE / FRUTTO FEMMINA

code / cod. E04221



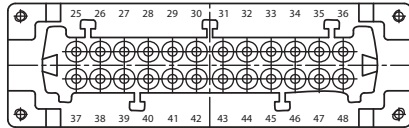
PLUG / FRUTTO MASCHIO

code / cod. E04220



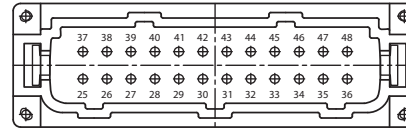
RECEPTACLE  
FRUTTO FEMMINA

code / cod. E05147



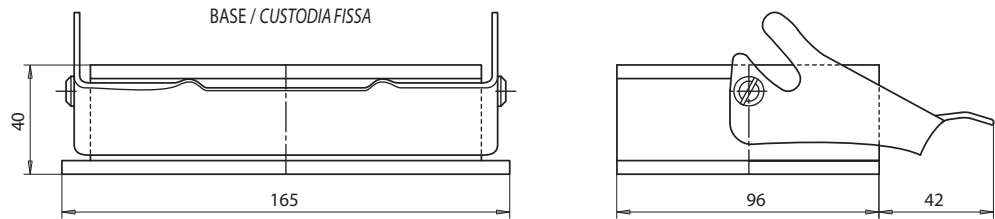
PLUG / FRUTTO MASCHIO

code / cod. E05146



BASE / CUSTODIA FISSA

code / cod. E04246



CODING PIN FEMALE  
PERNO ORIENTAMENTO FEMMINA

code / cod. E04254



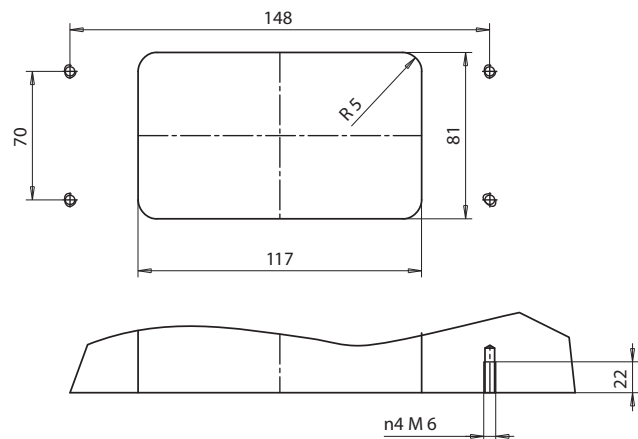
Where several plugs are mounted adjacent to one another, substitute these pins to avoid errors.  
Sostituire alle viti di fissaggio frutto uno o più perni di orientamento maschio e femmina per evitare montaggi errati.



CODING PIN MALE  
PERNO ORIENTAMENTO MASCHIO

code / cod. E04253

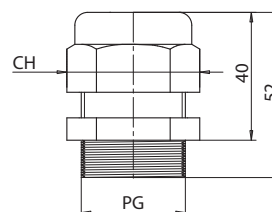
Layout to attach base to mold  
Schema per sede custodia fissa da eseguire sullo stampo



To mount base use n 4 screws M6x12 UNI 5931  
Per il fissaggio delle custodie utilizzare n4 M6x12 UNI 5931

STRAIN RELIEF FITTING / PRESSACAVO DI RICAMBIO

| code / cod. | Cables / Cavo |     | PG   | CH |
|-------------|---------------|-----|------|----|
|             | min           | max |      |    |
| E11119      | 13            | 18  | PG21 | 36 |
| E11120      | 18            | 25  | PG18 | 42 |



# CONNECTORS / SET DI CONNESSIONI



ELECTRICAL CONNECTOR  
48 poles - 240V - 16A

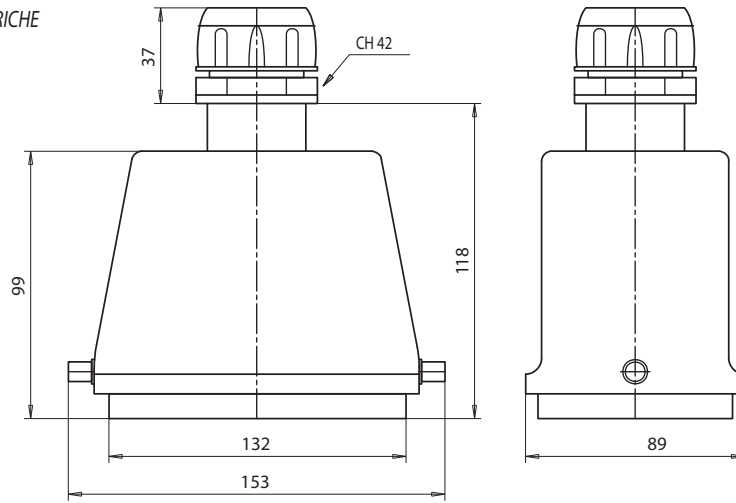
CONNESSIONI ELETTRICHE  
48 poli - 240V - 16A

Cables  
min. 19  
max. 29

Cavo  
min. 19  
max. 29

HOOD / CUSTODIE MOBILI

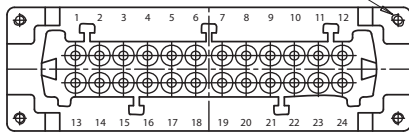
code / cod. E04247



Mounting screw  
vite fissaggio frutto

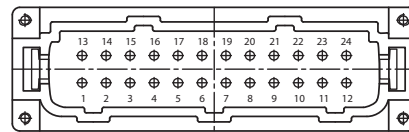
RECEPTACLE / FRUTTO FEMMINA

code / cod. E04221



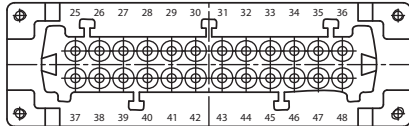
PLUG / FRUTTO MASCHIO

code / cod. E04220



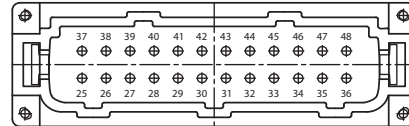
RECEPTACLE  
FRUTTO FEMMINA

code / cod. E05147



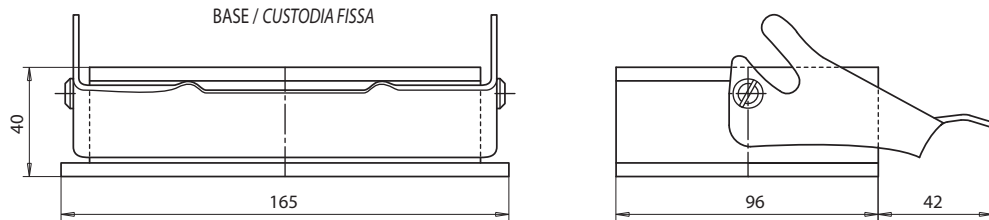
PLUG / FRUTTO MASCHIO

code / cod. E05146



BASE / CUSTODIA FISSA

code / cod. E04246



CODING PIN FEMALE  
PERNO ORIENTAMENTO FEMMINA

code / cod. E04254



Where several plugs are mounted adjacent to one another, substitute these pins to avoid errors.

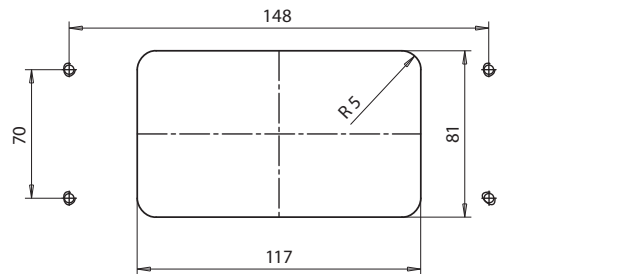
Sostituire alle viti di fissaggio frutto uno o più perni di orientamento maschio e femmina per evitare montaggi errati.

CODING PIN MALE  
PERNO ORIENTAMENTO MASCHIO

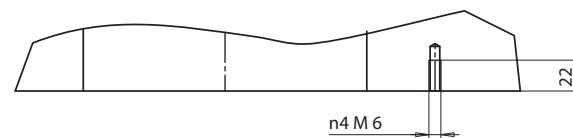
code / cod. E04253



Layout to attach base to mold  
Schema per sede custodia fissa da eseguire sullo stampo

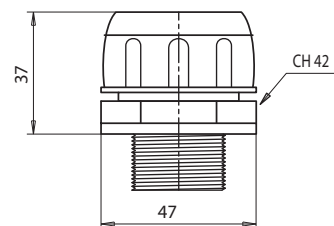


To mount base use n 4 screws M6x12 UNI 5931  
Per il fissaggio delle custodie utilizzare n4 M6x12 UNI 5931



STRAIN RELIEF FITTING / PRESSACAVO DI RICAMBIO

code / cod. E04252



Cable  
min. 19  
max. 29

Cavo  
min. 19  
max. 29

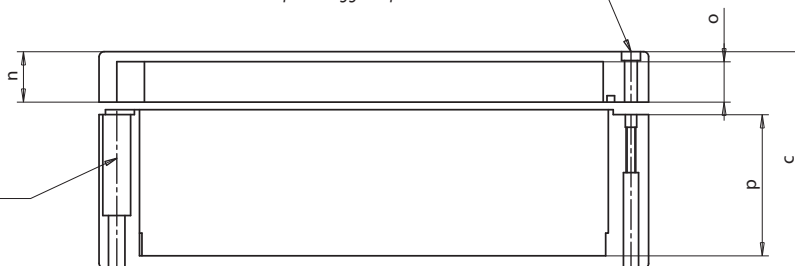


TERMINAL MOUNTING BOX / CUSTODIE

Material / Materiale Alluminium / Alluminio

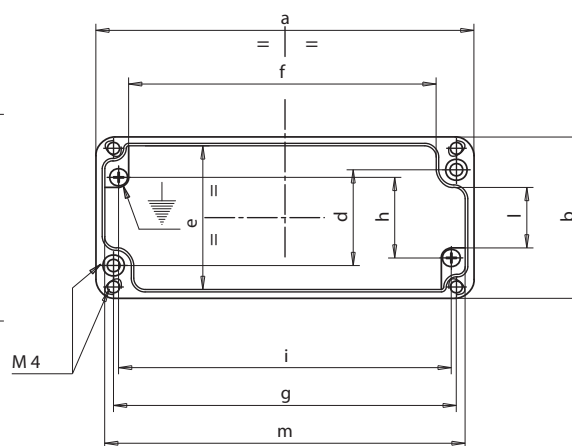
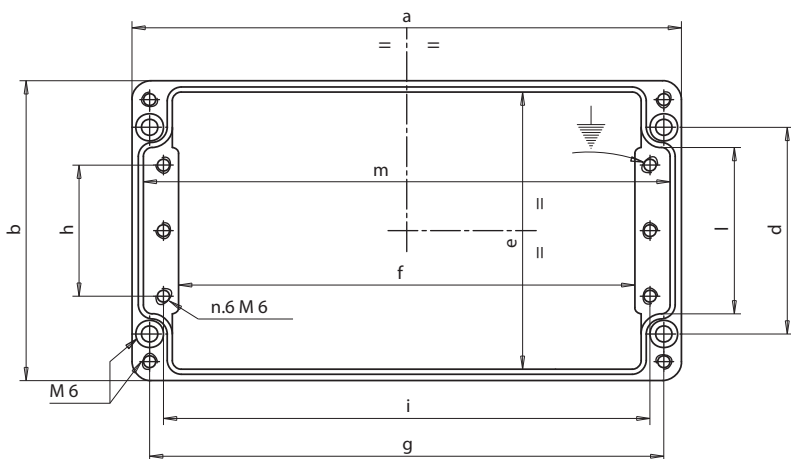
Screw hole M4/M6 to mount cover  
Sede vite M4/M6 per fissaggio coperchio

Screw hole M4/M6 to mount terminal box  
Sede vite M4/M6 per fissaggio custodia



Type / Tipo A

Type / Tipo B



| code / cod. | Type/Tipo | a   | b   | c   | d   | e   | f   | g   | h   | i   | l   | m   | n  | o    | p    |
|-------------|-----------|-----|-----|-----|-----|-----|-----|-----|-----|-----|-----|-----|----|------|------|
| E04384      | A         | 360 | 120 | 80  | 82  | 111 | 328 | 344 | 52  | 333 | 66  | 351 | 20 | 16.5 | 56.5 |
| E04385      |           | 220 |     |     |     |     | 188 | 204 |     | 193 |     | 211 |    |      |      |
| E04386      |           | 160 | 160 | 90  | 110 | 151 | 120 | 140 | 76  | 130 | 90  | 151 |    |      |      |
| E05144      |           | 360 |     |     |     |     | 320 | 340 | 330 | 351 |     |     |    |      |      |
| E05153      |           | 330 | 230 | 180 | 181 | 221 | 290 | 310 | 144 | 300 | 160 | 318 |    | 15   | 155  |
| E04387      | B         | 250 | 80  | 52  | 52  | 72  | 224 | 238 | 48  | 230 | 40  | 242 | 12 | 8.5  | 36.5 |
| E04388      |           | 150 | 64  | 34  | 36  | 56  | 126 | 138 | 32  | 132 | 24  | 142 | 9  | 5.5  | 21.5 |
| E05127      |           | 175 | 80  | 57  | 52  | 72  | 147 | 163 | 30  | 156 | 50  | 167 | 15 | 11.5 | 38.5 |

APPLICATION EXAMPLES OF TERMINAL MOUNTING BOX / ESEMPI DI APPLICAZIONI DELLE CUSTODIE

