

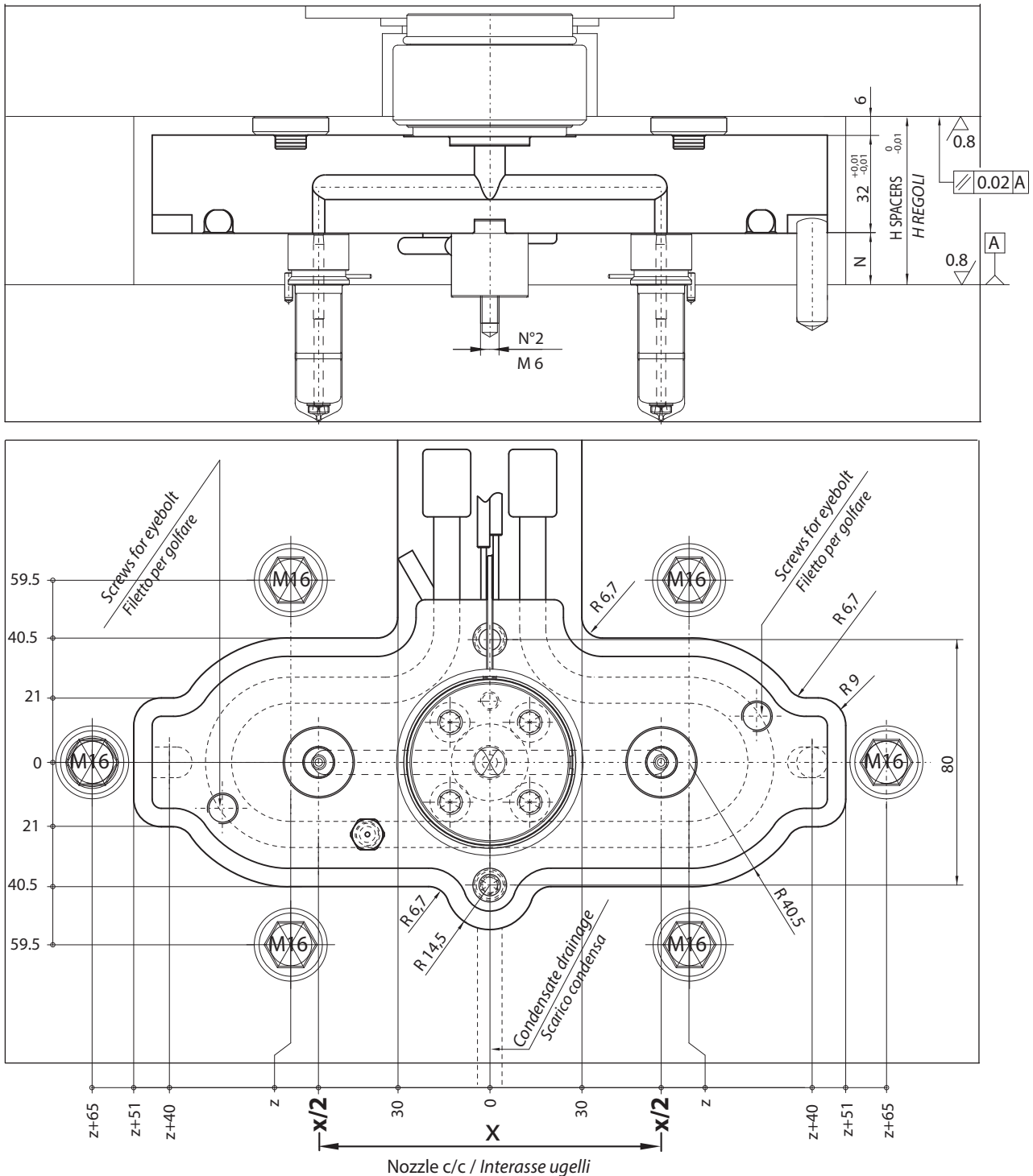


**CONFIGURABLE SYSTEMS**

Create the configuration on [www.thermoplay.com](http://www.thermoplay.com)

**SISTEMI A CANALE CALDO CONFIGURABILI**

Creare la configurazione su [www.thermoplay.com](http://www.thermoplay.com)



x = relative dimension to the position of nozzles / *relativa a posizione ugelli*  
 z = relative dimension to the external shape of manifold / *relativa a contorno esterno distributore*

**H Spacers / H regoli = (N + 32 + 6) + [(N + 32 + 6) · ΔT · k] - 0.05 = mm**

N = nozzle head / *testa ugelli*

Δt = Temperature difference between the hot runner and the mould / *differenza di temperatura tra camera calda e stampo*

K = Steel thermal expansion coefficient / *coefficiente di dilatazione termica dell'acciaio* (= 0.000125)



CONFIGURABLE SYSTEMS  
SISTEMI A CANALE CALDO CONFIGURABILI

Manifold / Piastra				Heater / Resistenza						Thermocouple Termocoppia		
1 Code 1 Codice piastra	Nozzle c/c Interasse	Thermocouple type Tipo termocoppia	z	Heaters not armored Resistenze non corazzate			Armored heaters <sup>3</sup> Resistenze corazzate <sup>3</sup>			grounded a massa	insulated isolata	Qty / Q.tà
				Code Codice	Power <sup>2</sup> Potenza [W]	Qty Q.tà	Code Codice	Power <sup>2</sup> Potenza [W]	Qty Q.tà			
E90100	90 < x ≤ 100	JG= Grounded thermocouples J type / Termocoppie tipo J a massa JU = Insulated thermocouple J type / Termocoppie tipo J isolate	50	TS076	800	1	TS052	1300	1	E06145	E16058	1
E90101	100 < x ≤ 110		55	TS077	800		TS045	1400				
E90102	110 < x ≤ 120		60	TS078	900		TS057	1600				
E90103	120 < x ≤ 130		65	TS079	900		TS058	1900				
E90108	130 < x ≤ 140		70	TS112	900		TS005	2300				
E90112	140 < x ≤ 150		75	TS080	1000		TS047	1500				
E90116	150 < x ≤ 160		80	TS081	1000		TS059	2100				
E90117	160 < x ≤ 170		85	TS082	1100		TS007	2400				
E90121	170 < x ≤ 180		90	TS083	1100		TS060	2200				
E90298	180 < x ≤ 190		95	TS084	1200		TS008	2400				
E90125	190 < x ≤ 200		100	TS085	1200		TS046	2200				
E90299	200 < x ≤ 210		105	TS086	1400		TS009	2400				
E90129	210 < x ≤ 220		110	TS087	1500		TS146	2000				
E90300	220 < x ≤ 230		115	TS113	1600		TS061	2400				
E90133	230 < x ≤ 240		120	TS089	1600		TS011	2700				
E90141	240 < x ≤ 250		125	TS090	1700		TS012	2500				
E90145	250 < x ≤ 260		130	TS091	1700		TS062	2500				
E90297	260 < x ≤ 270		135	TS092	1800		TS063	2700				
E90149	270 < x ≤ 280		140	TS093	1800		TS014	3300				
E90301	280 < x ≤ 290		145	TS094	1800		TS174	2200				
E90120	290 < x ≤ 300		150	TS095	1900		TS015	3100				
E90302	300 < x ≤ 310		155	TS096	2100		TS016	3200				
E90157	310 < x ≤ 320		160	TS097	2000		TS065	3100				
E90303	320 < x ≤ 330		165	TS098	2200		TS017	3100				
E90161	330 < x ≤ 340		170	TS099	2100		TS018	3300				
E90165	340 < x ≤ 350		175	TS114	2200		TS176	3000				
E90169	350 < x ≤ 360		180	TS101	2200		TS067	3200				
E90304	360 < x ≤ 370		185	TS102	2200		TS020	3200				
E90173	370 < x ≤ 380		190	TS103	2400		TS068	3300				
E90351	380 < x ≤ 390		195	TS021	3200		TS021	3200				
E90177	390 < x ≤ 400	200	TS115	2900	TS022	3200						
E90352	400 < x ≤ 410	205	TS106	3000	TS070	3200						
E90353	410 < x ≤ 420	210	TS023	3200	TS023	3200						
E90354	420 < x ≤ 430	215	TS107	3100	TS024	3300						
E90355	430 < x ≤ 440	220	TS116	2600	TS071	3300						
E90181	440 < x ≤ 450	225	TS109	2600	TS025	3300						
E90356	450 < x ≤ 460	230	TS118	3000	TS175	3400						
E90357	460 < x ≤ 470	235	TS027	3300	TS177	3500						
E90358	470 < x ≤ 480	240	TS119	3400	TS119	3400						
E90359	480 < x ≤ 490	245	TS028	3300	TS140	3500						
E90150	490 < x ≤ 500	250	TS029	3300	TS029	3300						

<sup>1</sup> Not valid code for order / Non valido come codice d'ordine

<sup>2</sup> Nominal power referred to each single heater / Potenza nominale riferita ad ogni singolo elemento riscaldante

<sup>3</sup> To be carried out at Thermoplay / Sostituzione da effettuare in Thermoplay

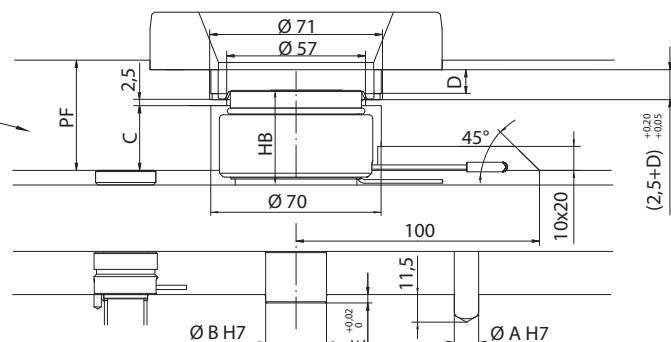
WARNING: according to the process temperature of the injected polymer, will be advised the suitable kind of manifold (with or without armored heaters).  
ATTENZIONE: in funzione della temperatura di processo del polimero utilizzato, verrà consigliata la tipologia di piastra di distribuzione idonea (con o senza resistenze corazzate).

Heat - treatable steel plate 110 Kg/mm<sup>2</sup>  
in alternative hardened steel HRC 42-46  
Piastra in acciaio bonificato 110 kg/mm<sup>2</sup>  
in alternativa acciaio temprato HRC 42-46

For dimension not specified  
consult Thermoplay catalogue  
in accessories section.

Per le quote non specificate  
consultare la sezione 16 -Accessori

HB	C	PF
22	11	18 + D
40	27	36 + D
46	27	36 + D
60	47	56 + D
84	71	80 + D



Further information have to be requested to Thermoplay's Technical Support - Per ulteriori informazioni consultare il Servizio Tecnico Thermoplay



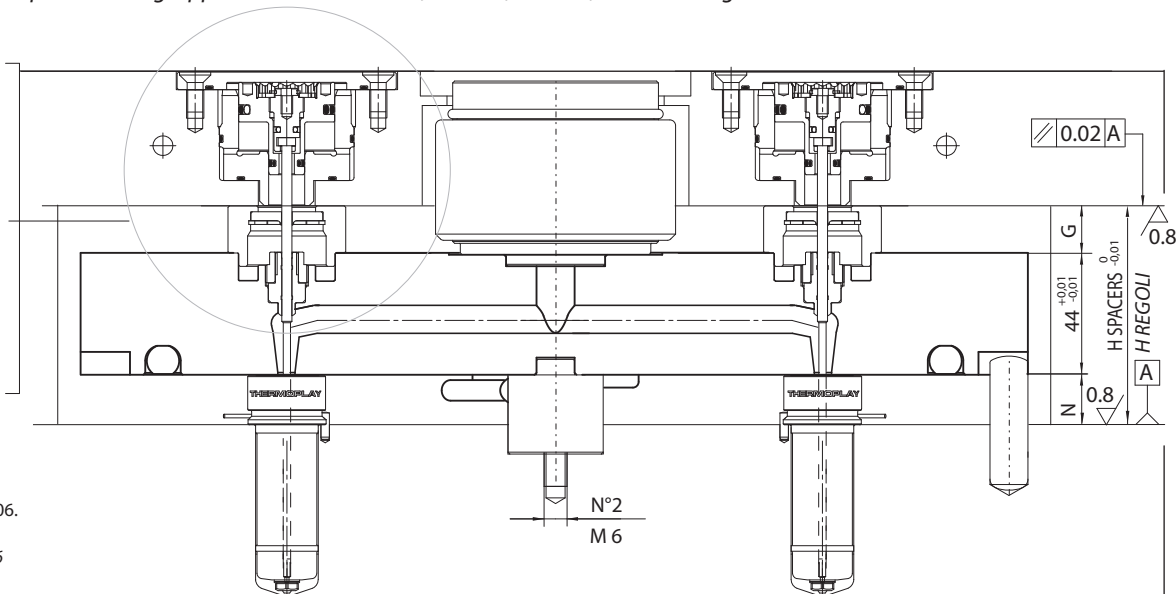
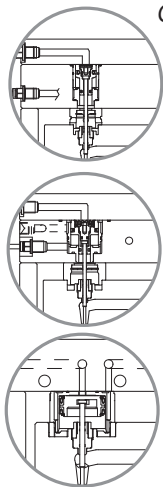
**CONFIGURABLE SYSTEMS**

Create the configuration on [www.thermoplay.com](http://www.thermoplay.com)

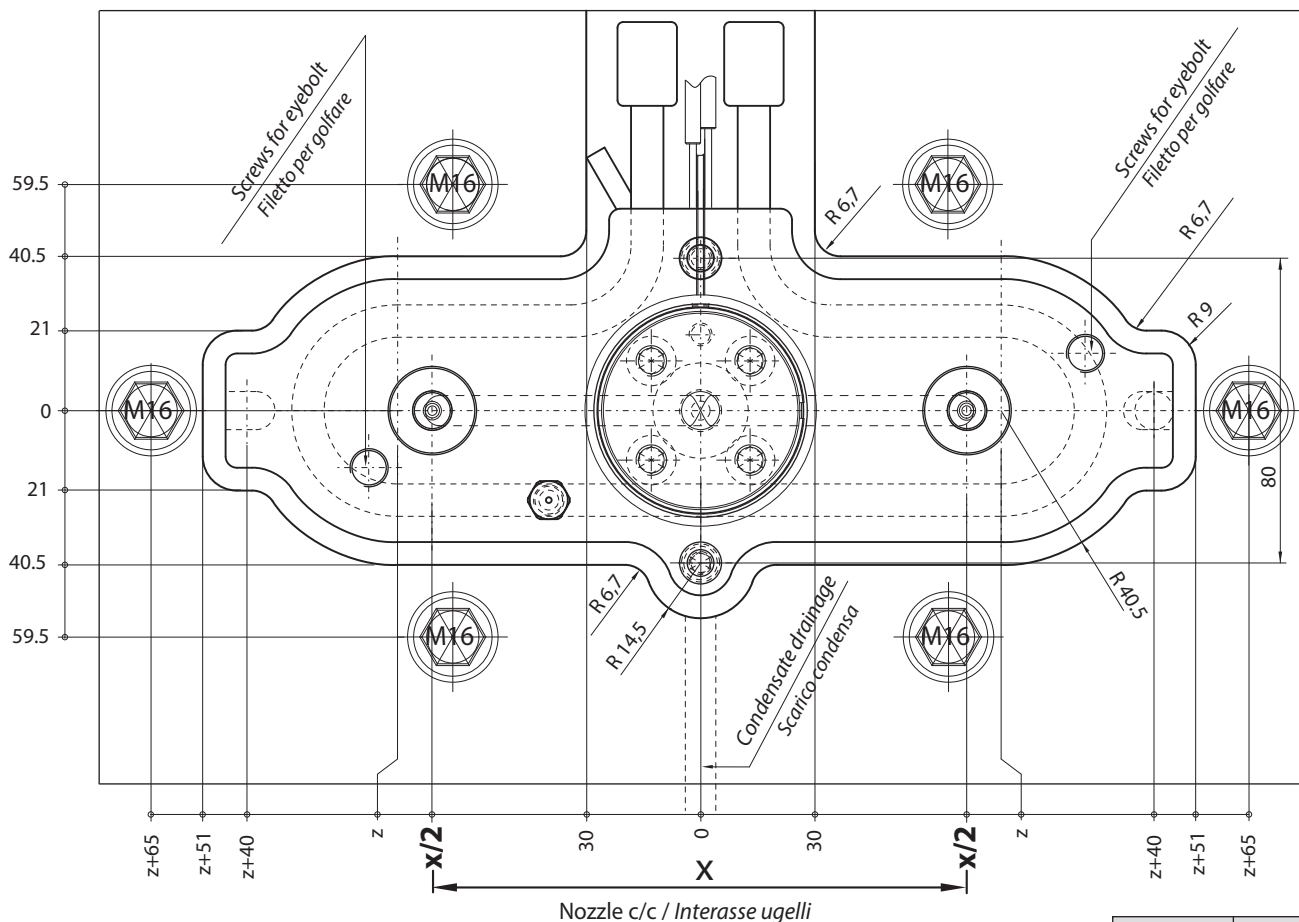
**SISTEMI A CANALE CALDO CONFIGURABILI**

Creare la configurazione su [www.thermoplay.com](http://www.thermoplay.com)

Compatible with shut off groups E18500, E19399, E18326, E18327 and nozzles types FN3 - FN3D - FN3B - DN3  
 Compatibile con gruppi otturazione E18500, E19399, E18326, E18327 ed ugelli FN3 - FN3D - FN3B - DN3



Information about shut off groups in section 06.  
 Informazioni sui gruppi otturazione nella sezione 06



x = relative dimension to the position of nozzles / relativa a posizione ugelli  
 z = relative dimension to the external shape of manifold / relativa a contorno esterno distributore

**H Spacers / H regoli = (N + 44 + G) + [(N + 44 + 6) · ΔT · k] - 0.05 = mm**

N = nozzle head / testa ugelli

Δt = Temperature difference between the hot runner and the mould / differenza di temperatura tra camera calda e stampo

K = Steel thermal expansion coefficient / coefficiente di dilatazione termica dell'acciaio (= 0.000125)

Shut off groupe Gr. ott	G
E18500	16
E18323	16
E18325	16
E18327	20
E18326	21.5



## CONFIGURABLE SYSTEMS / SISTEMI A CANALE CALDO CONFIGURABILI

Compatible with shut off groups E18500, E19399, E18326, E18327 and nozzles types FN3 - FN3D - FN3B - DN3  
 Compatibile con gruppi otturazione E18500, E19399, E18326, E18327 ed ugelli FN3 - FN3D - FN3B - DN3

Manifold / Piastra				Heater / Resistenza						Thermocouple / Termocoppia		
1 Code 1 Codice piastra	Nozzle c/c Interasse	Thermocouple type Tipo termocoppia	z	Heaters not armored Resistenze non corazzate			Armored heaters <sup>3</sup> Resistenze corazzate <sup>3</sup>			grounded a massa	insulated isolata	Q.ty / Q.tà
				Code Codice	Power <sup>2</sup> Potenza [W]	Q.ty Q.tà	Code Codice	Power <sup>2</sup> Potenza [W]	Q.ty Q.tà			
E94101 *	110	JG = Grounded thermocouples J type / Termocoppie tipo J a massa JU = Insulated thermocouple J type / Termocoppie tipo J isolate	55	TS077	800	1	TS045	1400	1	E06145	E16058	1
E94102 *	110 < x ≤ 120		60	TS078	900		TS057	1600				
E94103 **	120 < x ≤ 130		65	TS079	900		TS058	1900				
E94108 **	130 < x ≤ 140		70	TS112	900		TS005	2300				
E94112 **	140 < x ≤ 150		75	TS080	1000		TS047	1500				
E94116 ***	150 < x ≤ 160		80	TS081	1000		TS059	2100				
E94117 ***	160 < x ≤ 170		85	TS082	1100		TS007	2400				
E94121 ***	170 < x ≤ 180		90	TS083	1100		TS060	2200				
E94298 ***	180 < x ≤ 190		95	TS084	1200		TS008	2400				
E94125	190 < x ≤ 200		100	TS085	1200		TS046	2200				
E94299	200 < x ≤ 210		105	TS086	1400		TS009	2400				
E94129	210 < x ≤ 220		110	TS087	1500		TS146	2000				
E94300	220 < x ≤ 230		115	TS113	1600		TS061	2400				
E94133	230 < x ≤ 240		120	TS089	1600		TS011	2700				
E94141	240 < x ≤ 250		125	TS090	1700		TS012	2500				
E94145	250 < x ≤ 260		130	TS091	1700		TS062	2500				
E94297	260 < x ≤ 270		135	TS092	1800		TS063	2700				
E94149	270 < x ≤ 280		140	TS093	1800		TS014	3300				
E94301	280 < x ≤ 290		145	TS094	1800		TS174	2200				
E94120	290 < x ≤ 300		150	TS095	1900		TS015	3100				
E94302	300 < x ≤ 310		155	TS096	2100		TS016	3200				
E94157	310 < x ≤ 320		160	TS097	2000		TS065	3100				
E94303	320 < x ≤ 330		165	TS098	2200		TS017	3100				
E94161	330 < x ≤ 340		170	TS099	2100		TS018	3300				
E94165	340 < x ≤ 350		175	TS114	2200		TS176	3000				
E94169	350 < x ≤ 360		180	TS101	2200		TS067	3200				
E94304	360 < x ≤ 370		185	TS102	2200		TS020	3200				
E94173	370 < x ≤ 380		190	TS103	2400		TS068	3300				
E94351	380 < x ≤ 390		195	TS021	3200		TS021	3200				
E94177	390 < x ≤ 400		200	TS115	2900		TS022	3200				
E94352	400 < x ≤ 410	205	TS106	3000	TS070	3200						
E94353	410 < x ≤ 420	210	TS023	3200	TS023	3200						
E94354	420 < x ≤ 430	215	TS107	3100	TS024	3300						
E94355	430 < x ≤ 440	220	TS116	2600	TS071	3300						
E94181	440 < x ≤ 450	225	TS109	2600	TS025	3300						
E94356	450 < x ≤ 460	230	TS118	3000	TS175	3400						
E94357	460 < x ≤ 470	235	TS027	3300	TS177	3500						
E94358	470 < x ≤ 480	240	TS119	3400	TS119	3400						
E94359	480 < x ≤ 490	245	TS028	3300	TS140	3500						
E94150	490 < x ≤ 500	250	TS029	3300	TS029	3300						

<sup>1</sup> Not valid code for order / Non valido come codice d'ordine

<sup>2</sup> Nominal power referred to each single heater / Potenza nominale riferita ad ogni singolo elemento riscaldante

<sup>3</sup> To be carried out at Thermoplay / Sostituzione da effettuare in Thermoplay

\* For this distance, the E19399, E18326 and E18327 shut off groups are not available. / Per questo interasse i gruppi otturazione E19399, E18326 e E18327 non sono disponibili.

\*\* For this distance, the E19399 and E18327 shut off groups are not available. / Per questo interasse i gruppi otturazione E19399 e E18327 non sono disponibili.

\*\*\* For this distance, the E18327 shut off group is not available. / Per questo interasse il gruppo otturazione E18327 non è disponibile.

WARNING: according to the process temperature of the injected polymer, will be advised the suitable kind of manifold ( with or without armored heaters).  
 ATTENZIONE: in funzione della temperatura di processo del polimero utilizzato, verrà consigliata la tipologia di piastra di distribuzione idonea (con o senza resistenze corazzate).

In the section 06  
 - Seat of shut off groups  
 - Pin tip machining  
 - Pin length calculation

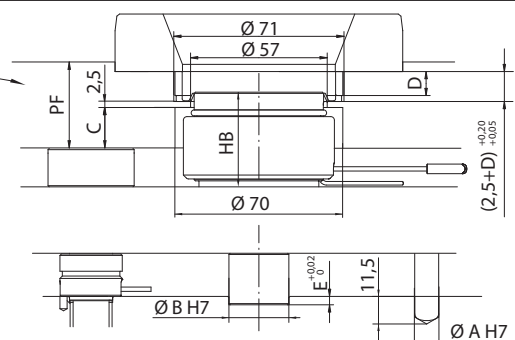
Nella sezione 06  
 - Alloggiamento gruppi otturazione  
 - Lavorazione punta spillo  
 - Calcolo lunghezza spillo

For dimension not specified  
 consult Thermoplay catalogue  
 in accessories section.

Per le quote non specificate  
 consultare la sezione 16 - Accessori

Heat - treatable steel plate 110 Kg/mm<sup>2</sup>  
 in alternative hardened steel HRC 42-46  
 Piastra in acciaio bonificato 110 kg/mm<sup>2</sup>  
 in alternativa acciaio temprato HRC 42-46

Shut off group Gr. ott.	HB	C	PF	
			D=0	D≠0
E18500	84	61	78.5	70 + D
E18323	60	37	46	46 + D
E18325	84	61	78.5	70 + D
E18327	84	57	66	66 + D
E18326	60	31.5	42	42 + D



Further information have to be requested to Thermoplay's Technical Support - Per ulteriori informazioni consultare il Servizio Tecnico Thermoplay