

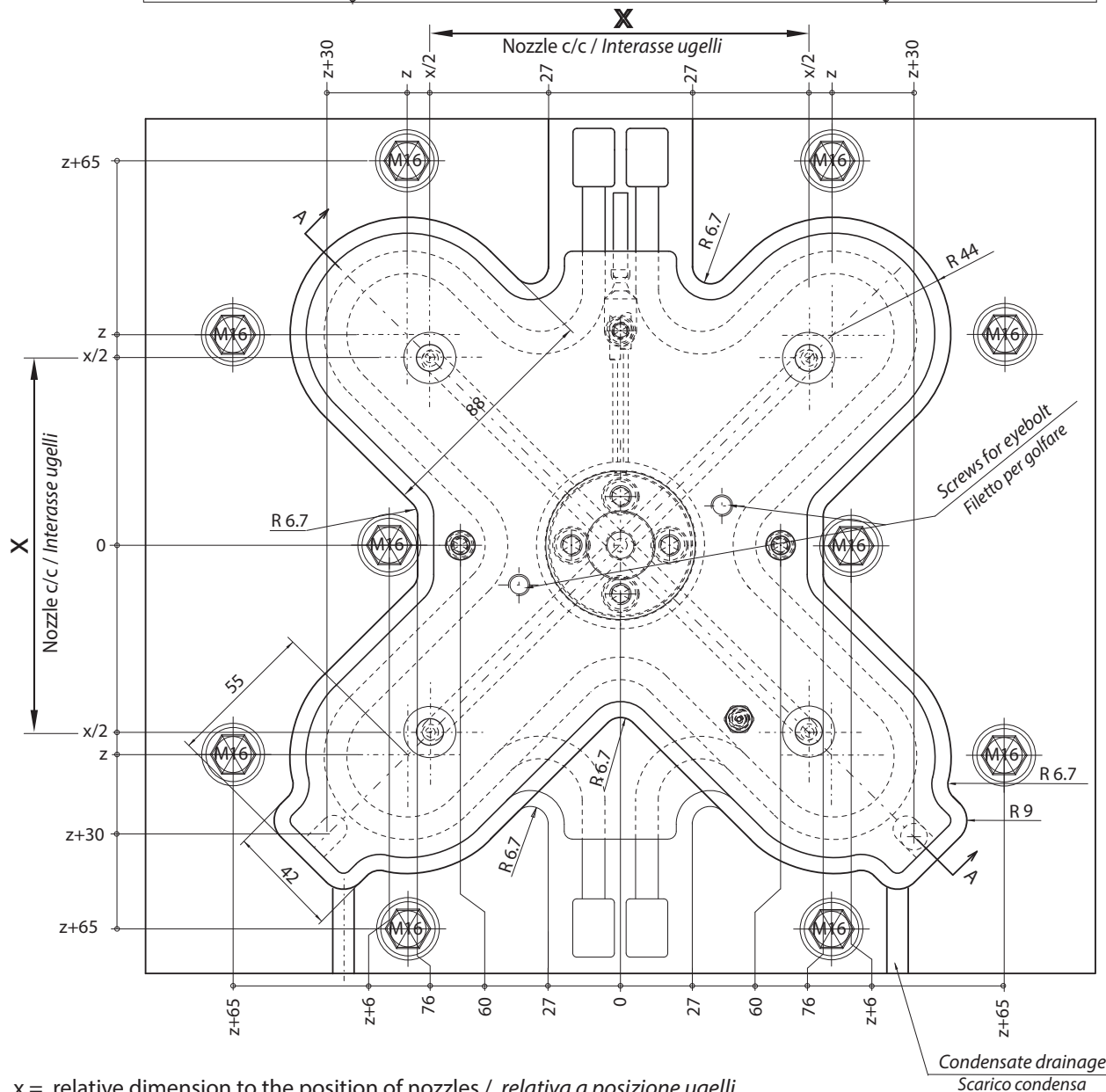
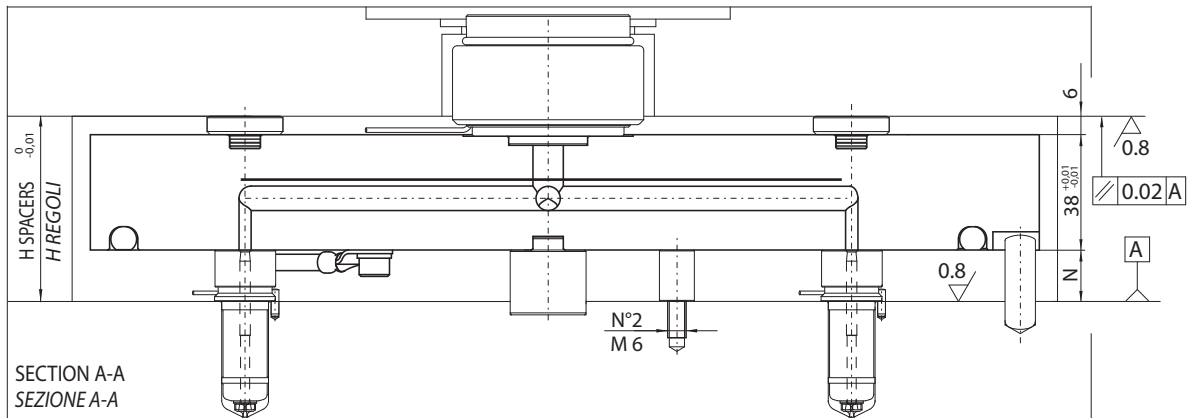


CONFIGURABLE SYSTEMS

Create the configuration on www.thermoplay.com

SISTEMI A CANALE CALDO CONFIGURABILI

Creare la configurazione su www.thermoplay.com



x = relative dimension to the position of nozzles / *relativa a posizione ugelli*
 z = relative dimension to the external shape of manifold / *relativa a contorno esterno distributore*

$$H \text{ Spacers / H regoli} = (N + 38 + 6) + [(N + 38 + 6) \cdot \Delta T \cdot k] - 0.05 = \text{mm}$$

N = nozzle head / *testa ugelli*

Δt = Temperature difference between the hot runner and the mould / *differenza di temperatura tra camera calda e stampo*

K = Steel thermal expansion coefficient / *coefficiente di dilatazione termica dell'acciaio* (= 0.000125)



CONFIGURABLE SYSTEMS / SISTEMI A CANALE CALDO CONFIGURABILI

Manifold / Piastra					Heaters not armored Resistenze non corazzate						Armored heaters ³ Resistenze corazzate ³						
1 Code 1 Codice piastra	Nozzle c/c Interasse	Thermocouple type Tipo termocoppia	Drawing / Disegno	z	Heater / Resistenza			Termocouple Termocoppia			Heater / Resistenza			Termocouple Termocoppia			
					Code Codice	Power ² Potenza [W]	Q.ty Q.tà	grounded a massa	insulated isolata	Q.ty / Q.tà	Code Codice	Power ² Potenza [W]	Q.ty Q.tà	grounded a massa	insulated isolata	Q.ty / Q.tà	
E90188	90 < x ≤ 100	JG= Grounded thermocouples J type / Termocoppie tipo J a massa JU = Insulated thermocouple J type / Termocoppie tipo J isolate	SPARE PARTS / RICAMBI	A	50	TS120	2200	1	E06143	E16055	1	TS090	1700	2	E06143 - E06145	E16055 - E16058	1+1
E90305	100 < x ≤ 110			A	55	TS121	2300					TS092	1800				
E90192	110 < x ≤ 120			A	60	TS122	2500					TS179	2000				
E90105	120 < x ≤ 130			A	65	TS123	2700					TS098	2200				
E90199	130 < x ≤ 140			A	70	TS124	2800					TS101	2200				
E90203	140 < x ≤ 150			A	75	TS125	3000					TS103	2400				
E90207	150 < x ≤ 160			A	80	TS023	3200					TS023	3200				
E90306	160 < x ≤ 170			B	85	TS126	1800					TS126	1800				
E90211	170 < x ≤ 180			B	90	TS046	2200					TS046	2200				
E90307	180 < x ≤ 190			B	95	TS127	1900					TS086	1400				
E90215	190 < x ≤ 200			B	100	TS128	2000	TS113	1600								
E90308	200 < x ≤ 210			B	105	TS129	2100	TS089	1600								
E90219	210 < x ≤ 220			B	110	TS012	2500	TS012	2500								
E90309	220 < x ≤ 230			B	115	TS121	2300	TS092	1800								
E90223	230 < x ≤ 240			B	120	TS130	2300	TS093	1800								
E90227	240 < x ≤ 250			B	125	TS122	2400	TS179	2000								
E90231	250 < x ≤ 260			B	130	TS132	2500	TS096	2100								
E90310	260 < x ≤ 270			B	135	TS133	2600	TS181	2200								
E90235	270 < x ≤ 280			B	140	TS134	2600	TS099	2100								
E90360	280 < x ≤ 290			B	145	TS135	2600	TS100	2300								
E90239	290 < x ≤ 300			B	150	TS136	2600	TS102	2200								
E90361	300 < x ≤ 310			B	155	TS021	3200	TS103	2400								
E90243	310 < x ≤ 320			B	160	TS115	2900	TS115	2900								
E90362	320 < x ≤ 330			B	165	TS106	3000	TS106	3000								
E90247	330 < x ≤ 340			B	170	TS107	3100	TS107	3100								
E90251	340 < x ≤ 350	B	175	TS137	3000	TS071	3300										
E90255	350 < x ≤ 360	B	180	TS138	3000	TS026	3400										
E90363	360 < x ≤ 370	B	185	TS139	3000	TS175	3400										
E90259	370 < x ≤ 380	B	190	TS119	3400	TS119	3400										
E90364	380 < x ≤ 390	B	195	TS140	3500	TS140	3500										
E90134	390 < x ≤ 400	B	200	TS072	3300	TS072	3300										
E90365	400 < x ≤ 410	B	205	TS141	3500	TS141	3500										
E90366	410 < x ≤ 420	B	210	TS142	3500	TS178	2400										
E90367	420 < x ≤ 430	B	215	TS143	3500	TS049	2600										
E90368	430 < x ≤ 440	B	220	TS144	3500	TS073	3200										
E90266	440 < x ≤ 450	B	225	TS145	3500	TS074	3200										

¹ Not valid code for order / Non valido come codice d'ordine

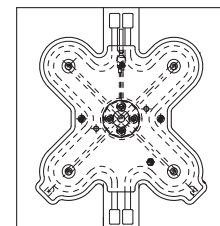
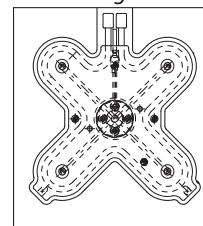
² Nominal power referred to each single heater / Potenza nominale riferita ad ogni singolo elemento riscaldante

³ To be carried out at Thermoplay / Sostituzione da effettuare in Thermoplay

WARNING: according to the process temperature of the injected polymer, will be advised the suitable kind of manifold (with or without armored heaters).
ATTENZIONE: in funzione della temperatura di processo del polimero utilizzato, verrà consigliata la tipologia di piastra di distribuzione idonea (con o senza resistenze corazzate).

Drawing A
Disegno A

Drawing B
Disegno B



Heat - treatable steel plate
110 Kg/mm² in alternative
hardened steel HRC 42-46
Piastra in acciaio bonificato
110 kg/mm² in alternativa
acciaio temprato HRC 42-46

HB	C	PF
22	11	18 + D
40	27	36 + D
46	27	36 + D
60	47	56 + D
84	71	80 + D

For dimension not specified consult Thermoplay catalogue in accessories section.
Per le quote non specificate consultare la sezione 16 -Accessori

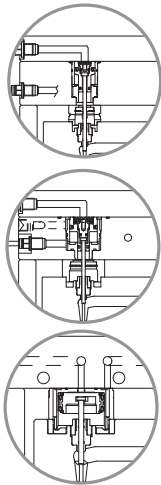
Further information have to be requested to Thermoplay's Technical Support - Per ulteriori informazioni consultare il Servizio Tecnico Thermoplay



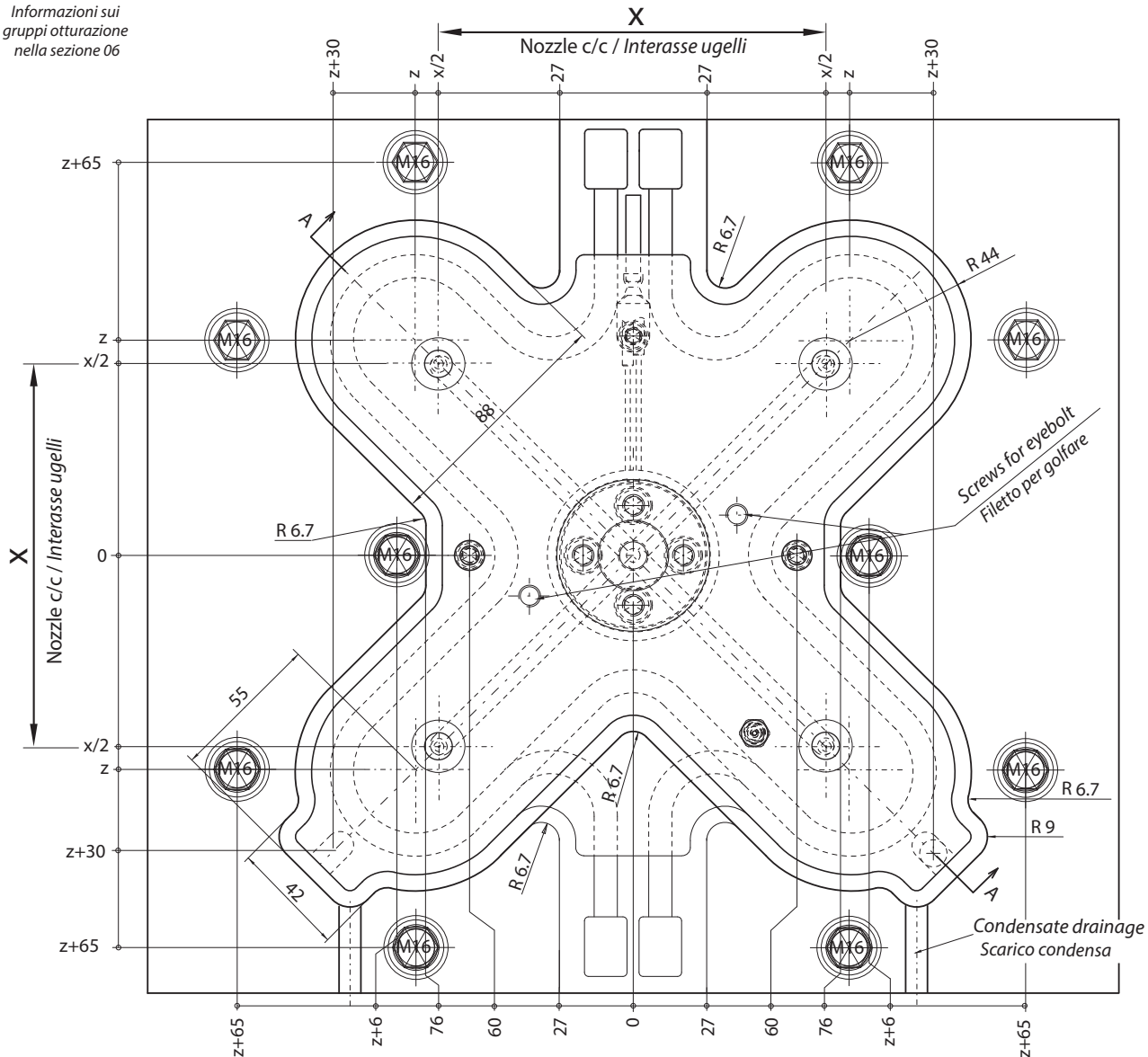
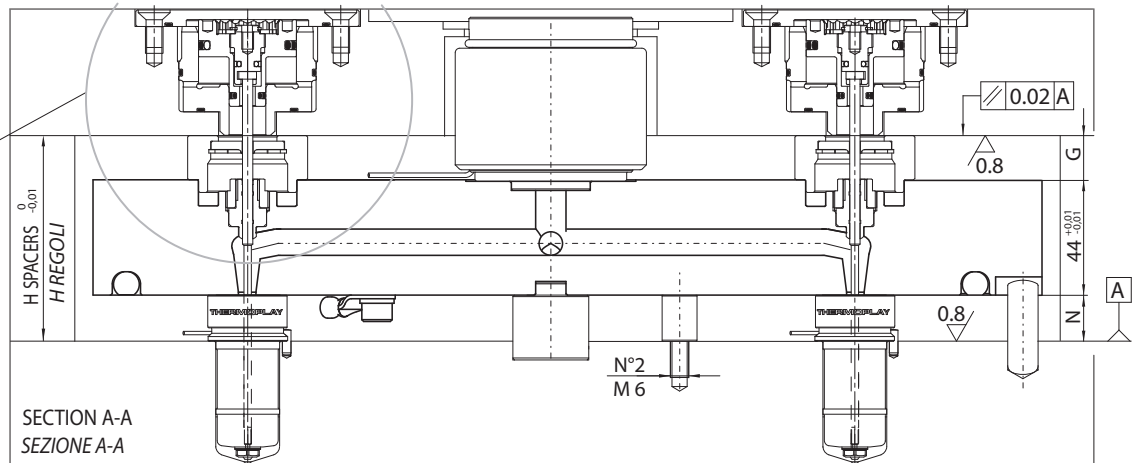
CONFIGURABLE SYSTEMS Create the configuration on www.thermoplay.com

SISTEMI A CANALE CALDO CONFIGURABILI Creare la configurazione su www.thermoplay.com

Compatible with shut off groups E18500, E19399, E18326, E18327 and nozzles types FN3 - FN3D - FN3B - DN3
 Compatibile con gruppi otturazione E18500, E19399, E18326, E18327 ed ugelli FN3 - FN3D - FN3B - DN3



Information about shut off groups in section 06.
 Informazioni sui gruppi otturazione nella sezione 06



x = relative dimension to the position of nozzles / relativa a posizione ugelli
 z = relative dimension to the external shape of manifold / relativa a contorno esterno distributore

H Spacers / H regoli = (N + 44 + G) + [(N + 44 + 6) · ΔT · k] - 0.05 = mm

N = nozzle head / testa ugelli

Δt = Temperature difference between the hot runner and the mould / differenza di temperatura tra camera calda e stampo

K = Steel thermal expansion coefficient / coefficiente di dilatazione termica dell'acciaio (= 0.000125)

Shut off groupe Gr. ott	G
E18500 E18323 E18325	16
E18327	20
E18326	21.5



CONFIGURABLE SYSTEMS / SISTEMI A CANALE CALDO CONFIGURABILI

Compatible with shut off groups E18500, E19399, E18326, E18327 and nozzles types FN3 - FN3D - FN3B - DN3
 Compatibile con gruppi otturazione E18500, E19399, E18326, E18327 ed ugelli FN3 - FN3D - FN3B - DN3

Manifold / Piastra					Heaters not armored Resistenze non corazzate						Armored heaters ³ Resistenze corazzate ³						
1 Code 1 Codice piastra	Nozzle c/c Interasse	Thermocouple type Tipo termocoppia	Drawing / Disegno	z	Heater / Resistenza			Termocouple Termocoppia			Heater / Resistenza			Termocouple Termocoppia			
					Code Codice	Power ² Potenza ² [W]	Q.ty Q.tà	grounded a massa	insulated isolata	Q.ty / Q.tà	Code Codice	Power ² Potenza ² [W]	Q.ty Q.tà	grounded a massa	insulated isolata	Q.ty / Q.tà	
E94188*	90 < x ≤ 100	JG= Grounded thermocouples J type / Termocoppie tipo J a massa JU= Insulated thermocouple J type / Termocoppie tipo J isolate	SPARE PARTS / RICAMBI	A	50	TS120	2200	1	E06143	E16055	1	TS120	2200	E06143	E16055	2	2
E94305*	100 < x ≤ 110			A	55	TS121	2300					TS121	2300				
E94192**	110 < x ≤ 120			A	60	TS122	2500					TS122	2500				
E94105**	120 < x ≤ 130			A	65	TS123	2700					TS123	2700				
E94199	130 < x ≤ 140			A	70	TS124	2800					TS124	2800				
E94203	140 < x ≤ 150			A	75	TS125	3000					TS125	3000				
E94207	150 < x ≤ 160			A	80	TS023	3200					TS023	3200				
E94306	160 < x ≤ 170			B	85	TS126	1800					TS126	1800				
E94211	170 < x ≤ 180			B	90	TS046	2200					TS046	2200				
E94307	180 < x ≤ 190			B	95	TS127	1900					TS127	1900				
E94215	190 < x ≤ 200			B	100	TS128	2000					TS128	2000				
E94308	200 < x ≤ 210			B	105	TS129	2100					TS129	2100				
E94219	210 < x ≤ 220			B	110	TS012	2500					TS012	2500				
E94309	220 < x ≤ 230			B	115	TS121	2300					TS121	2300				
E94223	230 < x ≤ 240			B	120	TS130	2300	TS130	2300								
E94227	240 < x ≤ 250			B	125	TS122	2400	TS122	2400								
E94231	250 < x ≤ 260			B	130	TS132	2500	TS132	2500								
E94310	260 < x ≤ 270			B	135	TS133	2600	TS133	2600								
E94235	270 < x ≤ 280			B	140	TS134	2600	TS134	2600								
E94360	280 < x ≤ 290			B	145	TS135	2600	TS135	2600								
E94239	290 < x ≤ 300			B	150	TS136	2600	TS136	2600								
E94361	300 < x ≤ 310			B	155	TS021	3200	TS021	3200								
E94243	310 < x ≤ 320			B	160	TS115	2900	TS115	2900								
E94362	320 < x ≤ 330			B	165	TS106	3000	TS106	3000								
E94247	330 < x ≤ 340			B	170	TS107	3100	TS107	3100								
E94251	340 < x ≤ 350			B	175	TS137	3000	TS137	3000								
E94255	350 < x ≤ 360			B	180	TS138	3000	TS138	3000								
E94363	360 < x ≤ 370			B	185	TS139	3000	TS139	3000								
E94259	370 < x ≤ 380			B	190	TS119	3400	TS119	3400								
E94364	380 < x ≤ 390			B	195	TS140	3500	TS140	3500								
E94134	390 < x ≤ 400			B	200	TS072	3300	TS072	3300								
E94365	400 < x ≤ 410			B	205	TS141	3500	TS141	3500								
E94366	410 < x ≤ 420			B	210	TS142	3500	TS142	3500								
E94367	420 < x ≤ 430			B	215	TS143	3500	TS143	3500								
E94368	430 < x ≤ 440			B	220	TS144	3500	TS144	3500								
E94266	440 < x ≤ 450			B	225	TS145	3500	TS145	3500								

¹ Not valid code for order / Non valido come codice d'ordine

² Nominal power referred to each single heater / Potenza nominale riferita ad ogni singolo elemento riscaldante

³ To be carried out at Thermoplay / Sostituzione da effettuare in Thermoplay

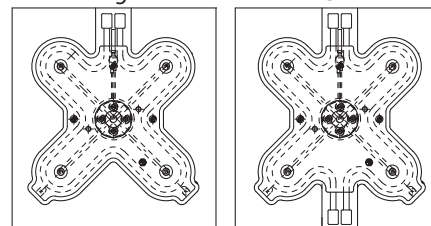
* For this distance, the E19399 and E18327 shut off groups are not available.
 Per questo interasse i gruppi otturazione E19399 e E18327 non sono disponibili.

** For this distance, the E18327 shut off group is not available.
 Per questo interasse il gruppo otturazione E18327 non è disponibile.

WARNING: according to the process temperature of the injected polymer, will be advised the suitable kind of manifold (with or without armored heaters).
 ATTENZIONE: in funzione della temperatura di processo del polimero utilizzato, verrà consigliata la tipologia di piastra di distribuzione idonea (con o senza resistenze corazzate).

Drawing A
Disegno A

Drawing B
Disegno B



In the section 06
 - Seat of shut off groups
 - Pin tip machining
 - Pin length calculation

Nella sezione 06
 - Alloggiamento gruppi otturazione
 - Lavorazione punta spillo
 - Calcolo lunghezza spillo

For dimension not specified consult Thermoplay catalogue in accessories section.

Per le quote non specificate consultare la sezione 16 - Accessori

Heat - treatable steel plate 110 Kg/mm²
 in alternative hardened steel HRC 42-46
 Piastra in acciaio bonificato 110 kg/mm²
 in alternativa acciaio temprato HRC 42-46

Shut off grupe Gr. ott	HB	C	PF	
			D=0	D≠0
E18500	84	61	78.5	70 + D
E18323	60	37	46	46 + D
E18325	84	61	78.5	70 + D
E18327	84	57	66	66 + D
E18326	60	31.5	42	42 + D

