

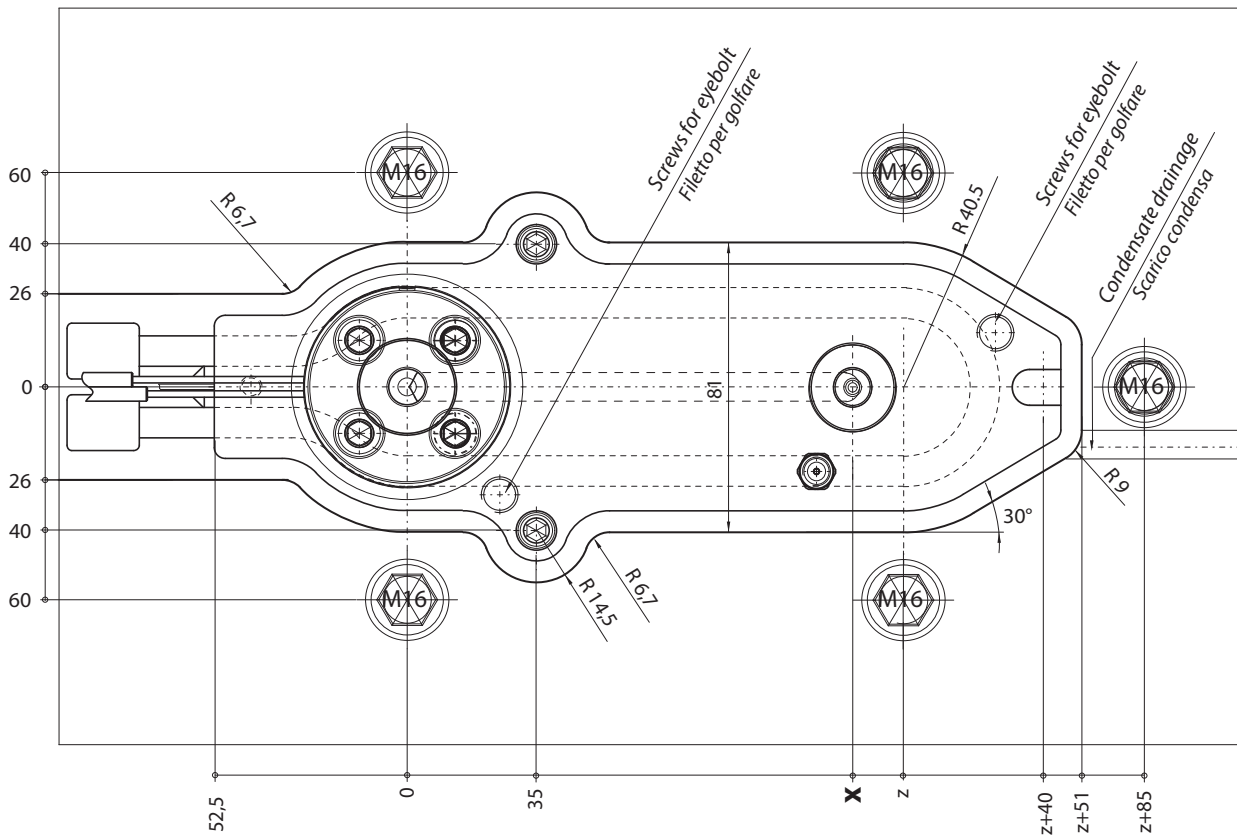
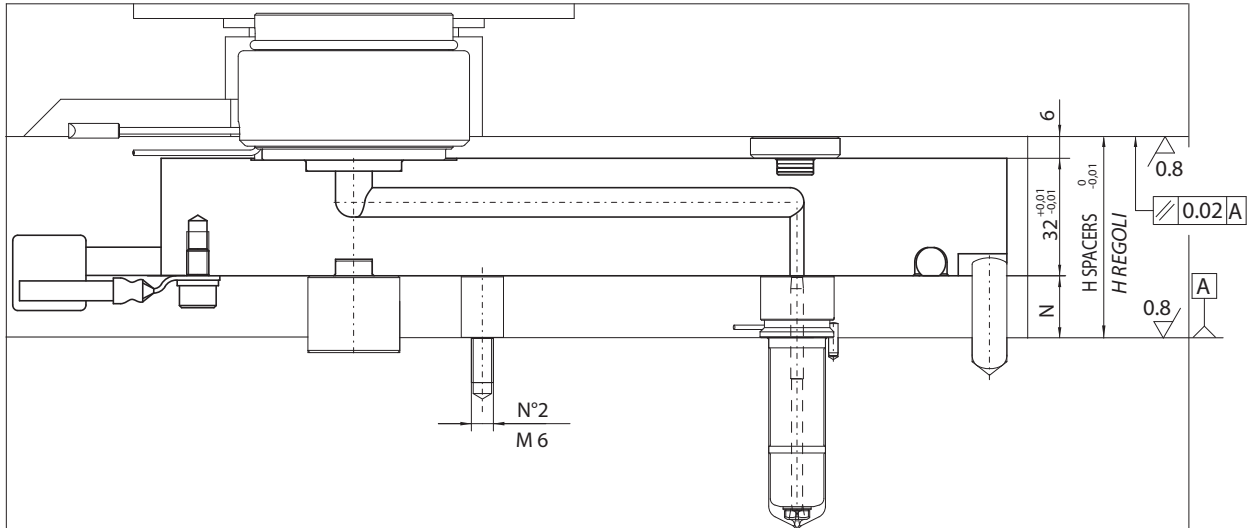


**CONFIGURABLE SYSTEMS**

Create the configuration on [www.thermoplay.com](http://www.thermoplay.com)

**SISTEMI A CANALE CALDO CONFIGURABILI**

Creare la configurazione su [www.thermoplay.com](http://www.thermoplay.com)



x = relative dimension to the position of nozzles / *relativa a posizione ugelli*

z = relative dimension to the external shape of manifold / *relativa a contorno esterno distributore*

$$H \text{ Spacers} / H \text{ regoli} = (N + 32 + 6) + [(N + 32 + 6) \cdot \Delta T \cdot k] - 0.05 = \text{mm}$$

N = nozzle head / *testa ugelli*

$\Delta t$  = Temperature difference between the hot runner and the mould / *differenza di temperatura tra camera calda e stampo*

K = Steel thermal expansion coefficient / *coefficiente di dilatazione termica dell'acciaio* (= 0.000125)



CONFIGURABLE SYSTEMS  
SISTEMI A CANALE CALDO CONFIGURABILI

Manifold / Piastra			Heater / Resistenza						Thermocouple / Termocoppia		
Code Codice piastra	Nozzle c/c Interasse	Thermocouple type Tipo termocoppia	Heaters not armored Resistenze non corazzate			Armored heaters <sup>3</sup> Resistenze corazzate <sup>3</sup>			grounded a massa	insulated isolata	Qty / Q.tà
			Code Codice	Power <sup>2</sup> Potenza [W]	Qty Q.tà	Code Codice	Power <sup>2</sup> Potenza [W]	Qty Q.tà			
E90311	50 < x ≤ 60	JG= Grounded thermocouples J type / Termocoppie tipo J a massa JU = Insulated thermocouple J type / Termocoppie tipo J isolate	TS056	1300	1	TS056	1300	1	E06145	E16058	1
E90312	60 < x ≤ 70		TS001	1200		TS001	1200				
E90313	70 < x ≤ 80		TS002	1200		TS002	1200				
E90314	80 < x ≤ 90		TS076	800		TS052	1300				
E90315	90 < x ≤ 100		TS077	800		TS045	1400				
E90316	100 < x ≤ 110		TS078	900		TS004	1800				
E90317	110 < x ≤ 120		TS079	900		TS058	1900				
E90318	120 < x ≤ 130		TS003	1300		TS003	1300				
E90319	130 < x ≤ 140		TS080	1000		TS047	1500				
E90320	140 < x ≤ 150		TS081	1000		TS059	2100				
E90321	150 < x ≤ 160		TS082	1100		TS007	2400				
E90322	160 < x ≤ 170		TS083	1100		TS060	2200				
E90323	170 < x ≤ 180		TS084	1200		TS008	2400				
E90324	180 < x ≤ 190		TS085	1200		TS046	2200				
E90325	190 < x ≤ 200		TS086	1400		TS146	2000				
E90326	200 < x ≤ 210		TS087	1500		TS146	2000				
E90327	210 < x ≤ 220		TS088	1600		TS011	2700				
E90328	220 < x ≤ 230		TS089	1600		TS050	2500				
E90329	230 < x ≤ 240		TS090	1700		TS012	2500				
E90330	240 < x ≤ 250		TS091	1700		TS062	2500				
E90331	250 < x ≤ 260		TS092	1800		TS063	2700				
E90332	260 < x ≤ 270		TS093	1800		TS014	3300				
E90333	270 < x ≤ 280		TS094	1800		TS174	2400				
E90334	280 < x ≤ 290		TS095	1900		TS016	3200				
E90335	290 < x ≤ 300		TS096	2100		TS065	3100				
E90336	300 < x ≤ 310		TS097	2000		TS017	3100				
E90337	310 < x ≤ 320		TS098	2200		TS018	3300				
E90338	320 < x ≤ 330		TS099	2100		TS066	3200				
E90339	330 < x ≤ 340		TS100	2300		TS019	3200				
E90340	340 < x ≤ 350		TS101	2200		TS067	3200				
E90341	350 < x ≤ 360	TS102	2200	TS020	3200						
E90342	360 < x ≤ 370	TS103	2400	TS021	3200						
E90343	370 < x ≤ 380	TS104	2500	TS069	3300						
E90344	380 < x ≤ 390	TS105	2700	TS115	2900						
E90345	390 < x ≤ 400	TS106	3000	TS023	3200						
E90346	400 < x ≤ 410	TS107	3100	TS024	3300						
E90347	410 < x ≤ 420	TS108	3200	TS108	3200						
E90348	420 < x ≤ 430	TS109	2600	TS025	3300						
E90349	430 < x ≤ 440	TS110	2600	TS026	3400						
E90350	440 < x ≤ 450	TS111	2600	TS175	3400						

<sup>1</sup> Not valid code for order / Non valido come codice d'ordine

<sup>2</sup> Nominal power referred to each single heater / Potenza nominale riferita ad ogni singolo elemento riscaldante

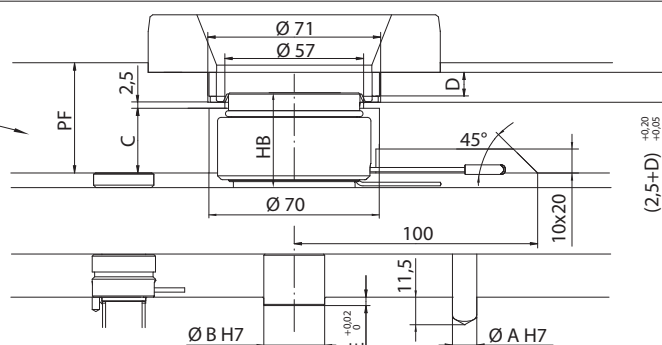
<sup>3</sup> To be carried out at Thermoplay / Sostituzione da effettuare in Thermoplay

WARNING: according to the process temperature of the injected polymer, will be advised the suitable kind of manifold ( with or without armored heaters).  
ATTENZIONE: in funzione della temperatura di processo del polimero utilizzato, verrà consigliata la tipologia di piastra di distribuzione idonea (con o senza resistenze corazzate).

Heat - treatable steel plate 110 Kg/mm<sup>2</sup>  
in alternative hardened steel HRc 42-46  
Piastra in acciaio bonificato 110 kg/mm<sup>2</sup>  
in alternativa acciaio temprato HRc 42-46

For dimension not specified  
consult Thermoplay catalogue  
in accessories section.  
Per le quote non specificate  
consultare la sezione 16 -Accessori

HB	C	PF
22	11	18 + D
40	27	36 + D
46	27	36 + D
60	47	56 + D
84	71	80 + D



Further information have to be requested to Thermoplay's Technical Support - Per ulteriori informazioni consultare il Servizio Tecnico Thermoplay



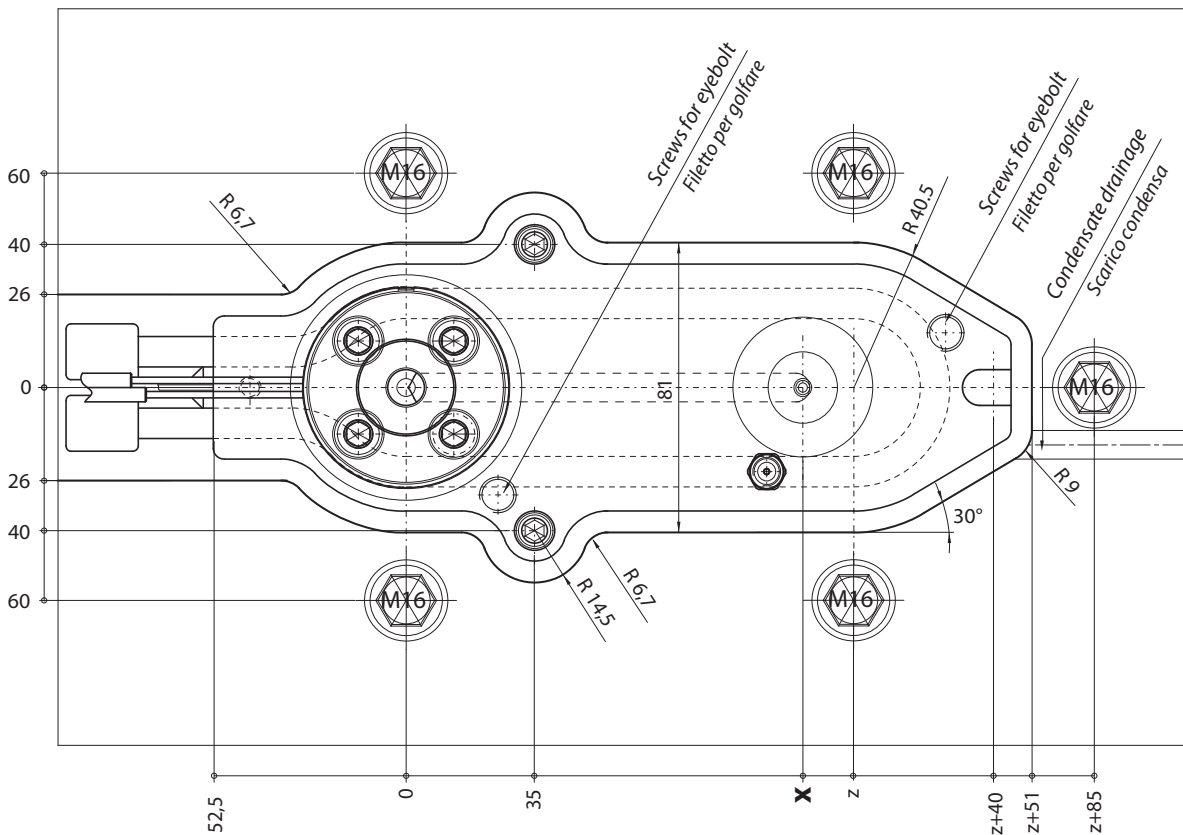
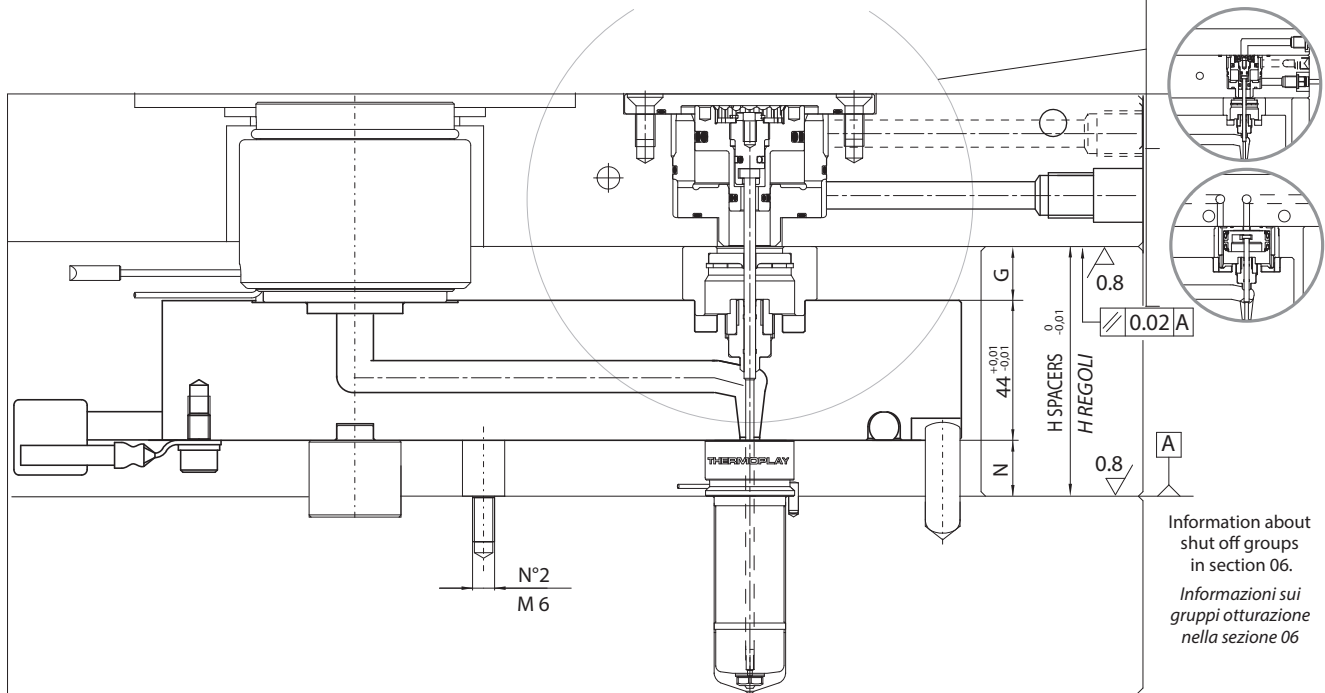
### CONFIGURABLE SYSTEMS

Create the configuration on [www.thermoplay.com](http://www.thermoplay.com)

### SISTEMI A CANALE CALDO CONFIGURABILI

Creare la configurazione su [www.thermoplay.com](http://www.thermoplay.com)

Compatible with shut off groups E18500, E19399, E18326, E18327 and nozzles types FN3 - FN3D - FN3B - DN3  
 Compatibile con gruppi otturazione E18500, E19399, E18326, E18327 ed ugelli FN3 - FN3D - FN3B - DN3



x = relative dimension to the position of nozzles / *relativa a posizione ugelli*  
 z = relative dimension to the external shape of manifold / *relativa a contorno esterno distributore*

**H Spacers / H regoli = (N + 44 + G) + [(N + 44 + 6) · ΔT · k] - 0.05 = mm**

N = nozzle head / *testa ugelli*

Δt = Temperature difference between the hot runner and the mould / *differenza di temperatura tra camera calda e stampo*

K = Steel thermal expansion coefficient / *coefficiente di dilatazione termica dell'acciaio* (= 0.000125)

Shut off groupe Gr. ott	G
E18500	16
E18323	
E18325	20
E18327	
E18326	21.5



## CONFIGURABLE SYSTEMS SISTEMI A CANALE CALDO CONFIGURABILI

Compatible with shut off groups E18500, E19399, E18326, E18327 and nozzles types FN3 - FN3D - FN3B - DN3

*Compatibile con gruppi otturazione E18500, E19399, E18326, E18327 ed ugelli FN3 - FN3D - FN3B - DN3*

Manifold / Piastra			Heater / Resistenza						Termocouple / Termocoppia		
1 Code 1 Codice piastra	Nozzle c/c Interasse	Thermocouple type Tipo termocoppia	Heaters not armored Resistenze non corazzate			Armored heaters <sup>3</sup> Resistenze corazzate <sup>3</sup>			grounded a massa	insulated isolata	Q.ty / Q.tà
			Code Codice	Power <sup>2</sup> Potenza [W]	Q.ty Q.tà	Code Codice	Power <sup>2</sup> Potenza [W]	Q.ty Q.tà			
E94311*	60	JG= Grounded thermocouples J type / Termocoppie tipo J a massa JU = Insulated thermocouple J type / Termocoppie tipo J isolate  <b>SPARE PARTS / RICAMBI</b>	TS056	1300	1	TS056	1300	1	E06145	E16058	1
E94312*	60 < x ≤ 70		TS001	1200		TS001	1200				
E94313**	70 < x ≤ 80		TS002	1200		TS002	1200				
E94314**	80 < x ≤ 90		TS076	800		TS052	1300				
E94315**	90 < x ≤ 100		TS077	800		TS045	1400				
E94316	100 < x ≤ 110		TS078	900		TS004	1800				
E94317	110 < x ≤ 120		TS079	900		TS058	1900				
E94318	120 < x ≤ 130		TS003	1300		TS003	1300				
E94319	130 < x ≤ 140		TS080	1000		TS047	1500				
E94320	140 < x ≤ 150		TS081	1000		TS059	2100				
E94321	150 < x ≤ 160		TS082	1100		TS007	2400				
E94322	160 < x ≤ 170		TS083	1100		TS060	2200				
E94323	170 < x ≤ 180		TS084	1200		TS008	2400				
E94324	180 < x ≤ 190		TS085	1200		TS046	2200				
E94325	190 < x ≤ 200		TS086	1400		TS146	2000				
E94326	200 < x ≤ 210		TS087	1500		TS146	2000				
E94327	210 < x ≤ 220		TS088	1600		TS011	2700				
E94328	220 < x ≤ 230		TS089	1600		TS050	2500				
E94329	230 < x ≤ 240		TS090	1700		TS012	2500				
E94330	240 < x ≤ 250		TS091	1700		TS062	2500				
E94331	250 < x ≤ 260		TS092	1800		TS063	2700				
E94332	260 < x ≤ 270		TS093	1800		TS014	3300				
E94333	270 < x ≤ 280		TS094	1800		TS174	2400				
E94334	280 < x ≤ 290		TS095	1900		TS016	3200				
E94335	290 < x ≤ 300		TS096	2100		TS065	3100				
E94336	300 < x ≤ 310		TS097	2000		TS017	3100				
E94337	310 < x ≤ 320		TS098	2200		TS018	3300				
E94338	320 < x ≤ 330		TS099	2100		TS066	3200				
E94339	330 < x ≤ 340		TS100	2300		TS019	3200				
E94340	340 < x ≤ 350		TS101	2200		TS067	3200				
E94341	350 < x ≤ 360		TS102	2200		TS020	3200				
E94342	360 < x ≤ 370		TS103	2400		TS021	3200				
E94343	370 < x ≤ 380		TS104	2500		TS069	3300				
E94344	380 < x ≤ 390		TS105	2700		TS115	2900				
E94345	390 < x ≤ 400		TS106	3000		TS023	3200				
E94346	400 < x ≤ 410	TS107	3100	TS024	3300						
E94347	410 < x ≤ 420	TS108	3200	TS108	3200						
E94348	420 < x ≤ 430	TS109	2600	TS025	3300						
E94349	430 < x ≤ 440	TS110	2600	TS026	3400						
E94350	440 < x ≤ 450	TS111	2600	TS175	3400						

<sup>1</sup> Not valid code for order / Non valido come codice d'ordine

<sup>2</sup> Nominal power referred to each single heater / Potenza nominale riferita ad ogni singolo elemento riscaldante

<sup>3</sup> To be carried out at Thermoplay / Sostituzione da effettuare in Thermoplay

\* For this distance, the E19399 and E18327 shut off groups are not available. / Per questo interasse i gruppi otturazione E19399 e E18327 non sono disponibili.

\*\* For this distance, the E18327 shut off group is not available. / Per questo interasse il gruppo otturazione E18327 non è disponibile.

WARNING: according to the process temperature of the injected polymer, will be advised the suitable kind of manifold ( with or without armored heaters).

ATTENZIONE: in funzione della temperatura di processo del polimero utilizzato, verrà consigliata la tipologia di piastra di distribuzione idonea (con o senza resistenze corazzate).

In the section 06  
- Seat of shut off groups  
- Pin tip machining  
- Pin length calculation

Nella sezione 06  
- Alloggiamento gruppi otturazione  
- Lavorazione punta spillo  
- Calcolo lunghezza spillo

For dimension not specified  
consult Thermoplay catalogue  
in accessories section.

Per le quote non specificate  
consultare la sezione 16 - Accessori

Heat - treatable steel plate 110 Kg/mm<sup>2</sup>  
in alternative hardened steel HRC 42-46

Piastra in acciaio bonificato 110 kg/mm<sup>2</sup>  
in alternativa acciaio temprato HRC 42-46

Shut off groups Gr. ott	HB	C	PF	
			D=0	D≠0
E18500	84	61	78.5	70 + D
E18323	60	37	46	46 + D
E18325	84	61	78.5	70 + D
E18327	84	57	66	66 + D
E18326	60	31.5	42	42 + D

