

WORKSHEET FOR HOT HALF ENQUIRY

° PILLARS, SCREWS AND CENTERING RING:

CENTERING PILLARS (C1): \varnothing Q.ty (small diameter).

CENTERING PILLARS (C2): \varnothing Q.ty (big diameter).

FIXING SCREWS (B): M Q.ty

CENTERING RING (D): \varnothing

° ELECTRICAL SOCKETS AND LAYOUT:

SOCKET TYPE:

PLEASE SUPPLY NUMBERING NOZZLES

PLEASE SUPPLY TEMPERATURE CONTROLLER

ELECTRICAL LAYOUT

° PLEASE STATE LOCATION OF:

ELECTRICAL CONNECTORS (1- 12)

COOLING FITTINGS

° NOZZLE PROTUSION FROM NOZZLE-HOLDER

PLATE (A)

° HOT HALF MAXIMUM THICKNESS (HT)

° CLAMPING: ☐ EMBEDDED PASSING THROUGH (G1)

☐ EMBEDDED BLIND (G2)

☐ OUT OF EDGE (G3)

IF CLAMPING IS OUT OF EDGE, PLEASE SPECIFY (F) DIMENSION

° FOR COOLING FITTINGS, PLEASE SPECIFY:

THREADS: ☐ not embedded (E2)

☐ embedded (E1)

if embedded please specify \varnothing Y:

and the depth

THREADS: / GAS

☐ threads M

° INSULATING PLATE:

☐ YES

☐ NO

° INOX:

☐ YES

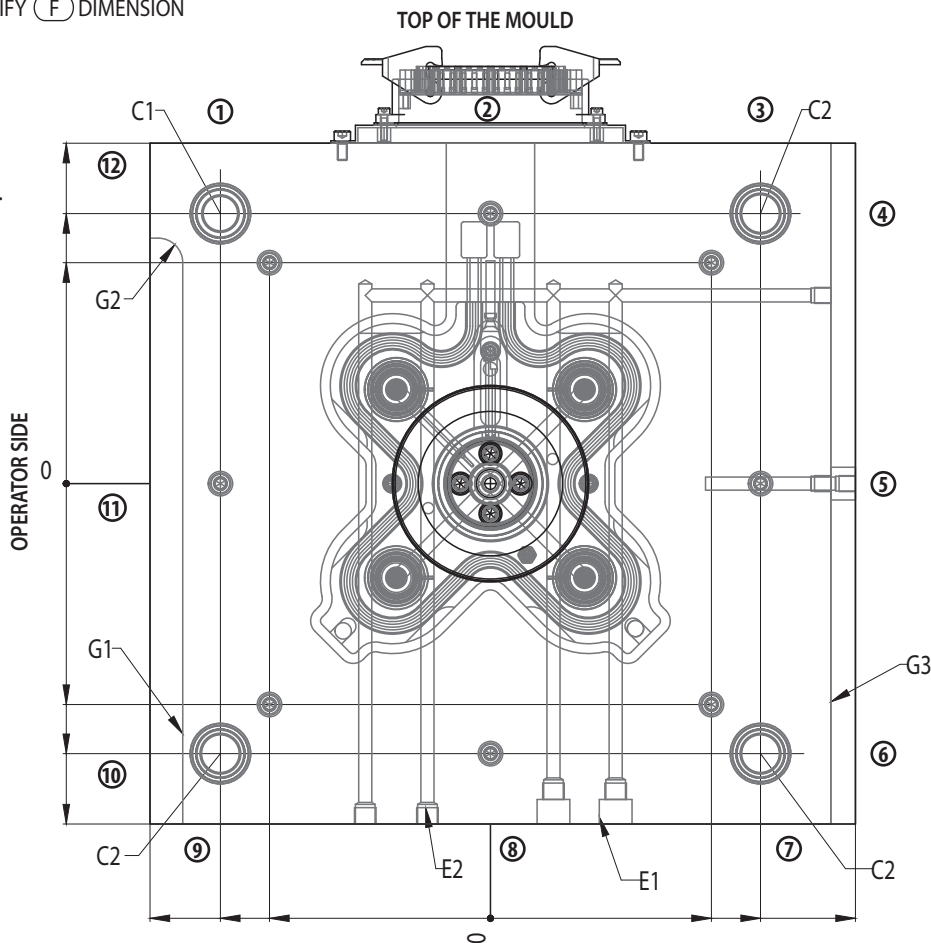
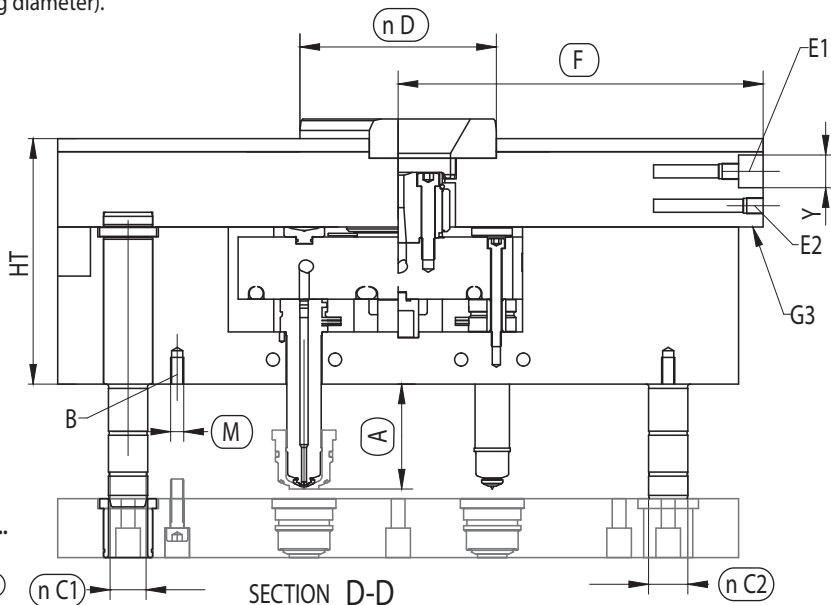
☐ NO

° HEATER CABLES EXIT IN THE MIDDLE:

(ONLY NOZZLES F \varnothing 16-24)

☐ YES

☐ NO



NOTE: The represented drawing is "view from injection bushing/nozzle press".

Customer technical specs.

NOTE

WORKSHEET FOR HOT HALF ENQUIRY

° PILLARS, SCREWS AND CENTERING RING:

CENTERING PILLARS (C1): \varnothing Q.ty (small diameter).

CENTERING PILLARS (C2): \varnothing Q.ty (big diameter).

FIXING SCREWS (B): M Q.ty

CENTERING RING (D): \varnothing

° ELECTRICAL SOCKETS AND LAYOUT:

SOCKET TYPE:

PLEASE SUPPLY NUMBERING NOZZLES

PLEASE SUPPLY TEMPERATURE CONTROLLER
ELECTRICAL LAYOUT

° PLEASE STATE LOCATION OF:

ELECTRICAL CONNECTORS (1- 12)

COOLING FITTINGS

SHUT OFF VALVES CONTROL CONNECTIONS

° NOZZLE PROTUSION FROM NOZZLE-HOLDER

PLATE (A)

° HOT HALF MAXIMUM THICKNESS (HT)

° CLAMPING: ☐ EMBEDDED PASSING THROUGH (G1)

☐ EMBEDDED BLIND (G2)

☐ OUT OF EDGE (G3)

IF CLAMPING IS OUT OF EDGE, PLEASE SPECIFY (F) DIMENSION

° FOR COOLING FITTINGS, PLEASE SPECIFY:

THREADS: ☐ not embedded (E2)

☐ embedded (E1)

if embedded please specify \varnothing Y:
and the depth

THREADS: / GAS

☐ threads M

° FOR SHUT OFF VALVES CONTROL CONNECTIONS PLEASE SPECIFY:

OPERATION: ☐ air ☐ oil

THREADS: ☐ not embedded (E2)

☐ embedded (E1)

if embedded please specify \varnothing Y:
and the depth

THREADS TYPE: ☐ / GAS

☐ threads M

° INSULATING PLATE:

☐ YES

☐ NO

° INOX:

☐ YES

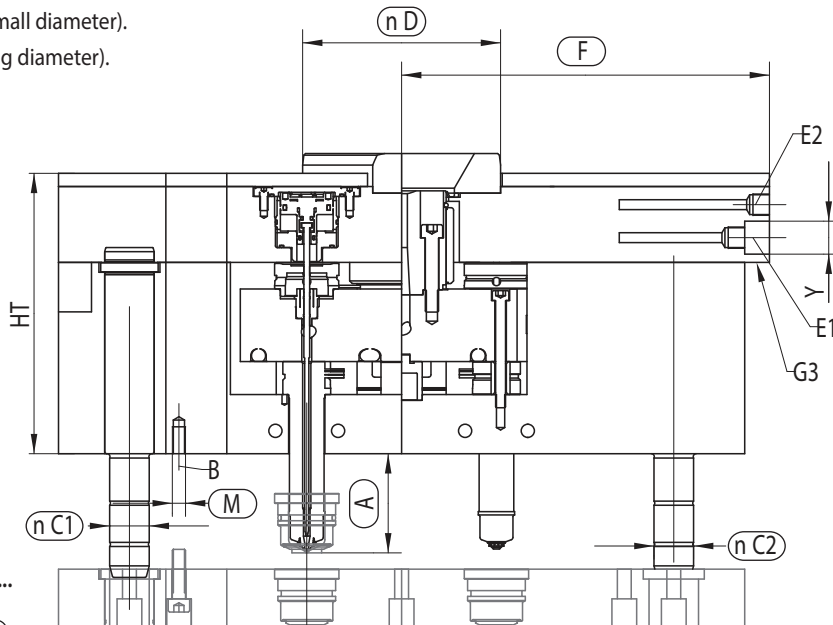
☐ NO

° HEATER CABLES EXIT IN THE MIDDLE:

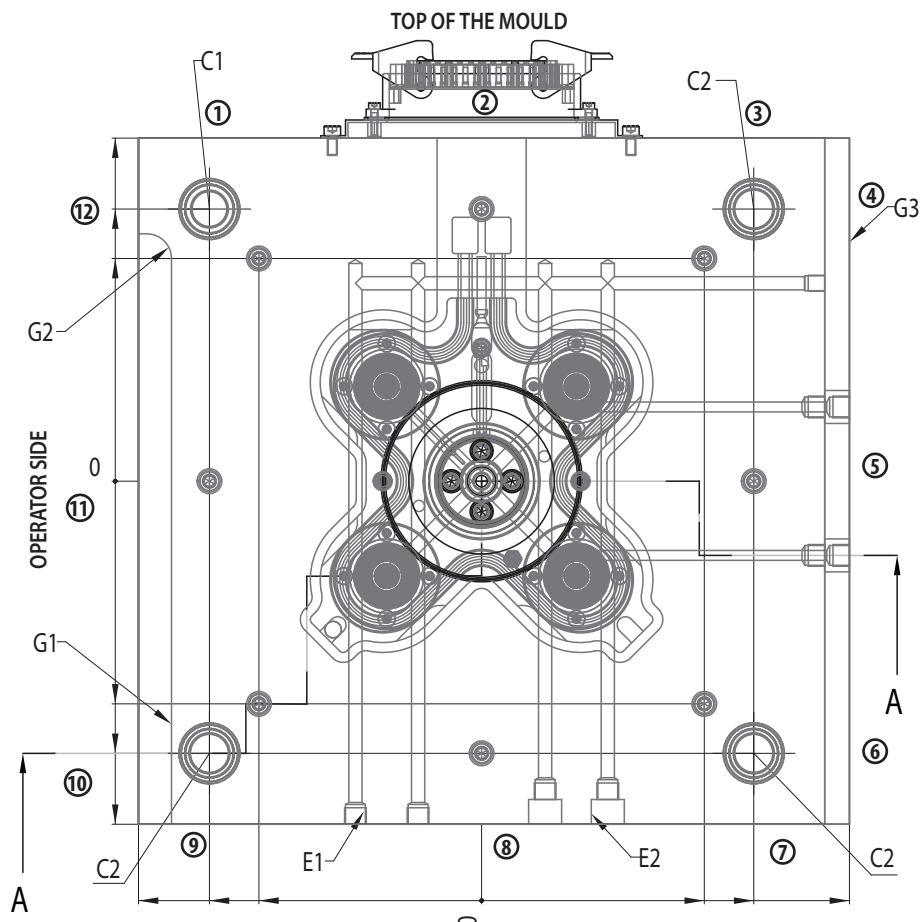
(ONLY NOZZLES F \varnothing 16-24)

☐ YES

☐ NO



SECTION A-A



NOTE: The represented drawing is "view from injection bushing/nozzle press".

Customer technical specs.

NOTE